

A close-up, low-angle shot of a mechanic working on the underside of a vehicle. The mechanic is wearing a dark t-shirt and silver work gloves, and is focused on a task. The background is dark, highlighting the metallic components of the car's chassis and suspension.

AMSOIL

The First in Synthetics®

PRODUCT CATALOG

The Leader in Automotive & Diesel Performance Products

Legendary Performance.



AMSOIL Signature Series Synthetic Motor Oil represents the pinnacle of lubrication science. It is the result of over 40 years of synthetic lubricant engineering. Signature Series brings not only industry-leading performance, but top value as well; its extended-drain performance delivers guaranteed protection for up to 25,000 miles, 700 hours of operation or one year, whichever comes first. AMSOIL Signature Series Synthetic Motor Oil offers a rare combination of performance and value.

- **Engineered** to outperform conventional petroleum oils.
- **Designed** to reduce friction, heat and wear for maximum power, performance and fuel efficiency.
- **Resists** high-temperature burn-off, chemical breakdown and sludging – keeps engines clean.
- **Outstanding** low-temperature fluidity for fast, dependable winter starts and immediate startup protection.
- **Exceeds** the most demanding worldwide performance standards and meets warranty requirements for domestic and imported passenger car engines, both turbocharged and non-turbocharged.

*All trademarked images are the property of their respective owners and may be registered marks in some countries. There is no affiliation or endorsement claim, express or implied, made by their use. AMSOIL products are formulated to meet or exceed the performance requirements set forth by the manufacturers of all applications shown here.

AMSOIL Signature Series



Rapture Challenger, Downforce Motorsports Dodge is a registered trademark of FCA US LLC. / AMSOIL INC. is not affiliated with FCA US LLC.



- **0W-20 (ASM)**
API Service SN (Resource Conserving), SM... • ILSAC GF-5, 4... • GM dexos1™
- **5W-20 (ALM)**
API Service SN (Resource Conserving), SM... • ILSAC GF-5, 4... • GM dexos1™
- **0W-30 (AZO)**
API Service SN (Resource Conserving), SM... • ILSAC GF-5, 4... • GM dexos1™
- **5W-30 (ASL)**
API Service SN (Resource Conserving), SM... • ILSAC GF-5, 4... • GM dexos1™

- **10W-30 (ATM)**
API Service SN (Resource Conserving), SM... • ILSAC GF-5, 4...
- **0W-40 (AZF)**
API Service SN, SM... • Chrysler MS-12633, MS-10725, MS-10850; Nissan GT-R®
- **5W-50 (AMR)**
API Service SN, SM... • Ford WSS-M2C931-C (Mustang)

* Fortified with detergents that exceed dexos1™ sulfated ash specifications

SYNTHETIC MOTOR OIL

XL

EXTENDED LIFE

Delivering extra engine protection and performance with the convenience of twice-per-year oil changes.



XL Synthetic Motor Oil

Formulated to last longer in service than conventional motor oils. Extended-drain boost technology maintains maximum wear protection for up to 10,000-mile/six-month drain intervals, or longer when recommended in owners' manuals or indicated by oil life monitoring systems. Save time, money and effort.

● **0W-20 (XLZ)**

API Service SN (Resource Conserving), SM... • ILSAC GF-5, 4... • GM dexos1™

○ **5W-20 (XLM)**

API Service SN (Resource Conserving), SM... • ILSAC GF-5, 4... • GM dexos1™

● **5W-30 (XLF)**

API Service SN (Resource Conserving), SM... • ILSAC GF-5, 4... • GM dexos1™

● **10W-30 (XLT)**

API Service SN (Resource Conserving), SM... • ILSAC GF-5, 4...

● **10W-40 (XLO)**

API Service SN, SM...

* Fortified with detergents that exceed dexos1™ sulfated ash specifications

*All trademarked images are the property of their respective owners and may be registered marks in some countries. There is no affiliation or endorsement claim, express or implied, made by their use. AMSOIL products are formulated to meet or exceed the performance requirements set forth by the manufacturers of all applications shown here.

SYNTHETIC MOTOR OIL



Delivering excellent engine protection and performance for vehicle manufacturer-recommended oil change intervals.



OE Synthetic Motor Oil

Specially formulated for the longer oil change intervals recommended by vehicle manufacturers today. Advanced synthetic technology resists chemical breakdown for maximum wear protection (and peace of mind) well beyond the traditional 3,000-mile oil change interval.

- **0W-20 (OEZ)**
API Service SN (Resource Conserving), SM...
• ILSAC GF-5, 4... • GM dexos1™
- **5W-20 (OEM)**
API Service SN (Resource Conserving), SM...
• ILSAC GF-5, 4... • GM dexos1™

- **5W-30 (OEF)**
API Service SN (Resource Conserving), SM...
• ILSAC GF-5, 4... • GM dexos1™
- **10W-30 (OET)**
API Service SN (Resource Conserving), SM...
• ILSAC GF-5, 4...

Tough-to-reach fill hole?

Order a flexible pour spout with your oil to make the job easier. Fits quarts and gallons.

STOCK#
G1230



BUILD IT.



Assembly Lube (EAL)

Formulated to cling to engine parts and provide exceptional wear protection while inhibiting rust and corrosion in newly built or rebuilt four-stroke engines. Designed to dissolve in oil, helping eliminate oil port clogging and deposit formation.

Break-In Oil (BRK)

Formulated without friction modifiers to allow for quick and efficient piston ring seating in new and rebuilt high-performance and racing engines. Contains anti-wear additives to protect cam lobes, lifters and rockers during the critical break-in period when wear rates are highest, while increased film strength protects rod and main bearings from damage.

CRUISE IT.



Z-ROD® Synthetic Motor Oil

High-zinc, high-phosphorus formulation engineered specifically for classic cars and performance vehicles. Provides extra protection for flat-tappet cams, lifters, rockers and other areas susceptible to wear. Unique blend of rust and corrosion inhibitors ensures maximum protection during long-term storage.

- **10W-30 (ZRT)**
API SL, SJ...
- **20W-50 (ZRF)**
API SL, SJ...

RACE IT.



DOMINATOR® Synthetic Racing Oil

Provides superior protection and performance for high-rpm, high-temperature racing and high-performance applications. Shear-stable formulation to protect critical engine components for the duration of the race. Effectively reduces friction for maximum power and cooler engine temperatures, resulting in improved lap times and longer-lasting equipment.

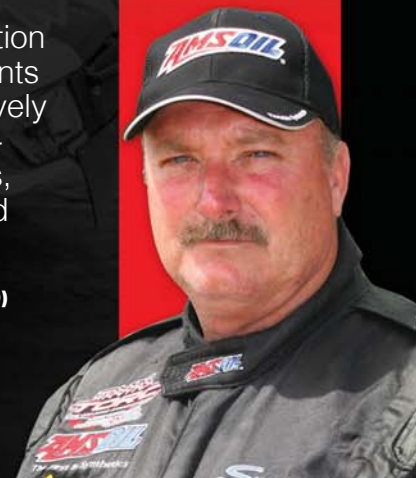
- **5W-20 (RD20)**
- **10W-30 (RD30)**
- **15W-50 (RD50)**
- **SAE 60 (RD60)**



PRODUCTS THE PROS USE

"It's not uncommon for us to see engine temps over 300°. There's no other oil I'd trust on race day."

Scott Douglas
11 World Championships



Premium Protection Synthetic Motor Oil

Formulated for use in gasoline engines and on- and off-road diesel engines not equipped with diesel particulate filters (DPFs). Offers excellent wear protection. Ideal for applications where the extra protection of a high-zinc formula is desired, including classic cars and motor homes. Excellent for flat-tappet, high-performance, heavy-duty and high-mileage applications.

10W-40 (AMO)

API Service SL, SJ, ..., CF, CI-4+ • JASO MA (motorcycle wet clutch) • ISO-L-EMA

20W-50 (ARO)

API Service SL, SJ, ..., CF, CI-4+ • JASO MA (motorcycle wet clutch) • ISO-L-EMA



PREMIUM PROTECTION FOR EUROPEAN VEHICLES

SAPS stands for sulfated ash, phosphorus and sulfur, which comprise a significant part of a motor oil's additive content. Because the vehicle emissions systems and aftertreatment devices of some European vehicles are sensitive to the SAPS content of oil, it is important to use an oil that meets the proper specification to ensure optimum protection and performance.

European Car Formula Synthetic Motor Oil

Specially formulated for the lubrication needs of European gasoline and diesel cars and light trucks. Blended with advanced AMSOIL synthetic base stocks, premium additives and broad viscosity ratings, allowing motorists to take advantage of the maximum extended drain intervals recommended by European automakers while providing outstanding protection and performance.

5W-30 (AEL) – LOW-SAPS

VW 504.00/507.00 • MB 229.51 • BMW LL-04 • Porsche C30

5W-40 (AFL) – MID-SAPS

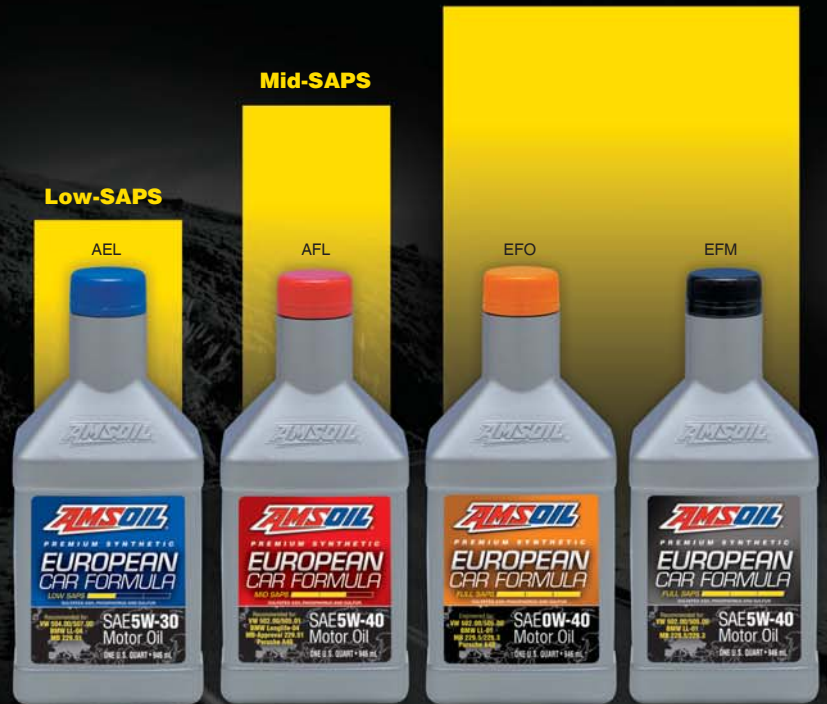
Manufacturer Approvals: BMW Longlife-04 • MB-Approval 229.51 • Porsche A40
Recommended For: ACEA C3 • API SN/SM/CF... • Chrysler MS-10850 (supersedes MS-10898) • Ford WSS-M2C917-A • GM dexos2™ (supersedes LL-A-025 and LL-B-025) • Renault RN0700/RN0710 • Volkswagen 502.00/505.01

0W-40 (EFO) – FULL-SAPS

ACEA A3/B3, A3/B4 • API SN/SM... • BMW LL-01 • MB 229.3/229.5 • Porsche A40 • Renault 0710, 0700 • VW 502.00/505.00

5W-40 (EFM) – FULL-SAPS

ACEA A3/B3, A3/B4 • API SN/SM... • BMW LL-01 • MB 229.3/229.5 • Porsche A40 • Renault 0710, 0700 • VW 502.00/505.00



DESIGNED FOR THE SPECIFIC DEMANDS OF EUROPEAN GAS AND DIESEL ENGINES.

- Outstanding All-Season Performance
- Engineered for Maximum Fuel Economy
- Enhanced Turbocharger Protection
- Low-, Mid- and Full-SAPS Formulations

RIDE HARD. RUN COOL.®

OFFICIAL OIL



Synthetic V-Twin Motorcycle Oil



○ 20W-50 (mcv)

API Service SG, SL/CF, CG-4 • JASO MA/MA2 (motorcycle wet clutch) • ISO-L-EMA2

Recommended for use in Harley-Davidson*, Buell*, Ducati*, Aprilia*, BMW* and other motorcycle engines. Superior synthetic formulation provides long service life and maximum protection against engine wear. Superior shear stability provides outstanding protection for high-performance engines, transmissions and primary chaincases. No friction modifiers. Wet-clutch compatible.

○ SAE 60 (mcs)

API Service SG, SL/CF, GL-1 • JASO MA/MA2 (motorcycle wet clutch) • ISO-L-EMA2

Recommended for use in Harley-Davidson and big-bore motorcycles that require a 60-weight oil. Superior synthetic formulation provides long service life and maximum protection against engine wear. Superior shear stability provides outstanding protection for high-performance engines and transmissions. No friction modifiers. Wet-clutch compatible.

● 20W-40 (mvi)

API SM • JASO MA

Recommended for use in Victory* and model-year 2013 and newer Indian* motorcycles. Superior synthetic formulation provides long service life and maximum protection against engine wear. Superior shear

stability provides outstanding protection for high-performance engines and transmissions. Wet-clutch compatible. First full-synthetic alternative to manufacturer-branded semi-synthetic oils.

● V-Twin Transmission Fluid (mvt)

Purpose-built for bikers who prefer a dedicated transmission fluid over a multi-purpose lubricant. Durable formulation and extreme-pressure additives protect against gear and bearing wear. Finely tuned viscometrics and frictional properties provide smooth shifts, helping riders avoid missed shifts. Helps eliminate loud clunks and gear noise.

● V-Twin Primary Fluid (mvp)

Purpose-built for bikers who prefer a dedicated primary chaincase lubricant over a multi-purpose lubricant. Balanced additive system provides consistent clutch performance and feel. Helps riders easily find neutral and promotes smooth acceleration. Superior load-holding capacity helps prevent clutch slip for confident takeoffs, helping riders avoid killing their engines. Heavy dose of anti-wear additives protects the gears, chain and compensator bearing from wear. Resists thermal breakdown and reduces drag at low temperatures.

*All trademarked names and images are the property of their respective owners and may be registered marks in some countries. There is no affiliation or endorsement claim, express or implied, made by their use. AMSOIL products are formulated to meet or exceed the performance requirements set forth by the manufacturers of all applications shown/listed here.

The *Pulse* of Performance™



Synthetic Metric Motorcycle Oil



● 10W-40 (MCF)

API Service SG, SL/CF • JASO MA/MA2 (motorcycle wet clutch) • ISO-L-EMA2

Recommended for use in Honda*, Yamaha*, Kawasaki*, Suzuki*, BMW* and other motorcycles where 10W-40 motorcycle oil is required. Superior synthetic formulation provides long service life and maximum protection against engine wear. Superior shear stability provides outstanding protection for high-performance engines and transmissions. No friction modifiers. Wet-clutch compatible.

● 10W-30 (MCT)

API Service SG, SL/CF, CG-4 • JASO MA/MA2 (motorcycle wet clutch) • ISO-L-EMA2

Recommended for use in Honda, Yamaha, Suzuki, Kawasaki and other motorcycles where 10W-30 motorcycle oil is required. Superior synthetic formulation provides long service life and maximum protection against engine wear. Superior shear stability delivers outstanding protection for high-performance engines and transmissions. No friction modifiers. Wet-clutch compatible.

*All trademarked names and images are the property of their respective owners and may be registered marks in some countries. There is no affiliation or endorsement claim, express or implied, made by their use. AMSOIL products are formulated to meet or exceed the performance requirements set forth by the manufacturers of all applications shown/listed here.

OUT-FRONT PERFORMANCE



OFFICIAL OIL



Synthetic Dirt Bike Oil

Friction-modifier-free formulation delivers confidence in clutch feel. Wet-clutch compatible. Advanced synthetic technology for maximum horsepower and wear protection. Superior film strength to protect high-torque transmissions.

● 10W-40 (DB40)

JASO MA · API SG, SJ, SH, SL

Recommended for use in Honda*, Yamaha*, Kawasaki*, Suzuki*, Husqvarna* and other dirt bikes where 10W-40 motorcycle oil is required. Recommended for separate-sump applications, including the Honda CRF* and many two-stroke dirt bikes.

● 10W-50 (DB50)

JASO MA · API SG, SJ, SH, SL

Recommended for use in KTM*, Kawasaki*, Yamaha, Suzuki, Husqvarna and other dirt bikes where 10W-50 motorcycle oil is required. Use in place of Motorex* Cross Power 4T.

● 10W-60 (DB60)

JASO MA · API SG, SJ, SH, SL

Recommended for use in KTM, Husqvarna and other dirt bikes where 10W-60 motorcycle oil is required. Use in place of Motorex Cross Power 4T.

*All trademarked names and images are the property of their respective owners and may be registered marks in some countries. There is no affiliation or endorsement claim, express or implied, made by their use. AMSOIL products are formulated to meet or exceed the performance requirements set forth by the manufacturers of all applications shown/listed here.

Performance Beyond Boundaries



OFFICIAL OIL



NEW!

Synthetic ATV/UTV Oil

Formulated to deliver upgraded performance compared to original equipment manufacturer (OEM) fluids for hard-working, hard-riden ATVs and UTVs. Outstanding severe-service performance allows riders to confidently and safely push their machines to the limit.

● 10W-40 (AUV40)

AMSOIL-engineered for use in ATVs and UTVs that require a 10W-40 motor oil, including Kawasaki*, Suzuki*, Can-Am*, Honda*, Yamaha*, Kubota* and John Deere*. Protects hot, high-revving engines against wear for worry-free operation.

● 5W-50 (AUV50)

AMSOIL-engineered for use in UTVs and ATVs that require a 5W-50 motor oil, including Polaris Ranger*, RZR* and Sportsman*. Protects hot, high-revving engines against wear for worry-free operation.

● Transmission and Differential Fluid (AUDT)

Recommended for ATV and UTV transmissions and front and rear differentials. Boasts outstanding shear stability and resists extreme pressures. Protects heavily loaded, high-torque gears and bearings against wear for worry-free operation.

● Front Drive Fluid (AUFD)

Recommended for use in Polaris ATV and UTV front differentials and hubs calling for Polaris Demand Drive Fluid*. Boasts outstanding shear stability and resists extreme pressures. Protects heavily loaded, high-torque gears and bearings against wear for worry-free operation.

*All trademarked names and images are the property of their respective owners and may be registered marks in some countries. There is no affiliation or endorsement claim, express or implied, made by their use. AMSOIL products are formulated to meet or exceed the performance requirements set forth by the manufacturers of all applications shown/listed here.

FORMULA 4-Stroke®

GBS2960



● Briggs & Stratton Synthetic 4T Racing Oil (GBS2960)

Formulated by AMSOIL specifically for stock and modified small-displacement air-cooled racing engines used in kart, junior drag, quarter midget and other racing applications and recommended for any four-stroke air-cooled competition engine. Tested and validated by Briggs & Stratton* and AMSOIL.

- **Designed** to help racers elicit the most horsepower and longest life from their engines.
- **Resists** the elevated heat common to high-performance racing engines.
- **Reduces** energy loss due to friction.
- **Provides** strong anti-wear properties.
- **Resists** foam.
- **Protects** against the formation of corrosion between races and during longer storage periods.

● Formula 4-Stroke® Power Sports Synthetic Motor Oil (AFF)

Specially formulated to provide serious protection and performance in recreational four-stroke motors, including ATVs and snowmobiles. Broad 0W-40 viscosity rating provides superior protection in both hot and cold temperature extremes.

SAE 0W-40 • API Service SG, SJ, SL/CF • JASO MA/MA2 • ISO-L-EMA2

● Formula 4-Stroke® Synthetic Small Engine Oil (ASE)

Provides superior protection in the hot-temperature, severe-service operating conditions of both gasoline- and diesel-fueled small engines. Exceeds both 10W-30 multi-grade and SAE 30 straight-grade viscosity requirements. Provides excellent all-season protection and performance. Meets the demands of homeowner, commercial and industrial applications, improving productivity and reducing maintenance costs through superior engine protection.

Riding and Push Lawnmowers • Snowblowers • Generators • Pumps • Welders
• Skid-Steers • Compressors • and more

API SL, SJ, SH, SG • API CF, CD • JASO MA/MA2 • ISO-L-EMA2

ASE



AFF





- Outboard
- Inboard
- Inboard/Outboard (I/O)
- Personal Watercraft

Formula 4-Stroke® Marine Synthetic Motor Oil

Formulated specifically for maximum wear protection in four-stroke gasoline-fueled engines used in marine applications. Certified to meet NMMA FC-W Catalyst Compatible performance specifications. Meets “Warranty Certified” status of engine manufacturers.

- **10W-30 (WCT)**
API SM • NMMA FC-W Catalyst Compatible (Registration #FC-00358P)
- **10W-40 (WCF)**
API SM • NMMA FC-W Catalyst Compatible (Registration #FC-00357P)

● Formula 4-Stroke® Synthetic Scooter Oil (ASO)

Formulated to meet the special needs of today’s high-tech air- and water-cooled four-stroke motorized scooters, offering advanced wear protection and friction reduction for longer equipment life and cooler operating temperatures. Friction modifier-free formulation ensures wet-clutch compatibility and smooth clutch operation. Special anti-corrosion additive package provides long-term protection during periods of inactivity and storage.

API SG, SL/CF • JASO MA/MA2 • ISO-L-EMA2



the NEXTBITE



2-STROKE OIL



● HP Marine™ Synthetic 2-Stroke Oil (HPM)

Excellent for all two-stroke outboard motors, personal watercraft and anywhere NMMA TC-W3 and API-TC oils are specified. Recommended for Evinrude* E-TEC* factory-lean setting. Engineered with custom-designed synthetic base stocks to reduce friction and wear. Fortified with MAXDOSE™ system of advanced additives for “super-clean” operation. Low smoke, low odor, low aquatic toxicity. Injector use or 50:1 pre-mix.
TC-W3 / API TC

● DOMINATOR® Synthetic 2-Stroke Racing Oil (TDR)

Complex formulation specially engineered to address the heat, pressure and friction of race-engineered two-cycle engines, both on and off the track. Purpose-built for outstanding film strength and lubricity. Anti-friction, anti-scuff formula for maximum power and exceptional piston protection.
API TC

MAXIMUM PERFORMANCE



● SABER® Professional Synthetic 2-Stroke Oil (ATP)

Withstands high heat and stress to protect handheld power equipment engines against wear and harmful deposits. Smoke-free operation. Can be mixed at conventional mix ratios (32:1, 40:1, 50:1) or the SABER Ratio™ (80:1, 100:1), offering the convenience of one mix ratio for all applications.
ISO-L-EGD / API TC / JASO FD

● Outboard 100:1 Pre-Mix Synthetic 2-Stroke Oil (ATO)

Contains lower-temperature dispersants for water-cooled outboard motors. Recommended for 100:1 mix ratios in normal service (1.3 oz. per gallon).
TC-W3 / API TC



● INTERCEPTOR® Synthetic 2-Stroke Oil (AIT)

Engineered specifically for two-stroke snowmobiles. Anti-scuff/anti-wear formulation provides excellent lubricity and cleanliness properties. Prevents piston skirt scuffing, ring sticking and exhaust power valve sticking. Low-smoke, low-odor formulation ensures riders are not “smoked out.” Injector use or 50:1 pre-mix.
API TC

● Synthetic 2-Stroke Injector Oil (AIO)

Offers the convenience of one formula for the tough conditions of all two-stroke recreational equipment requiring NMMA TC-W3 and API TC two-stroke oil. Effectively minimizes wear and deposits that can damage internal components and significantly shorten engine life. Provides cold-temperature fluidity for easy starts. Fortified with high-temperature detergent and dispersant additives to maintain engine cleanliness. Injector use or 50:1 pre-mix.
TC-W3 / API TC



MAXIMUM RELIABILITY



Meets the performance requirements of Polaris*, Arctic Cat* and Ski-Doo* two-stroke snowmobiles.

EXHAUST SIDE



Piston coating largely intact.

The piston rings earned perfect 10 merit ratings, demonstrating no ring sticking and excellent performance.

The piston skirts exhibited 0.00% scuffing, proving INTERCEPTOR's outstanding friction-reduction capabilities.

Complete results at amsoil.com/proof

SEVERE-DUTY DYNO RESULTS

INTERCEPTOR® Synthetic 2-Stroke Oil was installed in a 2012 Ski-Doo Renegade X* snowmobile equipped with a Rotax* E-TEC 800R engine. Following a 50-hour severe-duty dyno session designed to simulate a full season of real-world conditions, the engine was disassembled and rated for wear and deposits by a calibrated ASTM rater. Results prove INTERCEPTOR virtually eliminated wear and deposits throughout the entire engine.

*All trademarked names are the property of their respective owners and may be registered marks in some countries. There is no affiliation or endorsement claim, express or implied, made by their use.

TCC



● Synthetic Chaincase & Gear Oil (TCC)

Provides superior protection and performance for enclosed chains. Ideal for snowmobiles, ATVs and general equipment. Extreme-pressure additives provide extra wear protection. Extends chain life, repels water and inhibits rust, oxidation and foam. Superior low-temperature starting, performance and protection.

Shock Therapy® Suspension Fluid

Formulated for maximum stability and performance in high-performance fork and shock applications. Effectively controls friction and heat and significantly reduces wear and scuffing. Viscosity remains constant and foam and aeration are kept to a minimum, limiting shock fade and inconsistent dampening. Offers superior performance in temperature extremes.

● Lightweight #5 (STL)

AMSOIL STL #5 is recommended for applications that demand quick rebounds under extreme temperatures.

● Medium #10 (STM)

AMSOIL STM #10 is recommended for applications that require more dampening and slower rebounds.

STL



STM



Premium Synthetic Diesel Oil

The premium choice for model-year 2007 and newer diesel engines requiring API CJ-4 emission quality oil standards. Also recommended for pre-2007 diesel engines. Incredibly shear-stable to withstand the stress of heat, soot and acids and help prevent deposits, wear and corrosion.

Broad viscosity range offers superior protection over a wide temperature range. Effectively reduces emissions by resisting oil consumption, while improving fuel efficiency. Recommended for up to three times the original equipment manufacturer's drain interval recommendation in diesel applications, not to exceed 50,000 miles/600 hours or one year, whichever comes first.* Recommended for up to two times the original equipment manufacturer's drain interval recommendation in gasoline applications, not to exceed 15,000 miles or one year, whichever comes first. Compatible with all exhaust treatment devices and vehicles equipped with turbochargers. Designed to extend the service life of particulate filters.

Due to fuel dilution issues, extended drain intervals are not recommended for 2007-2009 Caterpillar C13 and C15 on-highway engines or 2007-present Dodge*, Ford* and GM* LMM light-duty diesel pickups. See OE Synthetic Diesel Oil on page 16.

DEO



DME



DELIVERING THE POWER OF SYNTHETICS



Lavon Miller,
2014 and 2015 Diesel Power
Challenge Champion, uses
AMSOIL products front to back.

● 5W-40 (DEO)

API licensed CJ-4, CI-4+, CF, SN, SM • ACEA E7, E9 • Mack EO-O • DDC 93K218 • Caterpillar ECF-3, ECF-2, ECF-1-a • Cummins CES 20081 • Volvo VDS-4, VDS-3 • MB 228.31 • MS 10902 • MTU Type I, II, 2.1 • MAN 3275, 3575 • JASO DH-2 • Global DHD-1 • Renault RLD-3 • Ford WSS-M2C171E

● 15W-40 (DME)

API CJ-4, CI-4+, CF, SN, SM • ACEA E7, E9 • Mack EO-O • DDC 93K218 • Caterpillar ECF-3, ECF-2, ECF-1-a • Cummins CES 20081 • Volvo VDS-4, VDS-3 • MB 228.31 • MS 10902 • MTU Type I, II, 2.1 • MAN 3275, 3575 • JASO DH-2 • Global DHD-1 • Renault RLD-3

*All trademarked names and images are the property of their respective owners and may be registered marks in some countries. There is no affiliation or endorsement claim, express or implied, made by their use. AMSOIL products are formulated to meet or exceed the performance requirements set forth by the manufacturers of all applications shown/listed here.



OED

OE Synthetic Diesel Oil

Provides excellent protection and performance in both on- and off-road diesel engines for the original equipment manufacturer's recommended drain interval. Suitable for both modern and older diesel applications requiring API CJ-4 specifications. Exceeds the higher performance demands of modern engines and withstands the stress of heat, soot and acids to help prevent deposits, wear and corrosion. Developed to address fuel dilution issues with 2007 to present Dodge*, Ford* and GM* LMM light-duty diesel pickups.

- **15W-40 (OED)**

API licensed CJ-4/CJ-4+/CF/SN/SM • ACEA E9-08, E7-08 • DDC 93K218 • Cummins CES 20081 • MB 228.31 • CAT ECF-3, ECF-2, ECF-1-a • Mack EO-O • Volvo VDS-4, VDS-3 • MAN 3275, 3575 • Renault RLD-3 • MTU Type I, II, 2.1

- **10W-30 (OEC)**

API licensed CJ-4/CJ-4+/CF/SN/SM • ACEA E9-08, E7-08 • Cummins CES 20081 • MB 228.31 • CAT ECF-3, ECF-2, ECF-1-a • Mack EO-O • Volvo VDS-4, VDS-3 • MAN 3275, 3575 • Renault RLD-3 • MTU Type I, II, 2.1

- **Series 3000 5W-30 Synthetic Heavy Duty Diesel Oil (HDD)**

Engineered for on- and off-road diesel engines not equipped with diesel particulate filters (DPF). Also for all gasoline engines recommending API SL specifications, including turbocharged vehicles. Delivers better wear protection than other popular diesel oils and effectively reduces fuel consumption. Ideal for exhaust gas recirculation (EGR) engines. **Note:** For 2007 and newer on-road diesel vehicles, see Premium Synthetic Diesel Oil on pg. 15 and OE Synthetic Diesel Oil on pg. 16.

API CI-4+/CI-4/CH-4/CF/CF-2/SL/SJ • Global DHD-1 • ACEA A3/B3, E2, E3, E5, E7 • JASO DH-1 • Mack EO-M, EO-N • DDC 93K214 • MAN 271/3275 • MTU Type II • Caterpillar ECF-1-a, ECF-2 • Cummins CES 20076, 20077, 20078 • Volvo VDS-3, VDS-2 • MB 228.1, 228.3, 229.1

- **15W-40 Synthetic Heavy Duty Diesel and Marine Oil (AME)**

Engineered for on- and off-road diesel engines not equipped with diesel particulate filters (DPF). High 12 TBN controls acids from combustion blow-by and exhaust gas recirculation (EGR). High levels of detergency and dispersancy additives control soot thickening, oxidation and wear. Provides up to three times the original equipment manufacturer's drain interval recommendation in diesel applications, not to exceed 50,000 miles/600 hours or one year, whichever comes first. **Note:** For 2007 and newer on-road diesel vehicles, see Premium Synthetic Diesel Oil on pg. 15 and OE Synthetic Diesel Oil on pg. 16.

API CI-4+/CI-4/CH-4/CF/CF-2/SL/SJ • Global DHD-1 • ACEA A3/B3, E2, E3, E5, E7 • JASO DH-1 • Mack EO-M, EO-N • DDC 93K214 • Caterpillar ECF-1-a, ECF-2 • Cummins CES 20076, 20077, 20078 • Volvo VDS-3, VDS-2 • MB 228.1, 228.3, 229.1 • MAN 271, 3275 • MTU Type II

- **10W-30/SAE 30 Synthetic Heavy Duty Diesel Oil (ACD)**

Exceeds both 10W-30 multi-grade and SAE 30 straight-grade viscosity requirements. Engineered for on- and off-road diesel engines not equipped with diesel particulate filters (DPF). Also recommended for gasoline engines requiring API SL or previous specifications. Excellent for heavy equipment and personal vehicles. See the AMSOIL Product Information and Drain Interval Chart (G2281) for more information. **Note:** For 2007 and newer on-road diesel vehicles, see Premium Synthetic Diesel Oil on pg. 15 and OE Synthetic Diesel Oil on pg. 16.

API CI-4+/CH-4/CF-2/CF/SL • Global DHD-1 • ACEA A3/B3, E3, E5 • DDC • Caterpillar ECF-1-a, ECF-2 • Cummins CES 20076, 20077, 20078 • Volvo VDS-3, VDS-2 • MB 228.1, 228.3, 229.1 • MAN 271, 3275 • MTU Type II • Ford WSS-M2C921-A



OEC



AME



HDD

ADVANCED
FUEL EFFICIENT FORMULA



ACD

Oil Analysis

AMSOIL and its subsidiary OIL ANALYZERS INC.® provide state-of-the-art oil analysis service, allowing customers to monitor engine condition and maximize oil drain intervals. Customers receive detailed analysis reports via fax, email and online reporting. Expert consultation of oil condition is easily accessible by phone (877-458-3315) or email (info@oaitesting.com). Coolant and diesel fuel analysis is also available. For more information, see www.oaitesting.com.

Oil Suction
Pump
(G1206)



Oil Analyzers INC.

Signature Series Synthetic Automatic Transmission Fluid

Provides reserve protection in fleet vehicles, heavy-duty pickups, work trucks and other severe-service applications that quickly break down other lubricants. Promotes maximum transmission performance and life by protecting against formation of harmful sludge in hot-running automatic transmissions. Retains viscosity in severe service to guard against wear to gears, clutch plates and other critical components. Outstanding cold-flow and frictional properties. Follow the vehicle manufacturer's normal-service drain interval in normal service or double the vehicle manufacturer's severe-service drain interval in severe service. Fuel-Efficient Synthetic Automatic Transmission Fluid is engineered to exceed the requirements of GM*, Ford*, Toyota* and other manufacturers where low-viscosity oil is required.

Handle More Heat With Confidence

Standard Severe Service

AMSOIL Severe Service

RESERVE PROTECTION

Change Interval - Miles



● Multi-Vehicle (ATF)

Ford MERCON®, MERCON® V, ESP-M2C166-H • GM DEXRON® III • Chrysler ATF+4®, MOPAR® AS68RC • Allison C-4, TES-389 • Audi G 052 162, G 052 990, G 055 025 • BMW 7045E, LA 2634, LT 71141 • Honda ATF-Z1 (not CVT) • Hyundai SP-II and SP-III • Idemitsu K17 • JWS 3309, 3314, 3317 • Kia SP-II and SP-III, ATF Red-1 • MAN 339F, 339 V1, 339 V2, 339 Z1, Z2 & Z3 • Mazda ATF-M III, ATF-MV, ATF-FZ • Mercedes Benz 236.1, 236.2, 236.3, 236.5, 236.6, 236.7, 236.9, 236.10, 236.11, 236.81 • Mitsubishi SP-II and SP-III • Nissan Matic-D, Matic-J, Matic-K • Shell 3403, LA 2634 • Subaru ATF, ATF-HP • Suzuki 3314 & 3317 • Texaco ETL-7045E, ETL-8072B, N402 • Toyota Type T-III and T-IV • Voith 55.6335.XX (G607), 55.6336.XX (G1363) • Volvo 97340, 97341 • Volkswagen G 052 162, G 052 990, G 055 025 • ZF TE-ML 03D, 04D, 05L, 09, 11B, 14A, 14B, 14C, 16L, 17C • JASO 1-A

Note: Not for use with belt- or chain-type CVT or Ford Type F applications.

● Fuel-Efficient (ATL)

Ford MERCON® LV, SP • GM DEXRON® VI • Aisin-Warner AW-1 • Audi G 055 005, G 055 162, G 060 162 • BMW 83 22 0 142 516, 83 22 2 152 426 • Honda DW-1® • Hyundai/Kia SP-IV, SPH-IV, SPH-IV-RR • JWS 3324 • Chrysler Mopar® PIN 68157995A (ZF 8&9 speed ATF) • Mitsubishi SP-IV, ATF J2 • Nissan Matic-S • Saab 93 165 147 • Shell M-1375.4, M-1375.5, M-1375.6, M-L 12108 • Toyota WS • Volkswagen G 055 005, G 055 162, G 060 162 • JASO 1-A • Mercedes Benz 236.12, 236.14 • Volvo 97342

Note: Not for use with belt- or chain-type CVT applications.



OE Synthetic Automatic Transmission Fluid

Provides outstanding protection for passenger-car/light-truck transmissions throughout original equipment manufacturer (OEM)-recommended drain intervals. Resists wear to the transmission's valve body, gears, clutch plates and other vital parts. Guards against the harmful effects of thermal breakdown, resisting varnish formation that can stick valves and threaten transmission performance and life. Resists thickening and flows quickly for fast, reliable shifts during cold starts and maximum fuel efficiency. OE Fuel-Efficient Synthetic Automatic Transmission Fluid is engineered to exceed the requirements of GM, Ford, Toyota and other OEMs where low-viscosity oil is required.

● Multi-Vehicle (OTF)

Ford MERCON®, MERCON® V, ESP-M2C166-H • GM DEXRON® III • Chrysler MOPAR® AS68RC • Allison C-4, TES-389 • Audi G 052 162, G 052 990, G 055 025 • BMW 7045E, LA 2634, LT 71141 • Honda ATF-Z1 (not CVT) • Hyundai SP-II and SP-III • Idemitsu K17 • JWS 3309, 3314, 3317 • Kia SP-II and SP-III, ATF Red-1 • MAN 339F, 339 V1, 339 V2, 339 Z1 & 339 Z2 • Mazda ATF-M III, ATF-MV, ATF-FZ • Mercedes Benz 236.1, 236.2, 236.3, 236.5, 236.6, 236.7, 236.9, 236.10, 236.11, 236.81 • Mitsubishi SP-II and SP-III • Nissan Matic-D, Matic-J, Matic-K • Shell 3403, LA 2634 • Subaru ATF, ATF-HP • Suzuki 3314 & 3317 • Texaco ETL-7045E, ETL-8072B, N402 • Toyota Type T-III and T-IV • Voith 55.6335.XX (G607), 55.6336.XX (G1363) • Volvo 97340, 97341 • Volkswagen G 052 162, G 052 990, G 055 025 • ZF TE-ML 03D, 04D, 05L, 09, 11B, 14A, 14B, 16L, 17C • JASO 1-A

Note: Not for use with belt- or chain-type CVT or Ford Type F applications. AMSOIL warrants the use of this product for Chrysler ATF+4* applications above -38°F. Product does not meet the cold temperature requirement of ATF+4 at -40°F. For warranty information, visit www.amsoil.com/warranty.aspx.

● Fuel-Efficient (OTL)

Ford MERCON® LV • GM DEXRON® VI • Aisin-Warner AW-1 • Audi G 055 005, G 055 162, G 060 162 • BMW 83 22 0 142 516, 83 22 2 152 426 • Honda DW-1® • Hyundai/Kia SP-IV, SPH-IV, SPH-IV-RR • JWS 3324 • Chrysler Mopar® PIN 68157995A (ZF 8&9 speed ATF) • Mitsubishi SP-IV, ATF J2 • Nissan Matic-S • Saab 93 165 147 • Shell M-1375.4, M-1375.5, M-1375.6, M-L 12108 • Toyota WS • Volkswagen G 055 005, G 055 162, G 060 162 • JASO 1-A • Mercedes Benz 236.12, 236.14 • Volvo 97342

Note: Not for use with belt- or chain-type CVT applications.



● Synthetic CVT Fluid

Provides outstanding protection and performance for belt- and chain-type continuously variable transmissions (CVT) throughout vehicle manufacturer-recommended drain intervals. Exceptional metal-to-metal frictional properties help prevent belt and chain slipping. Resists wear and oxidation that threaten transmission performance and life. Superior wet-clutch performance for outstanding anti-shudder durability and reduced noise and vibration.

Recommended for belt- and chain-type CVTs requiring the following: Audi/VW TL 52180, G 052 180, G 052 516 • BMW 8322 0 136 376, 8322 0 429 154, EZL 799A • Daihatsu Amix CVTF-DC, CVTF-DFE • Dodge/Jeep NS-2, CVTF+4®, MOPAR® CVT 4 • Ford CVT23, CFT30, WSS-M2C933-A, Motorcraft® XT-7-QCFT, MERCON® C • GM/Saturn DEX-CVT, CVTF I-Green2 • Honda HMMF, HCF-2 • Hyundai/Kia SP-CVT 1 • Mazda CVTF 3320 • Mercedes Benz CVT28, 236.20 • Mini Cooper EZL 799A, ZF CVT V1 • Mitsubishi DiaQueen CVTF-J1, CVTF-J4 • Nissan NS-1, NS-2, NS-3 • Punch EZL 799A • Shell Green 1V • Subaru e-CVTF, i-CVTF, Lineartronic® CVTF, K0425Y0710, CV-30 • Suzuki CVTF 3320, TC, NS-2, CVTF Green1, CVTF Green 2 • Toyota/Lexus TC, FE



MTG



○ **Synthetic Manual Transmission and Transaxle Gear Lube (MTG)**

Provides improved internal component protection. Formulated with extreme-pressure additives and advanced frictional qualities that provide smooth shifts while protecting gears, bearings and seals. Non-corrosive to yellow metals. Recommended for manual transmissions and transaxles that require 75W-85, 75W-90 or 80W-90 viscosities.

75W-90 • API GL-4

MTF



○ **Synthetic Synchronesh Transmission Fluid (MTF)**

Specifically designed for manual transmissions and transaxles with synchronesh systems that require light viscosity, non-extreme-pressure fortified oil. Advanced additive technology provides smooth shifting without grinding or bump shifting while providing excellent gear and bearing protection. Outperforms motor oils in manual transmissions and provides excellent performance in extreme temperatures from -40° F to 300° F. Outstanding anti-wear and anti-foam properties and non-corrosive to yellow metals. Not for use in engines or wet clutches.

ART



● **Super Shift® Racing Transmission Fluid (ART)**

Specially formulated for high-horsepower, high-torque conditions. Designed to provide quick, solid shifts and prevent automatic transmissions from slipping, helping racers improve on elapsed times. Delivers exceptional friction reduction and reduced wear so clutch plates and transmissions last longer. Provides maximum torque transfer and brake power while resisting oxidation and thermal breakdown.

Allison C-4 • Ford Type F

ATD



● **Torque-Drive® Synthetic Heavy-Duty Automatic Transmission Fluid (ATD)**

Engineered to eliminate the deficiencies common to conventional petroleum ATFs, AMSOIL Torque-Drive provides superior performance and protection against thermal and oxidative degradation, sludge and varnish formation and viscosity shear down. Ideal for heavy equipment transmissions.

AMSOIL recommends Torque-Drive for use in all automatic transmissions requiring any of the following specifications: Allison C-4, TES-295, TES-389; Ford MERCON® V; GM DEXRON® III; MAN 339 Type V-1, 339 Type V-2, 339 Type Z-1, 339 Type Z-2, 339 Type Z-3, 339F; MB 236.91, 236.10; Voith 55.6335, 55.6336; Volvo 97340, 97341; ZF TE-ML 03D, TE-ML 04D, TE-ML 14A, TE-ML 14B, TE-ML 14C, TE-ML 17C, TE-ML 20B, TE-ML 20C

ATH



● **Synthetic Tractor/Hydraulic Transmission Oil (ATH)**

Formulated for combinations of transmissions, hydraulic systems, final drives, power take-off systems and wet brakes, including hydrostatic lawn mower transmissions. Exceeds the most demanding all-weather specifications of both Ford New Holland FNHA-2-C-200 & 2-C-201* and John Deere J20C & J20D*, as well as most other tractor hydraulic/ transmissions, eliminating the need for seasonal oil changes.





FTF

SAE 50 Long-Life Synthetic Transmission Oil (FTF)

Specially formulated to meet the demanding requirements of manual transmissions found in high-torque, heavy-duty line-haul trucks and other commercial applications. Its synthetic base stock and premium additives help reduce gear and bearing wear, improve shifting and extend transmission life throughout drain intervals of up to 500,000 miles/five years.

Eaton PS-164 Rev. 7 • API GL-1 and MT-1 • Navistar/International TMS 6816 • Mack TO-A Plus • ZF Freedomline • Meritor 0-81 • Rockwell/Eaton/Fuller CD-50 (PS-081)



CTG

Synthetic Powershift Transmission Fluid

Specifically formulated for heavy-duty powershift transmissions. Provides outstanding friction performance for enhanced clutch engagement. Formulated to prevent slippage and glazing. Shear-stable and anti-wear fortified. Protects gears and bearings. Resists high-temperature oxidation, varnish and sludge formation. Superb cold-flow properties. Extended drain interval capable. Recommended for heavy-duty service found in commercial and earth-moving applications as well as lighter-duty transmissions requiring the listed specifications. SAE 30 & 50 are also excellent for manual transmissions.



CTJ



CTL

SAE 10W (CTG)

CAT TO-4 • Allison C-4 • Komatsu KES 07.868.1

SAE 30 (CTJ)

CAT TO-4 • Allison C-4 • Komatsu KES 07.868.1

SAE 50 (CTL)

CAT TO-4 • CD-50 • Komatsu KES 07.868.1

Severe Gear® Synthetic EP Gear Lube

Specifically engineered for high-demand applications, including trailer towing, heavy hauling, 4x4 off-road driving, commercial use and racing. Superior lube film strength combined with extra additives protects gears and bearings from scoring and wear. Resists high heat and possesses excellent cold-flow properties. Outperforms all conventional gear oils. Recommended for all types of vehicles such as turbo-diesel pickups, SUVs, autos, trucks, heavy equipment and motor homes. Compatible with most limited-slip differentials.



SVG

SVT

● 75W-90 (svg)

Top fuel efficiency and cold-temperature performance

API GL-5/MT-1 • MIL-PRF-2105E • MACK GO-J • Dana SHAES 234 (Eaton PS-037)

● 75W-110 (svt)

Extra viscosity protection without sacrificing fuel efficiency

API GL-5/MT-1 • MIL-PRF-2105E • Mack GO-J • Dana SHAES 234 (Eaton PS-037)

● 75W-140 (svo)

Maximum viscosity protection for severe-duty applications

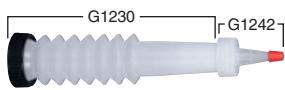
API GL-5/MT-1 • MIL-PRF-2105E • MACK GO-J • Dana SHAES 234 (Eaton PS-037)



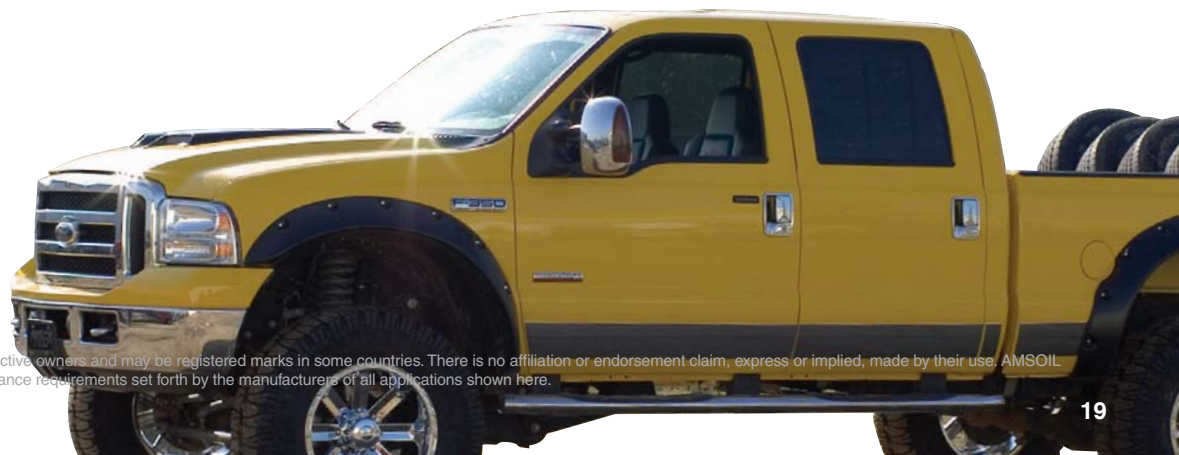
SVO



Gear Lube Hand Pump (G2039)



Flexible Pour Spout (G1230)
Nozzle Dispenser Caps (6) (G1242)





Severe Gear® EP Synthetic Racing Gear Lube

High-viscosity, extreme-pressure gear lube engineered for the demands of severe racing conditions, including off-road truck racing, rock racing, rock crawling, tractor pulling, funny car racing and dragster racing. Protects gears from shock-loading and tire shake. Resists sling-off from G-forces and high speeds. Effectively clings to gears, promoting cooler operating temperatures and extending gear and bearing life.

- **SAE 190 (SRN)**
API GL-5/MT-1
- **SAE 250 (SRT)**
API GL-5/MT-1

Long Life Synthetic Gear Lube

Specifically engineered for extended drain intervals up to 500,000 miles as set by equipment manufacturers for over-the-road trucks. Protects against wear and improves equipment life. Excellent all-season summer and winter performance. Outperforms all conventional gear oils. Also excellent for passenger cars and trucks. Compatible with most limited-slip differentials.

- **75W-90 (FGR)**
API GL-5/MT-1 • MIL-PRF-2105E • MACK GO-J+ • Dana SHAES 256 (Eaton PS-163)
- **80W-140 (FGO)**
API GL-5/MT-1 • MIL-PRF-2105E • MACK GO-J+ • Dana SHAES 256 (Eaton PS-163)



○ 80W-90 Synthetic Gear Lube (AGL)

High-quality replacement for applications specifying SAE 80W-90 conventional gear lube. Synthetic construction provides improved cold-flow properties, high viscosity index, superior heat resistance and excellent wear protection.

API GL-5/MT-1 • MIL-PRF-2105E • MACK GO-J • Dana SHAES 234 (Eaton PS-037)

○ Universal Synthetic Marine Gear Lube (AGM)

Provides true marine gear performance, resists foaming and retains extreme-pressure qualities even when subjected to 10 percent water contamination. For use in outboard lower units, sterndrives, V-drives, bow and tunnel thrusters and marine transmissions requiring an SAE 75W-90 or 80W-90 meeting either GL-4 or GL-5 performance standards.

GL-5, GL-4

OUTSTANDING PROTECTION FOR LOWER UNITS



Slip Lock® Differential Additive (ADA)

Formulated to eliminate gear-housing chatter in cars, trucks and SUVs equipped with limited-slip and positraction differentials. Formulated for use with both synthetic and petroleum gear lubricants and safely replaces manufacturer-recommended friction modifiers. One tube treats differential capacities of two to four quarts.

Note: AMSOIL synthetic gear lubes do not require the use of this additive. However, not all differentials respond the same and if chatter is noticed, the addition of AMSOIL Slip Lock will eliminate it.





Ea® Oil Filters (EaO/Ea15K)

AMSOIL Ea Oil Filters rank among the highest efficiency filters available to the auto/light-truck market, providing a filtering efficiency of 98.7 percent at 20 microns. Featuring advanced full-synthetic technology, Ea Oil Filters provide greater efficiency, capacity and durability than cellulose filters, extending engine and filter life and reducing engine wear. When used in conjunction with AMSOIL synthetic motor oil, AMSOIL Ea Oil Filters are guaranteed for extended service life:

- Ea Filters designated with product code Ea15K are recommended for 15,000 miles/one year, whichever comes first, in normal or severe service.
- Ea Filters designated with product code EaO are recommended for 25,000 miles/one year, whichever comes first, in normal service or 15,000 miles/one year, whichever comes first, in severe service.

Which filter do I need?

Call 1-800-956-5695 (Monday-Friday, 7 a.m. - 5 p.m. Central Time) or contact the AMSOIL Dealer listed on the back of your catalog (if one is listed) to determine the appropriate filter for each application. When AMSOIL Ea Oil Filters are used with a motor oil other than AMSOIL motor oil the filter should be changed according to the vehicle manufacturer recommendation.

More Premium Ea® Filters

AMSOIL offers a variety of specialty Ea oil and air filters constructed with premium synthetic technology. Call 1-715-399-8324 (Monday-Friday, 8 a.m. - 5 p.m. Central Time) for application information.



Ea Heavy-Duty Extended-Life Oil Filters (EaHD)

Provide excellent filtering efficiency and high contaminant capacity for heavy-duty on- and off-road diesel and gasoline applications.



Ea Bypass Filters (EaBP)

High-efficiency bypass filters effectively remove minute dirt particles and soot. Provides an efficiency rating of 98.7 percent at two microns. *Some mechanical ability required for installation.*



Universal Single-Remote Bypass System (BMK21)

Working in conjunction with the engine's full-flow oil filter, the AMSOIL Ea Bypass Filter operates by filtering oil on a "partial-flow" basis. For use with EaBP90, EaBP100 or EaBP110 Bypass Filters.



DUAL-GARD® Bypass System (BMK22)

Links two AMSOIL Bypass Filter elements together for engines with sump capacities over 20 quarts. Allows fast and simple servicing with spin-on elements.



Dual Remote Bypass Systems (BMK23, BMK26, BMK27, BMK28, BMK18)

Versatile system combines full-flow and bypass oil filtration on a single, easy-to-install mount. All installation parts are included.



Heavy-Duty Bypass System (BMK30)

Maximum filtration performance for virtually all heavy-duty diesel applications, including Class 6, 7 and 8 heavy-duty trucks, off-road equipment, buses, generators, marine engines, logging and agricultural equipment.



Ea Universal Air Induction Filters (EaAU)

Fit most popular air intake systems on the market, providing improved cold air intake and excellent efficiency for superior engine protection and performance. Cleanable and remain serviceable for long filter life.



Ea Racing Air Filters (EaAR)

Specially designed for carbureted racing and street rod applications, providing higher dirt-holding capacity, lower pressure drop and greater airflow and efficiency. Cleanable and remain serviceable for long filter life.



Ea Pre-Filters (EaPF)

Constructed of woven mesh and designed to fit over the top of Ea Racing and Air Induction Filters, preventing large particles from sticking to them and blocking airflow. Easily removed and shaken free of debris in seconds. Cleanable and remain serviceable for up to one year.



Ea Motorcycle Oil Filters (EaOM)

Designed for motorcycles, ATVs and four-stroke personal watercraft, snowmobiles and outboard motors, stopping smaller dirt particles, offering less restriction, extending equipment and filter life and improving performance. Fluted for easy removal. Available in black or chrome.

DOMINATOR® Synthetic Racing Grease (GRG)

Ultimate protection for high-speed, high-temperature, extreme-pressure applications. Maximizes power, bearing efficiency and fuel efficiency, while delivering superior wear protection and friction reduction for wheel bearings and chassis components in racing vehicles operated on snow, dirt, water or pavement.

NLGI No. 2, GC/LB



GPOR1

GPOR2



Synthetic Polymeric Off-Road Grease

Formulated to resist impact/pound-out and provide outstanding protection and performance in the extreme environments faced in heavy-duty off-road equipment. Provides exceptional adhesion and cohesion properties, resists water washout and stays in place longer, providing outstanding lubrication over extended service intervals, reducing maintenance costs and extending equipment life.

NLGI No. 1 (GPOR1)

NLGI No. 2 (GPOR2)

Synthetic Polymeric Truck, Chassis and Equipment Grease

Delivers excellent wear protection and performance in the severe-service, extreme-pressure environments faced in medium- and heavy-duty over-the-road trucks and equipment. Clings tenaciously to metal surfaces, staying in place to seal out water and contaminants and provide a protective barrier between metal components. Extended service life reduces the need for frequent re-application (or requires less grease at each servicing), reducing maintenance costs and increasing equipment life.

NLGI No. 1 (GPTR1)

NLGI No. 2 (GPTR2)

GPTR1

GPTR2



GLC3P

GLC



GLCKT

Synthetic Multi-Purpose Grease (GLC)

Reduces friction and wear in high-speed/high-temperature components such as automotive wheel bearings and electric motors. Keeps components running clean and trouble-free for outstanding performance and long life.

NLGI No. 2, GC/LB

Synthetic Water Resistant Grease (GWR)

Resists water washout and corrosion. Maximum protection for boat trailer wheel bearings, outboard motors, ATVs, UTVs and other components frequently exposed to water.

NLGI No. 2, GC/LB

GWR



GWR3P



X-Treme Synthetic Food Grade Grease (GXC)

An ultra-premium lubricant designed for high levels of protection in food and pharmaceutical industry equipment. NSF-approved (formerly USDA H-1) for incidental contact with food. Excellent high-temperature and extreme-pressure protection.

NLGI No. 2

Synthetic Fifth-Wheel Grease (FWG)

Delivers long service life and outstanding protection against wear and corrosion in the heavily-loaded, harsh operating environments specific to fifth-wheel hitches used in trucking and trailer applications.

NLGI No. 2

Arctic Synthetic Grease (GEC)

Provides extreme low-temperature pumpability and superior protection for equipment operating in harsh climates where temperatures drop well below freezing, ensuring superior load and wear protection where conventional greases are ineffective.

NLGI No. 1

GEC

GXC



FWG





Spray Grease (GSP)

Effectively reduces friction and wear, keeping components running clean and trouble-free for outstanding performance and long life. Applies quickly and evenly and is ideal for greasing hard-to-reach equipment, including hinges, springs and other common applications.



Semi-Fluid Synthetic EP Grease (GSP)

Formulated with high-viscosity ISO-460 synthetic base oil and a sophisticated additive package, providing unparalleled protection against wear. Ideal for leaky gear boxes in industrial and fleet applications, centralized lubrication systems and for use in applications that are difficult to service. Primarily used in grease-filled cases where conventional semifluid greases do not provide adequate lubricant life or protection.

NLGI #00

Synthetic High Viscosity Lithium Complex Grease (GVC)

Lithium complex thickened grease blended with premium ISO-320 synthetic base oil. Fully compounded with additives providing EP protection, oxidation resistance and corrosion protection. Excellent for use in heavy-duty industrial and off-road applications where equipment is working under adverse conditions such as exposure to environmental elements, slow, heavily-loaded applications and shock-loading conditions.

NLGI #2



Semi-Synthetic Bar and Chain Oil (ABC)

Clings to metal surfaces better than other oils. Delivers outstanding lubrication and protection.

Synthetic Compressor Oil

Provides outstanding protection and performance in rotary screw, rotary vane, reciprocating and other compressor applications. Compatible with PAO-, ester- and petroleum-based compressor oils. Not compatible with glycol- or silicone-based compressor oils.

ISO 32, SAE 10W (PCH)
ISO 46, SAE 20 (PCI)

ISO 68, SAE 30 (PCJ)
ISO 100, SAE 30/40 (PCK)

SIROCCO® Synthetic Compressor Oil (SEI)

Provides superior protection and performance in rotary screw compressors. Increases operating efficiency, reducing money spent on energy, repair and maintenance costs. Recommended as a direct replacement for PAG compressor oils such as Sullair Sullube 32 and Ingersol Rand SSR Ultra Coolant. Compatible with PAG-, PAO-, ester- and petroleum-based compressor oils. Not recommended for use with silicone base fluids.

ISO 32/46

Synthetic Anti-Wear Hydraulic Oil

Protects hard-working hydraulic systems from the stress of high-pressure, high-load and heavy-duty operations. Remains fluid in cold temperatures for immediate cold-weather flow. Special anti-wear additives and rust inhibitors provide optimum protection to expensive equipment. Provides maximum efficiency for reduced fuel usage and increased production.

ISO 22 (AWG)
ISO 32 (AWH)
ISO 46 (AWI)

Synthetic Multi-Viscosity Hydraulic Oil

Blend of high viscosity index base oils and performance additives provides all-season protection and reliable operation in most types of hydraulic systems. Proven wear resistance and varnish control deliver maximum hydraulic system performance and life. Additionally tailored to promote energy efficiency and foam suppression.

ISO 22 (HVG)
ISO 32 (HVH)
ISO 46 (HVI)
ISO 68 (HVJ)

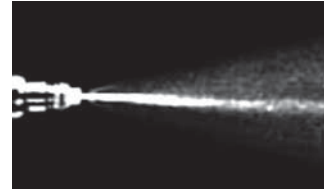




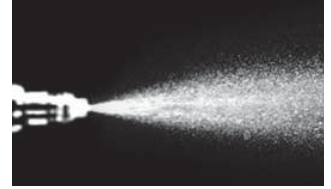
Industry's Most Advanced Formulation Improves Fuel Economy

P.i.® Performance Improver (API)

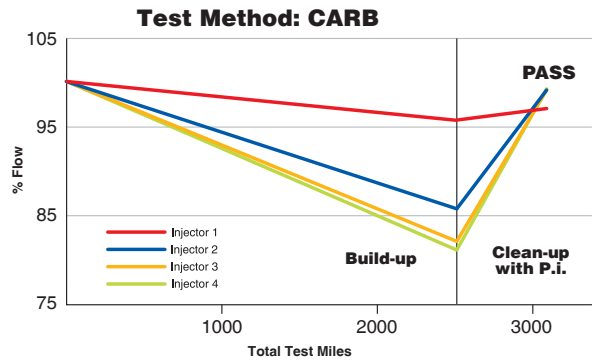
P.i. Performance Improver ranks among the most potent gasoline additives available today. As a concentrated detergent, it is outstanding in cleaning combustion chamber deposits, intake valve deposits and fuel injector deposits, eliminating the need for expensive fuel injector cleaning procedures. It is ideal for use prior to emissions inspections, and it helps maintain peak engine efficiency, fuel economy, power and drivability in newer low mileage engines. In engines with accumulated deposits, P.i. provides improved fuel mileage up to 5.7%, reduced emissions, restored power and performance, reduced need for higher octane fuel, reduced carbon rap and preignition, better drivability and smoother operation after only one tank of gasoline. Excellent for both gasoline direct injected (GDI) and port fuel injected engines. Treat one full tank of gas every 4,000 miles (100 hours of service for marine, stationary and off-road gas-powered engines). One bottle treats one full tank of gas up to 20 gallons.



Injector spray pattern before P.i. treatment.



Injector spray pattern after P.i. treatment.



Two of the four dirty injectors tested were fouled >15% and another was fouled >10%. After one tank of operation on AMSOIL P.i., all injectors returned to >95% flow.



Addresses Ethanol-Related Performance Issues

Quickshot® (AQS)

Formulated to thoroughly clean varnish, gums and insoluble debris in two- and four-stroke gasoline-powered small engines and powersports equipment fuel systems, restoring peak performance. Effectively addresses performance issues related to ethanol, water and dirty pump gas. Stabilizes fuel between uses and during short-term storage periods. See package for treat rates.

Motorcycles • Snowmobiles • Boats • ATVs • Edgers • Tillers • Mowers • Snowblowers • Chainsaws • Generators • Farm & Construction Equipment • and more

Phase separation is when ethanol/water mixtures fall to the bottom of fuel tanks and containers, leading to lean-burn conditions.

Quickshot helps keep water molecules dispersed to prevent phase separation.

Degraded fuel can present a major maintenance issue in motorcycle engines, forming varnish, gum and insoluble debris that clog carburetors, fuel injectors and fuel filters. Carbon buildup can form on the tops of pistons resulting in pre-ignition, rough idling and poor throttle response. Fuel-related problems are only expected to intensify in the coming years as the ethanol content in pump gasoline continues to increase.

AMSOIL Quickshot® (AQS) is a premium fuel additive formulated to thoroughly clean and restore peak performance in motorcycle and powersports equipment fuel systems. It also stabilizes fuel between uses and during short-term storage periods.





Gasoline Stabilizer (AST)

Formulated to keep fuel from deteriorating during storage. Reduces the oxidation process to help prevent varnish and gum buildup in gasoline, which can clog injectors, stick floats and cause poor engine performance. Treat rate is one ounce with every 2.5 gallons of fuel. One bottle treats 40 gallons.



Engine Fogging Oil (FOG)

Superior film retention provides stored equipment with long-term protection against corrosion and dry starts, extending engine life and reducing operating expenses.

DOMINATOR® Octane Boost (AOB)

Improves the performance of all two- and four-stroke gasoline-fueled engines. Increases octane up to four numbers. Maximizes power, reduces engine knock and improves ignition and engine response. Helps fuel burn cleaner and removes carbon deposits. Excellent as a lead substitute at same treat rates in collector automobiles, older off-road equipment, 4x4 off-road vehicles and gasoline racing vehicles. One bottle treats 15 gallons.



Motorcycle Octane Boost (MOB)

Increases octane up to three numbers for maximum power and efficiency in motorcycles. Designed to improve startup performance and eliminate engine ping or knock for increased power at low-rpm operation. Treat rate is 1.3 oz. per gallon of fuel. One bottle treats four to six gallons.



Diesel Injector Clean (ADF)

Total system cleaner and lubricity improver for all types of heavy- and light-duty diesel engines, including high-pressure common-rail (HPCR) designs. Outstanding formula cleans all deposits, including carbon deposits on the nozzle and internal diesel injector deposits (IDID) on the pintle. Formulated with ultra-low-sulfur diesel fuel (ULSD) in mind, it effectively cleans fuel injectors and combustion chamber for improved efficiency and better sealing. Minimizes soot-loading. Improves the oxidation and thermal stability of diesel fuel, improves fuel economy by up to 4.5 percent, restores horsepower and protects against water contamination. Compatible with all types of exhaust emission systems, including diesel particulate filters (DPF). Also recommended in heating-oil furnace applications. One ounce treats five gallons of fuel. One 16-oz. bottle treats 80 gallons; one 8-oz. bottle treats up to 20 gallons.



Diesel Cold Flow (ACF)

Recommended for low-temperature applications below 40°F. Effectively modifies wax crystal formation at low temperatures to depress diesel fuel pour point and improve cold-flow filtration properties. Lowers the cold filter plugging point (CFPP) by up to 20°F (15°C) in ultra-low-sulfur diesel fuel (ULSD). Contains jet-fuel-type deicer to help prevent ice formation in fuels contaminated with water. Compatible with diesel particulate filters (DPF). Two ounces treat five gallons of fuel. One bottle treats 40 gallons.



Diesel Injector Clean + Cold Flow (DFC)

Premium, year-round diesel fuel additive that provides improved efficiency and maximum cold-weather performance. Outstanding formula cleans all deposits, including carbon deposits on the nozzle and internal diesel injector deposits (IDID) on the pintle. Combines the superior detergency and lubricity of AMSOIL Diesel Injector Clean with the excellent anti-gelling properties of AMSOIL Diesel Cold Flow in one convenient package without sacrificing performance. Two ounces treat five gallons of fuel. One bottle treats 40 gallons.



Diesel Cetane Boost (ACB)

Raises the cetane number of diesel fuel up to seven points for maximum horsepower, increased fuel economy and easier starts in all diesel engines. One ounce treats up to 10 gallons of fuel. One bottle treats up to 160 gallons.

Five-gallon pails and 55-gallon drums are filled to 98 percent of packaging capacity to allow for product expansion in warm temperatures.





DRC

Keep a bottle on hand for emergencies

Diesel Recovery (DRC)

Quickly and effectively dissolves the wax crystals that form when diesel fuel surpasses its cloud point. Quickly liquefies gelled diesel fuel, thaws frozen fuel filters and reduces the need for a new filter, saving money and allowing the operator to continue driving with minimal downtime. Performs well in all diesel fuels, including ULSD, off-road and biodiesel. Alcohol-free and non-corrosive. One bottle treats 30 gallons.



APF

Power Foam® (APF)

Removes stubborn carbon deposits, varnish and gum in combustion intake systems. Helps restore startability and engine smoothness, while maximizing fuel economy and horsepower for improved overall engine performance. Especially effective in powersports, small-engine and carbureted-vehicle applications.



ADG

Heavy-Duty Degreaser (ADG)

Formulated with powerful and fast-acting solvents, attacking petroleum-based grime on a molecular level to loosen its hold on metal, concrete, engines and other surfaces. Active d'limonene (citrus) formula makes cleaning easy and leaves a clean scent.



ALS

Silicone Spray (ALS)

Effectively lubricates and protects rubber, nylon, plastics, upholstery, vinyl, wood, cardboard, fiberglass and other nonmetal surfaces with a dry lubricating film. Helps prevent the cracking and drying of rubber, locks-out moisture and will not attract dust or dirt. Special nonstaining formula is excellent for waterproofing and protecting leather boots, shoes, jackets, suede and more.

Hundreds of household uses



AMP

Metal Protector (AMP)

Disperses water and protects metal surfaces from rust and corrosion. Penetrates existing rust build-up and loosens bolts. Also dries wet electrical systems. A must for any home or shop. Keep a can in your vehicle too.

Heavy Duty Metal Protector (AMH)

Heavy-duty spray lubricant fortified with special rust and corrosion inhibitors. Penetrates and adheres to metal surfaces, leaving a dry, long lasting wax-like protective coating. Dries completely and doesn't attract dust. Works well as an undercoat, preventing rust and eliminating squeaks.



AMH

FLSH



Engine and Transmission Flush (FLSH)

Helps restore operating efficiency, increase fuel economy and reduce emissions in gasoline and diesel engines and automatic transmissions. Its potent, detergent-based formula dissolves and disperses sludge, varnish and deposits, promoting lower operating temperatures and reduced oil consumption. More environmentally friendly than solvent-based products, providing safer cleaning action and easy disposal with waste oil.

Dominator® Coolant Boost (RDCB)

Provides quick and effective heat transfer inside radiator and cylinder heads, resulting in reduced operating temperatures, more efficient operation, increased horsepower and quicker engine warm-up times. Robust mixture of corrosion inhibitors effectively protect the radiator, heater core, water pump, cylinder heads, engine block and intake manifold from the damaging effects of corrosion. Recommended with both racing applications using straight water coolant and automotive applications using 50/50 coolant/water mixtures.

RDCB



ANT



Propylene Glycol Antifreeze & Coolant (ANT)

For use in heavy-duty applications and all passenger cars and light trucks. Combines the benefits of biodegradability, low toxicity and all-weather protection. Offers protection up to 600,000 miles, 12,000 hours or six years, whichever comes first, in heavy-duty applications and 150,000 miles or five years, whichever comes first, in passenger cars and light trucks. Fully formulated: DOES NOT require the use of supplemental antifreeze/coolant additives (SCAs) or extenders. 100 percent concentrate; must be mixed with water. Compatible with all other major antifreeze/coolant products.

ASTM D4985, D6210 • Case IH • Caterpillar EC-1 • Chrysler MS7170 • Cummins CES14603 • Detroit Diesel 7SE298, 93K217 • Fiat Professional; Fiat Truck • Ford WSS-M97B51-A1 • Freightliner 48-22880 • John Deere 8650-5 • Mack Truck CNH • MTU MTL5048, 5049 • New Holland • PACCAR: Kenworth, Peterbilt • TMC of ATA RP329, 330, 338 • US Military CID A-A-52624A

Passenger Car/Light Truck Antifreeze & Coolant (ANTPC)

For use in all passenger cars and light trucks. Provides maximum cooling-system protection in extreme temperatures and operating conditions. Offers protection up to 150,000 miles or five years, whichever comes first. Engineered to exceed original equipment manufacturer (OEM) requirements. Pre-mixed 50/50 with high-purity water. Compatible with all other major antifreeze/coolant products.

ANTPC



ANTHD



Heavy-Duty Antifreeze & Coolant (ANTHD)

Provides maximum cooling-system protection in extreme temperatures and operating conditions. Offers protection up to 600,000 miles, 12,000 hours or six years, whichever comes first, in heavy-duty applications. Fully formulated: DOES NOT require the use of supplemental coolant additives (SCAs) or extenders. Pre-mixed 50/50 with high-purity water. Compatible with all other major antifreeze/coolant products.

ASTM D4985, D6210 • Case IH • Caterpillar EC-1 • Chrysler MS7170 • Cummins CES14603 • Detroit Diesel 7SE298, 93K217 • Fiat Professional; Fiat Truck • Ford WSS-M97B51-A1 • Freightliner 48-22880 • John Deere 8650-5 • Mack Truck CNH • MTU MTL5048, 5049 • New Holland • PACCAR: Kenworth, Peterbilt • TMC of ATA RP329, 330, 338 • US Military CID A-A-52624A



High Performance Brake Fluid

Provides superior performance in auto/light truck, high-performance, racing and powersports applications. Maintains stable viscosity over a wide temperature range. Superior additive package raises boiling point. Water is kept in suspension, slowing its effects on braking systems. High boiling temperature ensures maximum life and reliable braking power in extreme conditions.

Series 500 High Performance DOT 3 Brake Fluid (BF3)

FMVSS 116 • SAE J1703 • ISO 4925 • Federal Specification V V-B-680

Series 600 High Performance DOT 4 Brake Fluid (BF4)

FMVSS 116 • SAE J1704 • ISO 4925 • Federal Specification V V-B-680

Multi-Vehicle Synthetic Power Steering Fluid (PSF)

Effectively reduces friction and delivers excellent wear protection and lubricity, resulting in cooler operating temperatures, longer component life and quieter operation. Low pour point ensures immediate lubrication at startup and in cold temperatures, while high viscosity index resists thermal breakdown and maintains maximum protection in high temperatures.

American Motor Corporation C 4124 • BMW 82 11 0 148 132; 83 29 0 429 576; 81 22 1 468 879 & 82 11 1 468 041 • Chrysler MS-1872; MS-5931, MS-9602 & MS-11655 • Ford M2C138-CJ; ESW-M2C128-C&D; M2C195-A; M2C204-A & M2C33-F • GM/Saginaw PSF 9985010; 9985835 & 89021184 • Hyundai/Kia PSF-3; PSF-4 & PSF 00232-19017 • Mercedes Benz 236.3; 345.0; 001 989 24 03 10; 001 989 24 03 12 & Q 1 32 0001 • Mitsubishi Diamond SP III & PS Fluid • Navistar TMS 6810 • Nissan PSF-II • Porsche 000 043 206 56 • Saab 93160548; (45) 30 09 800 & 30 32 380 • Subaru KO209A0080 • Toyota PSF Type EH; P/N 008886-01 • Volvo 1161529 & 30741424 • VW/Audi TL-52146; G002000; G 004 000 M2; G 004 000 M7 & G 004 000 M8



Fluid Extraction Pump (G2576)

Aids in the removal of power steering fluid, motor oil, drivetrain lubricants and engine coolant. Can also be used to install fresh lubricants in hard-to-reach areas.



Miracle Wash® Waterless Wash & Wax (AMW)

A unique dry car wash and polish delivers outstanding performance and quick, easy and economical application. No water required. Specially formulated surfactants lift dirt and other particles from the surface and hold them in suspension. Miracle Wash then acts as a shield, protecting the surface from abrasion while you wipe the dirt away. Repels dust and light dirt particles and protects against the sun's ultraviolet rays.



Aftermarket Partners

AMSOIL also offers premium filtration products from its aftermarket partners, including Donaldson, WIX and MANN FILTER.

For product and pricing information, call 1-800-956-5695 (Monday - Friday, 7 a.m. - 5 p.m. Central Time) or contact the AMSOIL Dealer listed on the back of your catalog (if one is listed).



The First in Synthetics®

Jeff Fisher

866-292-4700

www.SyntheticOils.us

Contact your local full-service AMSOIL Dealer for more information on AMSOIL products or to place an order. You may also order direct by calling AMSOIL INC. at 1-800-956-5695 and providing the referral number listed here. ▼

Referral # **1393814**