

# AMSOIL<sup>®</sup>

▶ PREFERRED CUSTOMER EDITION

## MAGAZINE

SPRING 2024



# AMSOIL HAS MOTORCYCLES COVERED

| PAGE 4

A Closer Look at Diesel Fuel Systems | PAGE 8



## STAFF

### Editor

Terry Johnsen

### Associate Editor

Joel Youngman

### Staff Writers

David Hilgendorf

Brad Nelson

Jamie Trembath

Joel Youngman

### Graphic Design Manager

Jeff Spry

### Senior Graphic Designer

Luke Boynton

### Content Contribution

Len Groom

Mark Nyholm

Alex Thompson

### Editorial Contribution

Len Groom

### Back Issues

Back issues of *AMSOIL Magazine* are available for \$1 each. Order G17PC and specify the month and year.

### On the Web

[AMSOIL.com](http://AMSOIL.com)

[AMSOIL.ca](http://AMSOIL.ca)

### Chairman & CEO

Alan Amatuzio

### President

Bhadresh Sutaria

© 2024, AMSOIL INC.

All rights reserved.

Printed by Arrowhead Printing  
Duluth, MN USA.

### Testimonials

AMSOIL INC.

Communications Department

The AMSOIL Building

925 Tower Ave.

Superior, WI 54880

[testimonials@AMSOIL.com](mailto:testimonials@AMSOIL.com)



## POWERFUL PROTECTION WITH A SLED WARRANTY TO MATCH

Don't let the snowmobile manufacturer dictate which oil you use. Choose the superior protection provided by AMSOIL INTERCEPTOR® for your new, current-model-year or newer sled and we'll back you with our Runs on Freedom Limited Snowmobile Warranty that covers engine repairs for up to two years/5,000 miles/8,000 km.\*



**\*Get the details and sign up at  
[AMSOIL.com/rofwarranty](http://AMSOIL.com/rofwarranty).**



## TABLE OF CONTENTS - PRODUCTS

Gasoline Motor Oil	14
European Motor Oil	18
Classic/Collector Car Motor Oil	20
Racing Oil	22
Diesel Oil	24
Transmission Fluid	26
Gear Lube	28
Fuel Additives	30
Filters	32
Grease	33
ATV/UTV Oil	34
Motorcycle Oil	36
Dirt Bike Oil	38
4-Stroke Oil	39
2-Stroke Oil	40
Marine Oil	42
Cleaners and Protectants	44
Miscellaneous	46

## PREFERRED CUSTOMER EDITION

SPRING 2024

## FEATURES

- 4 AMSOIL Has Motorcycles Covered
- 8 A Closer Look at Diesel Fuel Systems
- 10 Powerful Cleaning Action
- 11 Built for Road Warriors
- 12 Muscle Car Mania: Mopar or No Car

## DEPARTMENTS

- 7 Tech Talk

## ADVERTISEMENTS

- 2 Powerful Protection with a Sled Warranty to Match
- 6 What's the Right Motor Oil for You?
- 48 Specialized Lubricants Engineered for What You Drive and How You Drive



## THE COVER

Motorcycles are subject to extreme operating conditions. No matter what you ride, AMSOIL has your motorcycle covered with top-of-the-line protection and performance.

\*All trademarked names and images are the property of their respective owners and may be registered marks in some countries. No affiliation or endorsement claim, express or implied, is made by their use.



V-TWIN

METRIC

DIRT

# AMSOIL Has Motorcycles Covered

Motorcycles are frequently ridden in stop-and-go traffic and during hot summer months, which increases engine heat. Elevated heat breaks down conventional oils, reducing their ability to protect against wear. Conventional oils are also prone to evaporate, which leads to increased oil consumption and transmission wear, and requires owners to top off their oil. And in bikes with a wet clutch, the oil does double duty by lubricating the transmission, which exposes it to mechanical shearing.

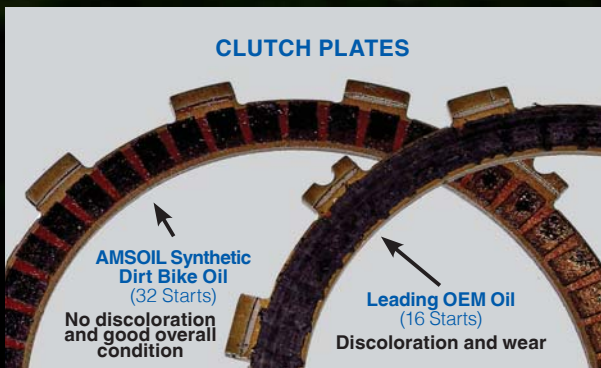
For maximum performance and protection, motorcycles need oil designed to resist extreme heat, guard against engine and transmission wear and provide smooth, confident shifts in all kinds of weather and operating conditions.

Synthetic base oils naturally reduce friction better than conventional oils, to help keep engines running cool. AMSOIL synthetic motorcycle oil is engineered with premium synthetic base oils that help protect engines from extreme heat and keep parts free from performance-robbing deposits. Advanced oxidation-inhibiting and anti-wear additives help maintain proper lubrication, reduce engine and transmission wear, and prevent clutch glazing and slippage to promote smooth shifting, positive wet-clutch engagement and extended clutch life. And its low volatility helps reduce oil consumption for extended oil life and optimum long-term lubrication performance.

AMSOIL motorcycle products are formulated to provide superior performance and protection, whether you ride two-stroke, four-stroke, V-twins, metric motorcycles or dirt bikes. Our complete line extends beyond motor oil to include complete oil-change kits, oil filters, cleaners and protectants, brake fluid, transmission fluid, suspension fluid, grease, coolant and fuel additives. Quickly find the right AMSOIL products with our Motorcycle Lookup.

## AMSOIL DELIVERS CONFIDENT CLUTCH FEEL.

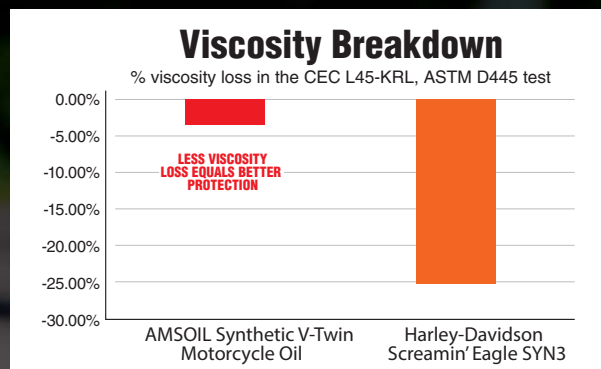
AMSOIL provides excellent clutch protection.<sup>7</sup> How good is it? In extreme simulated-start testing, AMSOIL provided superior wear protection and kept clutch plates looking new.



<sup>7</sup>Based on dyno testing of a Honda® CRF450 dirt bike using AMSOIL 10W-40 Synthetic Dirt Bike Oil and a leading original equipment manufacturer 10W-40 conventional dirt bike oil. \*All trademarked names and images are the property of their respective owners and may be registered marks in some countries. No affiliation or endorsement claim, express or implied, is made by their use.

## AMSOIL RESISTS VISCOSITY BREAKDOWN

AMSOIL resists viscosity breakdown **6X better** than Harley-Davidson\* SYN3\* for **improved protection** against compensator and transmission gear wear.<sup>8B</sup>



<sup>8B</sup>Based on testing of AMSOIL 20W-50 Synthetic V-Twin Motorcycle Oil and Harley-Davidson Screamin' Eagle SYN3 purchased on 3/19/19 in the CEC L45-KRL, ASTM D445 test. \*All trademarked names and images are the property of their respective owners and may be registered marks in some countries. No affiliation or endorsement claim, express or implied, is made by their use.



FUEL ADDITIVES



OIL-CHANGE KITS



CLEANERS, PROTECTANTS, COOLANT



# What's the Right Motor Oil for You?

No matter what you drive or how you drive, we formulate industry-leading motor oil to protect your vehicle. Use the chart below to choose the right motor oil for your ride.

## Frequently Asked Questions

### Why do I need AMSOIL High-Mileage Motor Oil?

For engines exceeding 75,000 miles (120,000 km) with unknown maintenance history or known usage of lower-quality oil, AMSOIL High-Mileage Motor Oil provides an added boost of detergents to clean sludge and deposits. It also features a robust viscosity that provides additional wear protection, even after some wear has already occurred. Added seal conditioners extend the life of seals and help protect against drying, cracking and leaking.

### When should I use AMSOIL High-Mileage Motor Oil?

A good rule of thumb is to use AMSOIL High-Mileage Motor Oil at or around the time your vehicle has accumulated 75,000 miles (120,000 km). While 75,000 is not an extreme number of miles today, it is an ideal time to prepare your engine for the road ahead with an added boost of protection.

### Do I need to use AMSOIL High-Mileage Motor Oil if I've already been using AMSOIL motor oil?

No. If you've been consistently using AMSOIL motor oil, your engine is already operating at peak performance and has been protected against wear. However, if you've been

using AMSOIL OE and are looking for an upgrade in overall engine protection as it ages, AMSOIL High-Mileage Motor Oil is an excellent choice.

### Aren't AMSOIL motor oils recommended for vehicles regardless of mileage?

Correct, all AMSOIL motor oils offer outstanding performance and protection regardless of vehicle mileage. However, for those seeking targeted benefits at an affordable price, AMSOIL High-Mileage Motor Oil is the best choice for high-mileage applications. For those seeking the ultimate performance and protection regardless of miles, we still recommend Signature Series Motor Oil.

### Is AMSOIL High-Mileage Motor Oil the best AMSOIL product to use in high-mileage vehicles?

AMSOIL offers two excellent products that provide boosted benefits for high-mileage applications. AMSOIL High-Mileage Motor Oil focuses on the key challenges that high-mileage vehicles face at a lower price point. AMSOIL Signature Series Motor Oil does everything High-Mileage Motor Oil does, while providing industry-leading performance and protection across the board. Signature Series is the best choice regardless of vehicle mileage.

### Why do I need Hybrid Motor Oil?

Hybrid engines operate under a different set of parameters and conditions that typically result in additional fuel and water contamination, leading to corrosion. AMSOIL Hybrid Motor Oil is uniquely formulated to address these specific challenges.

### When should I use Hybrid Motor Oil?

AMSOIL Hybrid Motor Oil is an excellent choice for any hybrid electric (HEV) or plug-in hybrid electric vehicle (PHEV), regardless of miles or age of the vehicle.

### What if I've been using another AMSOIL motor oil in my hybrid vehicle?

If you've already been using AMSOIL motor oil, your engine has received excellent protection. All AMSOIL motor oils of the appropriate viscosity are compatible with hybrid technologies, but AMSOIL Hybrid Motor Oil is specially tailored to focus on the unique challenges presented by hybrid vehicles at an affordable price. If you've been using AMSOIL OE and are looking for an upgrade in hybrid-engine protection, AMSOIL Hybrid Motor Oil is an excellent choice.



	SIGNATURE SERIES	EXTENDED-LIFE (XL)	HIGH-MILEAGE	HYBRID	OE
WEAR PROTECTION	✓✓✓✓✓	✓✓✓	✓✓✓	✓✓✓	✓✓
ENGINE CLEANLINESS	✓✓✓✓✓	✓✓✓	✓✓✓✓	✓✓	✓✓
SERVICE INTERVAL	✓✓✓✓✓	✓✓✓✓	✓✓✓	✓✓✓	✓✓
EXTREME TEMP PERFORMANCE	✓✓✓✓✓	✓✓	✓✓	✓✓✓✓	✓✓
CORROSION PROTECTION	✓✓✓✓✓	✓✓✓	✓✓	✓✓✓✓	✓✓
OIL-CONSUMPTION CONTROL	✓✓✓✓✓	✓✓✓	✓✓✓	✓✓	✓✓
VISCOSITY CONTROL	✓✓✓✓✓	✓✓✓	✓✓	✓✓✓✓	✓✓
LEAK PROTECTION	✓✓✓✓✓	✓✓	✓✓✓✓	✓✓	✓✓
SEVERE-SERVICE PROTECTION	✓✓✓✓✓	✓✓✓	✓✓	✓✓	✓✓



## Automotive oil and motorcycle oil are not the same.

Motorcycles have specific requirements that automotive oils may not address.

**Len Groom** | SR. PRODUCT MARKETING MANAGER, POWERSPORTS & POWER EQUIPMENT

Daytona Bike Week unofficially kicks off the 2024 riding season next month, and riders across the nation are champing at the bit to pull their motorcycles out of storage and hit the open road. While many riders enjoy wrenching on their bikes during the offseason, few want to be stuck in the garage doing repairs during peak riding season. As with any vehicle powered by an internal combustion engine, proper lubrication is essential to ensure performance and longevity

In the past, it was common for motorcycles to run on engine oils designed for four-stroke automobile engines. And if you spend any time on online motorcycle forums, you'll see plenty of folks still advocating the use of automotive oil for motorcycles. What is their rationale? They're looking to save a couple bucks on a quart of oil, as the majority of oils blended specifically for motorcycle applications are more expensive per quart than their automotive counterparts. But is using auto oil in your motorcycle a good practice?

There are several reasons why motorcycle oils are better for your bike than automotive oils.

Motorcycles have fundamentally different lubrication requirements than automobiles. This is due primarily to differences in both engine design and vehicle applications. Motorcycles often operate under more severe conditions than passenger cars. They usually run faster, are air-cooled and share an oil sump between the engine, clutches and gears. The oil, therefore, must lubricate not only the engine, but the transmission and, in the case of wet-clutch motorcycles, the clutches,

too. Many automotive oils, because of fuel economy requirements, are now formulated with friction modifiers. In a motorcycle with a wet clutch, these additives cause clutch slip and power loss.

Operating habits are different, too. While many of us rely on a car or truck for year-round day-to-day transportation and for longer road trips, motorcycles are often ridden seasonally, on weekends or on shorter trips. These trips often occur during warm summer weather, when the cooling system has to work even harder. Thus, a motorcycle lubricant must protect against high temperatures and high engine rpm while providing smooth wet-clutch operation and protecting gears and chains from operational pressure extremes. Because of these factors, many motorcycle oils are engineered with high viscosity to help prevent gear pitting, oil burn-off and oil consumption.

Retaining that viscosity is critical to ensure components remain protected. The high rpm and shared oil sumps common to motorcycles create an environment that promotes shearing. In fact, transmission gear sets are the leading cause of shear-induced viscosity loss in motorcycle applications. The oil's shear-stability and viscosity retention are vital for protecting motorcycles.

Additionally, motorcycles are often stored for several months during winter – a time when condensation can cause rust, which accelerates wear and can damage engine components. Rust is also a problem inherent to the shorter drive times motorcycles

often endure. If not combated, rust can cause bearing corrosion which results in vibration, noise, increased temperatures and catastrophic failure. Effective motorcycle oils must include rust inhibitors to keep engines and components free from corrosion.

Motorcycle oils must also prevent foam from forming, which happens when air enters the lubricating oil during normal engine and transmission operation. Foam bubbles entering a lubricated area take the place of the lubricant film and compress easily, leading to metal-to-metal contact. Foam also promotes increased oxidation because more of the oil's surface area is exposed to oxygen. An oil's tendency to foam should be considered when selecting an oil for your motorcycle.

For many riders, motorcycles represent significant investments of thousands of dollars. It only makes sense to protect those investments with products tailored to address their specific lubrication requirements.

# A CLOSER LOOK AT DIESEL FUEL SYSTEMS

AMSOIL diesel fuel additives help customers solve problems and keep their diesel equipment running smoothly and efficiently.

Diesel fuel systems have changed dramatically over the past 25 years. Technological advancements have provided diesel owners with more power, better fuel economy and better starting, but those advancements don't come without a learning curve. While original equipment manufacturers (OEMs) and aftermarket parts suppliers continually improve their products, diesel fuel systems still require support from fuel additives with every tank.

## HEUI Systems

A variety of fuel-injection systems have been used since the dawn of the internal combustion engine. In 1993, Caterpillar\* introduced Hydraulically Actuated Electronic Unit Injection (HEUI), where the injectors were no longer camshaft-operated. HEUI was developed to increase fuel efficiency and decrease emissions without losing engine torque.

In a HEUI injector, oil pressurized between approximately 500 to 3,000 psi by a high-pressure oil pump (HPOP) is used to pressurize fuel inside the injector. The HPOP is separate from the engine's oil pump, which provides oil pressure for lubrication; the HPOP is dedicated to providing pressure to the HEUI injectors only.

HEUI injectors can be broken down into two basic sections: a fuel chamber and an oil chamber. A low-pressure fuel pump supplies fuel to the injector and a high-pressure oil pump supplies pressurized oil to the injector. During the injection cycle, an actuator allows high-pressure oil to enter the oil chamber of the injector body, applying pressure to an intensifier piston.

The fuel chamber of the injector lies on the other side of the piston. The intensifier piston pressurizes fuel at a rate of seven times the oil pressure. This fuel becomes pressurized before an electric actuator releases it through the injector nozzle.

HEUI injectors presented many benefits compared to the mechanical injectors of their time. For example, HEUI injectors allowed for improved throttle response. At low engine speeds, the engine produced higher fuel pressure for better fuel economy. Injection timing and the fuel rate could also be controlled electronically.

Essentially, HEUI systems reduced exhaust emissions and increased engine performance, regardless of speed.

## Common-Rail Direct Fuel Injection

Common-rail direct fuel injection is a modern variant of a direct fuel-injection system for diesel engines. The name "common rail" is used because all fuel injectors receive fuel from the same fuel rail, as opposed to individual lines for each injector.

## HPCR Systems

High-pressure common-rail (HPCR) systems were designed to supply the demand for more power, while still satisfying various emissions regulations. HPCR systems today are suitable for all types of diesel engines. They feature a high-pressure fuel rail feeding individual solenoid valves, as opposed to a low-pressure fuel pump feeding unit injectors.

HPCR injection is a technique for delivering pressurized fuel to injectors. The low-pressure fuel lift pump delivers fuel to a high-pressure injection pump, which pressurizes fuel up to 30,000 psi and sends it to the common rail. Because pressurized fuel is stored in the common rail, injection pressures are less dependent on engine speed, unlike HEUI and mechanical injection systems. Today's HPCR systems also use piezoelectric injectors, which allow for multiple injection events per cycle.

All of this translates into increased low-end performance, improved fuel economy, reduced engine noise and

significantly lower emissions.

## Injection-System Problems

Diesel-fuel quality is highly variable, with large differences often occurring between, and even within, regions. Such fuel variability can create problems for owners and operators. The American Society for Testing and Materials (ASTM) D975 specification covers seven grades of diesel fuel suitable for various types of diesel engines. Low-grade fuels burn at a high heat value, but produce more contaminants. Higher-grade fuels have a lower heat value, but produce fewer contaminants. The requirements specified for diesel fuel are determined in accordance with test methods for cloud point, carbon residue, ash, distillation, viscosity, sulfur, copper corrosion, cetane number, cetane index and viscosity.

There are two main causes of fuel-injector failure associated with the properties of the fuel itself: wear and deposits.

## Wear

While wear is common and problematic in older fuel-injection systems, such as HEUI systems, it is potentially more common in HPCR engines since the injectors are smaller, bear higher pressures and activate up to five times more per combustion cycle. Excessive wear can be caused by poor fuel lubricity or abrasion, and lubricity is key to keeping injectors from wearing out.

Ultra-low-sulfur diesel (ULSD) has a maximum allowable sulfur content, but the process by which sulfur is removed from fuel also removes the wax that provides lubrication, resulting in the need for diesel owners to use lubricity improvers.

## Deposit Buildup

The two major types of deposits relating to fuel-injector failure are external injector deposits and internal injector deposits.



## External Injector Deposits

External injector deposits, or coking deposits, are usually caused by fuel that does not burn completely and builds up on the injector nozzle in the combustion chamber, plugging the holes affecting spray pattern. These deposits can appear dark brown to black in color and carbonaceous or scaly in texture.

External injector deposits, in most cases, won't lead to fuel-injector failure; however, they can disrupt fuel spray and lead to inefficient fuel combustion. This inefficient fuel combustion can become noticeable through reduced vehicle power or fuel economy. Diesel additives have been successful in controlling the buildup of external deposits and ensuring efficient performance from the fuel injector.

## Internal Injector Deposits

Internal injector deposits form on the internal parts of the injectors, such as the injector needles and pilot valves. Though they can go unnoticed, common symptoms of internal injector deposits include difficult starts, rough idling and sluggish performance.

Internal injector deposits appear light grayish and look very similar to coking deposits. They can form in most diesel engines, but are known to cause problems in HPCR diesel engines due to small clearances between the injector body and pintle, high-pressure fuel flowing through it and high fuel temperatures inside the injector that lead to deposits plating out on injector surfaces, reduced design clearances and a sluggish or faulty injector.

## Cold Weather

Wax concentrations in diesel fuel can lead to cold-weather problems in diesel engines. As the temperature drops, wax crystals form in low-sulfur diesel fuel. The fuel becomes thicker and gradually gels until it finally clogs the filter, fuel lines or injectors. If the temperature is sufficiently low, excessive crystal formation can block the fuel filters and lines, causing difficult engine starts and the potential for the engine to stop running due to fuel starvation. This effect can be minimized and controlled with the use of cold-flow improvers.

Cold-flow diesel fuel additives are designed to prevent gelling and enhance diesel fuel cold-weather performance. They work by modifying the size and shape of the wax crystals, allowing the treated fuel to operate at lower temperatures without problems. Modifying the wax crystal formation in fuel lowers the cold filter-plugging point (CFPP), eliminating fuel-line freeze, preventing fuel-filter icing and reducing corrosion due to moisture caused by condensation in the fuel tank.

When diesel fuel surpasses its CFPP, the wax crystals clog the fuel filter and starve the engine of fuel, preventing it from starting. Emergency diesel-fuel treatment additives are added to the fuel filter and fuel tank when the vehicle won't start or is having a hard time running, melting the solidified wax crystals and dissolving ice to get the engine back up and running quickly.

## AMSOIL Diesel Fuel Additives

Poor diesel fuel quality can foul injectors, accelerate injector pump wear, lead to rough running, impede starting and cause cold-temperature stalling. AMSOIL diesel fuel additives effectively combat these issues and help improve diesel engine performance.

### AMSOIL Diesel Injector Clean (ADF)

- **Cleans** dirty injectors
- **Lubricates** pumps and injectors to reduce wear
- **Extends** fuel filter life
- **Improves** fuel economy up to 8%

### AMSOIL Diesel Cold Flow (ADD)

- **Lowers** cold filter-plugging point (CFPP) by up to 40°F (22°C)
- **Enhances** engine reliability in cold temperatures
- **Fights** gelling in cold weather
- **Improves** low-temperature startability

### AMSOIL Diesel Recovery (DRC)

- **Quickly** dissolves gelled fuel
- **Thaws** frozen fuel filters
- **Performs** well in ULSD, off-road & biodiesel
- **Alcohol-free** and non-corrosive

### AMSOIL Diesel Cetane Boost (ACB)

- **Increases** cetane up to 8 points
- **Delivers** maximum horsepower
- **Increases** fuel economy
- **Improves** startability

### AMSOIL Diesel Injector Clean + Cetane Boost (ADS)

- **Combines** the superior detergency and improved lubricity of Diesel Injector Clean and the increased horsepower and cetane of Diesel Cetane Boost in one convenient package

### AMSOIL Diesel All-In-One (ADB)

- **Combines** the superior detergency and improved lubricity of Diesel Injector Clean, the excellent cold-flow and anti-gelling properties of Diesel Cold Flow and the increased horsepower and cetane of Diesel Cetane Boost in one convenient package, providing the full potency and benefits of all three products at an affordable price





# POWERFUL CLEANING ACTION

AMSOIL Heavy-Duty Degreaser and AMSOIL Engine Degreaser are powerful cleaning products, effectively removing grease and grime from vehicles, equipment and workspaces.

## AMSOIL Heavy-Duty Degreaser

AMSOIL Heavy-Duty Degreaser (ADG) is formulated with powerful and fast-acting solvents, attacking petroleum-based grime on a molecular level to loosen its hold on metal, concrete and other surfaces. Its active citrus formula makes cleaning easy and leaves a clean scent.

- **Dissolves** oil, tar and grime
- **Removes** sticky residue
- **Works** fast
- **Low-VOC** formula
- **Non-foaming**

### Applications

- Metal surfaces
- Oil-stained concrete
- Adhesive-coated surfaces
- Heavy-duty equipment
- Gears and chains
- Powersports equipment
- Farm equipment and more



## AMSOIL Engine Degreaser

AMSOIL Engine Degreaser (AED) is a professional-strength formula fine-tuned specifically to quickly and easily remove the toughest grease, dirt and grime from engine surfaces. Just spray it on and wash off with water.

- **Removes** the toughest grease, dirt and grime
- **Leaves** no residue
- **Easy** to use
- **Powerful** stream
- **Safe** on all engine components

### Applications

- Engine surfaces



**WHERE SHOULD I USE HEAVY-DUTY DEGREASER AND WHERE SHOULD I USE ENGINE DEGREASER?**

AMSOIL Heavy-Duty Degreaser and AMSOIL Engine Degreaser both offer outstanding degreasing benefits, but feature different formulas fine-tuned for their intended purpose. Heavy-Duty Degreaser is a multi-purpose, citrus-based degreaser that is safer on plastic, paint and rubber. Engine Degreaser is a proprietary formula designed specifically to remove dirt and grime from modern vehicle engines. For optimal results, do not use Heavy-Duty Degreaser to clean engines and do not use Engine Degreaser with plastic, paint or rubber.

# Built for Road Warriors

AMSOIL Extended-Life 100% Synthetic Motor Oil provides excellent protection, extended drains and outstanding value.

AMSOIL Extended-Life 100% Synthetic Motor Oil is overbuilt for road warriors so they can confidently drive 20,000 miles (32,000 km) or one year between oil changes. It provides a proprietary combination of advanced synthetic base oils and a boosted additive package that promotes engine cleanliness and longevity. Extended-Life delivers peace of mind and convenience far beyond most competitor motor oils – and does it at a competitive price. The line provides excellent value for commuters and other drivers who put a lot of miles on their daily drivers and value reliable protection, but don't believe they need an ultra-premium product like AMSOIL Signature Series. AMSOIL Extended-Life 100% Synthetic Motor Oil is made for these drivers.

## Excellent Protection, Excellent Price

Don't let the price fool you; AMSOIL Extended-Life Motor Oil offers an impressive list of product attributes normally only found in ultra-premium products.

### KEY PRODUCT ATTRIBUTES

- **Provides** extended drains up to 20,000 miles (32,000 km) or one year, whichever comes first.
- **Maintains** viscosity under the most extreme conditions.
- **Features** unique chemistry to protect against low-speed pre-ignition (LSPI).
- **Fortified** with boosted additive package that neutralizes acids and resists sludge, corrosion and carbon deposits.

## Resists Oil Breakdown

Extended-Life Synthetic Motor Oil maintains its viscosity under extreme conditions. Some oils break down and significantly increase in viscosity after extended periods of high-temperature operation. These changes can cause excessive oil consumption, engine deposits, accelerated wear and difficult cold starts. Extended-Life resists oil breakdown, ensuring protection in extreme temperatures.

## Protects Pistons from Low-Speed Pre-Ignition

Extended-Life Motor Oil features unique chemistry to guard engines against the harmful effects of low-speed pre-ignition (LSPI). LSPI is the spontaneous ignition of the fuel/air mixture prior to spark-triggered ignition. Most new engines feature gasoline direct injection (GDI), often coupled with a turbocharger. These technologies heighten the possibility of LSPI events, which can destroy pistons and connecting rods. Extended-Life Motor Oil is designed to protect engines from LSPI.

## Keeps Engines Clean

Extended-Life Synthetic Motor Oil is fortified with a boosted additive package that neutralizes acids and resists sludge, corrosion and carbon deposits. It's equipped with 37% more cleaning power to help keep your engine running smoother, longer.<sup>1</sup> The extra protection



built into Extended-Life provides peace of mind knowing your vehicle is receiving premium protection and the convenience of extended drains.

## Surpasses Industry Standards

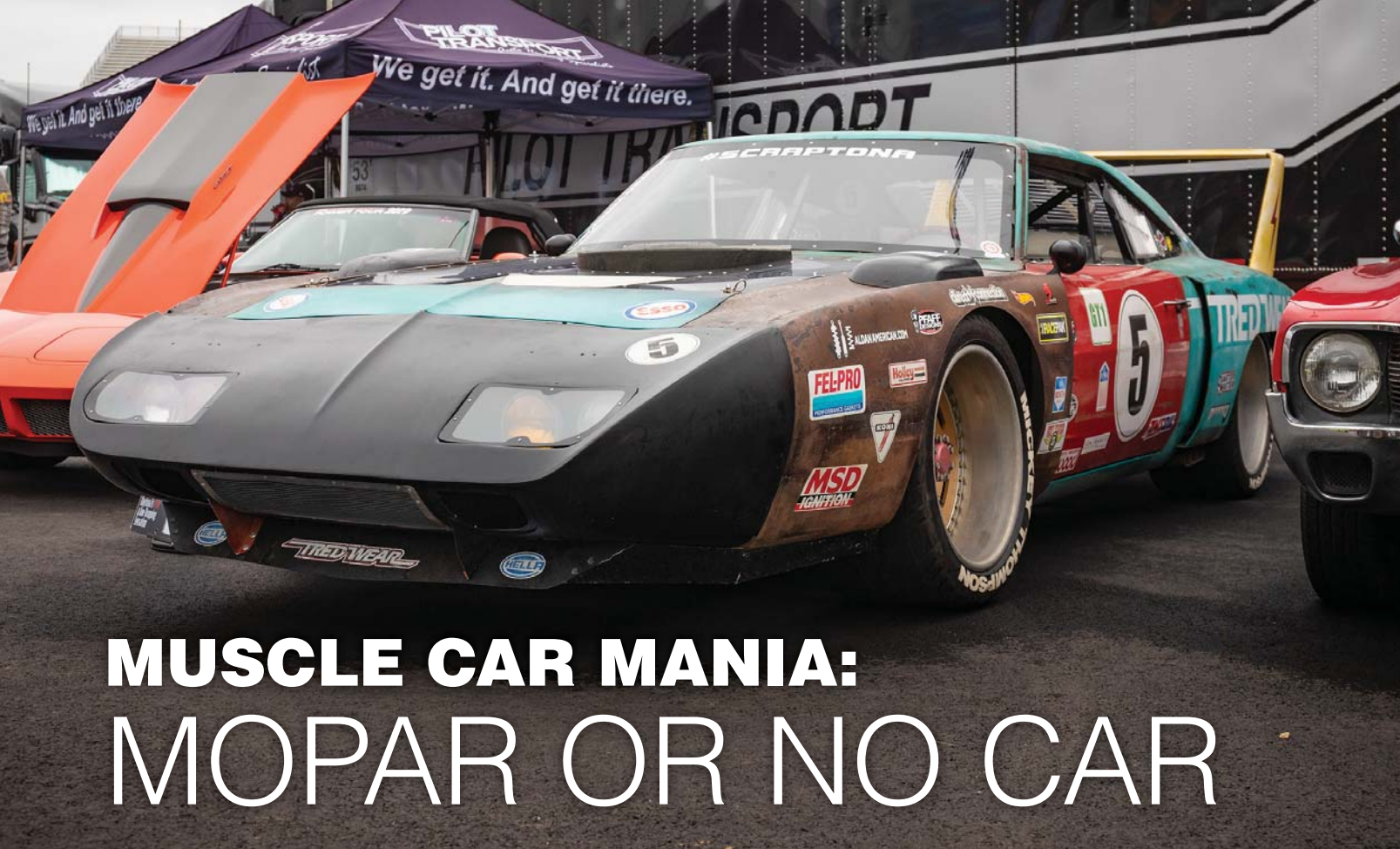
AMSOIL is a trusted name in the automotive industry. Our motor oils far surpass the leading industry standards in protection against horsepower loss, engine wear and sludge. Extended-Life Synthetic Motor Oil allows enthusiasts to enjoy extended drains at a lower price point than our ultra-premium Signature Series Synthetic Motor Oil.

## Drive On with Confidence

Extended-Life Motor Oil delivers excellent protection and value. While hardcore enthusiasts want nothing but the best motor oil, many road warriors are seeking reliable protection and the convenience of extended-drain intervals at a lower price-point. AMSOIL Extended-Life 100% Synthetic Motor Oil delivers on that impossible combination, providing advanced motor oil technology for value-seeking commuters.

<sup>1</sup>Compared to AMSOIL OE Synthetic Motor Oil.





# MUSCLE CAR MANIA: MOPAR OR NO CAR

Driving a muscle car came with ground rules. Every traffic light is a drag-racing tree. You must accept your addiction to the rumble and power. And having all that horsepower underfoot puts you in a cult of speed fanatics.

Mopar\* helped launch the muscle-car movement in 1955 with its bar-raising 300-horsepower Hemi\* V-8 engine. By the 1960s, the muscle-car era was in full force with major automakers competing to make the sickest, fastest cars on the strip. But some would argue that the late-'60s/early-'70s were the standout Mopar years, when vehicles from Dodge,\* Chrysler,\* DeSoto,\* Imperial\* and Plymouth\* were putting out eye-popping, rubber-shredding muscle cars and "Mopar or no car" was a rallying cry. Cars like the 1968 Charger\* in "Bullitt" with Steve McQueen, the 1969 Charger in "Dirty Mary, Crazy Larry" and the white 1970 Dodge Challenger R/T\* in "Vanishing Point" became stars of the big screen. And the engines that powered those seductive, two-door beasts live on as legends. We take a look under the hoods of some of them here.

## 276 FirePower Hemi V8

The Chrysler 1951 FirePower\* Hemi V8 used a hemispherical combustion chamber engine design that produced 180 horsepower. Dodge, DeSoto and Imperial also had their own variants of the Hemi engine. The bore-spacing of Chrysler FirePower engines was 4.5625 inches and most used a two-barrel carburetor. However, the 1955 Chrysler C-300 was equipped with dual Carter\* WCFB four-barrel carburetors and was rated at 300 hp, a head-turning number for the day. The FirePower Hemi also laid the foundation for the second-generation Hemi we'll discuss later.

## 383 B-Engine V-8

In 1958, Chrysler introduced the B-engine\* big-block to replace the first generation of FirePower Hemi engines. The most powerful B-engine was the 383, with a bore of 4.25 inches and

a stroke of 3.375 inches. The engine generated power through high rpm, which made it a more popular option than the larger, but lower-revving, 426 Hemi or 440. By 1970 the 383 Magnum\* boasted a peak output of 335 hp and 425 lb-ft of torque. It was used in a variety of Mopar muscle cars ranging from the Dodge Charger to the Plymouth 'Cuda.\*

## 413 Max Wedge V8

The Chrysler 413 raised block, or RB,\* engine was briefly the most powerful Mopar engine in production. Introduced in 1959, the 413 had a 4.18-inch bore and 3.75-inch stroke. It was initially used in Chrysler luxury cars, but in 1962, the 413 was reworked into a limited-production, high-performance engine known as the 413 Max Wedge,\* named for the shape of its combustion chambers. The 413 Max Wedge had

a displacement of 425 cubic inches and featured solid lifters, dual-valve springs, magnafluxed rods and short-ram induction manifolds. With an 11.0:1 compression ratio, this engine had an output of 415 hp and 470 lb-ft of torque.

### 426 Max Wedge

The 426 Max Wedge was a larger variant of the RB engine. It was introduced in 1963 with a 4.25-inch bore and three compression ratios of 11.0:1, 12.0:1 or 12.5:1 depending on the configuration. The "Stage III" 426 Max Wedge featured high-flow cylinder heads, severe-duty casting blocks with improved oil feed, a cross-ram intake manifold, two Carter 4-barrel carburetors and a high-flow, cast-iron exhaust manifold. It put out a factory-rated 425 hp and 480 lb-ft of torque to give it plenty of street cred and serve as the go-to high-performance engine until the birth of the 426 Hemi.

### 426 Hemi V-8

The 426 Hemi is arguably the most important V8 ever produced. It brought the muscle car to new levels of power and remains the standard to this day. The engine design was a "Frankenstein" of two engines, an enlarged 426 Max Wedge married to hemispherical-head technology from the 1950s Chrysler FirePower Hemi. The engine dominated the 1964 race season, including the top four spots at the Daytona 500, making cars like the Dodge Charger and Pontiac GTX\* the stuff of legend. However, NASCAR\* banned the competition-only engine until it was approved for production, causing Chrysler to sit out the 1965 NASCAR season while they designed a street version. The engine stayed in the NHRA,\* where it birthed a generation of advanced, hemi-headed engines that are still in use today.

To make it work for the street, Mopar dropped the compression ratio from 12.5:1 to 10.25:1, used cast-iron heads instead of aluminum, backed off the timing, relaxed the camshaft and redesigned the intake and exhaust manifolds. The 426 Hemi was advertised at 425 hp and 490 lb-ft of torque, and 450 hp and 472 lb-ft of torque when equipped with twin Carter AFB carburetors. Legend holds that the 426 Hemi could actually generate upward of 500 hp, but Dodge officially claimed 425 to ease insurance premiums for prospective owners. Circumstantial evidence includes

a 426 Hemi-powered Dodge Daytona\* that became the first production car to reach 200 mph on a closed circuit. Iconic Mopars like the Plymouth Road Runner,\* Plymouth Superbird\* and Dodge Charger all housed a 426 Hemi V8. But opting for the monstrous engine nearly doubled the price of these cars on the lot, which explains why just under 11,000 production Hemis made it into muscle cars and why they can fetch seven figures at auction today.

### Chrysler 440 V-8

The Chrysler 440 was the last iteration of the B-engine and one of the most iconic muscle-car engines of all time. Although not as exotic or rare as the 426 Hemi, the 440 delivered similar performance at a fraction of the cost. It was designed with a precision cast-iron block, light-wall construction, iron heads and a round bore of 4.32 inches with a 3.75-inch stroke. With the "Six-Pack\*" configuration that consisted of a 10.3:1 compression ratio and aluminum Edelbrock\* manifold topped by a trio of Holley\* 2300 series carburetors, the 440 could churn out 390 hp and 490 lb-ft of torque during the 1969 to 1971 model years. The 440 came standard in the Dodge Charger R/T, Dodge Coronet R/T\* and Plymouth Belvedere\* GTX,\* and was an option in the Dodge Super Bee\* and Plymouth Road Runner.

### Protect Your Mopar Muscle

If you're lucky enough to revel in the power of a legendary Mopar V8, protection is critical. Here's a list of AMSOIL products to help keep your classic muscle car tearing up the street for years to come.

### AMSOIL Break-In Oil

Freshly rebuilt engines should start off with AMSOIL Break-In Oil. It's formulated with zinc and phosphorus anti-wear additives to protect critical components during the break-in period when engine wear rates are highest. It doesn't contain friction modifiers to allow for quick and efficient piston-ring seating, an important aspect of the break-in process to ensure maximum power and engine longevity.

### AMSOIL Z-ROD® Synthetic Motor Oil

AMSOIL Z-ROD® is engineered specifically for classic and high-performance vehicles to perform on the street and protect during storage. It features a high-zinc oil formulation that

protects flat-tappet camshafts and critical engine components, along with a proprietary blend of rust and corrosion inhibitors for added protection during long-term storage. It's available in 10W-30, 10W-40 and 20W-50 viscosities.

### AMSOIL Assembly Lube

As they say, a great engine isn't built in a day. Partially assembled engines can sit idle for weeks or months at a time. During this process, an engine-assembly lube must be applied that will cling to parts and provide wear protection, inhibit rust and help prevent deposit formation. AMSOIL Engine Assembly Lube handles all of the above.

### Miracle Wash® Waterless Wash and Wax Spray

AMSOIL Miracle Wash is a must-have for owners dedicated to keeping their vehicle's appearance on par with its performance. Simply spray and wipe off to lift dirt away from the surface instantly. It leaves vehicles with a super-shiny finish that protects against dust, light dirt and harmful ultraviolet rays.

### AMSOIL Gasoline Stabilizer

When it's time to put her away at the end of the season, AMSOIL Gasoline Stabilizer is crucial to ensuring your ride is road-ready in spring. Gasoline can degrade in as few as 30 days. Treat your fuel tank prior to parking the vehicle for the winter to help prevent fuel degradation and poor engine performance when it's time to fire it back up.

### DOMINATOR® Octane Boost

Early V8 models were designed to use leaded gasoline. As a result, classic and collector autos often require the use of a lead substitute to preserve the components that were designed for the fuel of days gone by. AMSOIL DOMINATOR Octane Boost is excellent as a lead substitute in older vehicles. It increases octane up to four points, helping reduce engine knock, improving ignition and helping fuel burn more cleanly.

### Engine Fogging Oil

Any engine facing storage or lengthy inactivity should be treated with a good dose of Engine Fogging Oil first. Giving the cylinders a shot of oil protects them from rust, corrosion and harmful dry starts when it comes time to fire up your hot rod or classic car the following season.

# Synthetic Gasoline Motor Oil



CARLISLE  
Events



JEEP  
BEACH

## Signature Series Keeps Pistons Cleaner

Even after doubling the length of the industry-standard test, AMSOIL delivered **40% cleaner pistons** than required by the standard.<sup>FF</sup>



<sup>FF</sup>Based on independent testing of AMSOIL Signature Series 5W-30 in the Sequence IIIH Engine Test (ASTM D8111), required by the ILSAC GF-6 and API SP specifications.

## Signature Series Delivers Powerful Protection

AMSOIL delivers powerful protection. How good is it? An independent lab compared AMSOIL synthetic motor oil head-to-head against a leading competitor in a 100,000-mile (160,934-km) test<sup>F</sup>. AMSOIL provided far superior wear protection and kept bearings looking like new.



<sup>F</sup>Testing conducted in an independent lab using AMSOIL Signature Series 5W-30 Synthetic Motor Oil and a leading synthetic-blend 5W-30 motor oil in Ford F-150 trucks with 3.5L twin-turbo engines.



# Ac. J. Amouzad® SIGNATURE SERIES

## Signature Series Fights Wear

AMSOIL Signature Series Synthetic Motor Oil provides **75 percent more engine protection against horsepower loss and wear** than required by a leading industry standard<sup>A</sup>, extending the life of vital components like pistons and cams.

<sup>A</sup>Based on independent testing of AMSOIL Signature Series 0W-20 using the ASTM D6891 standard test.

## Signature Series Guards Turbos

Signature Series protects turbochargers **72% better** than required<sup>C</sup> by the GM dexos1<sup>®</sup> Gen 2 specification.

<sup>C</sup>Based on independent testing of AMSOIL Signature Series 5W-30 in the GM turbo coking test.

## Signature Series Protects Against LSPI

AMSOIL synthetic motor oils achieved **100% protection against LSPI**.<sup>B</sup>

<sup>B</sup>Based on zero LSPI events in five consecutive tests of AMSOIL Signature Series, XL and OE 5W-30 Motor Oil in the LSPI engine test required by the GM dexos1 Gen 2 specification.

## Signature Series Cleans

AMSOIL Signature Series Synthetic Motor Oil has **50% more detergents<sup>D</sup>** to help keep oil passages clean and promote oil circulation. It provides **90% better protection against sludge<sup>D,D</sup>**.

<sup>D</sup>vs. AMSOIL OE Motor Oil  
<sup>D,D</sup>Based on independent testing of AMSOIL Signature Series 5W-30 in the ASTM D6593 engine test for oil screen plugging as required by the API SN PLUS specification.

## Signature Series Helps Keep Engines Cleaner

AMSOIL Signature Series is fortified with a heavy treatment of detergent additives, delivering **28 percent more acid-neutralizing power than Mobil 1\*** and helping engines stay cleaner, longer.<sup>L</sup>

<sup>L</sup>Based upon independent testing of Mobil 1 Annual Protection Full Synthetic 5W-30 and AMSOIL Signature Series 5W-30 in ASTM D2896. Oils purchased July 2020. \*All trademarked names and images are the property of their respective owners and may be registered marks in some countries. No affiliation or endorsement claim, express or implied, is made by their use.

## Signature Series Resists Viscosity Increase

AMSOIL is barely challenged by the industry-standard testing, demonstrating only a 0.1% viscosity increase. Even when the test length is doubled, AMSOIL **delivered twice the viscosity control** required by the standard.<sup>G</sup>

<sup>G</sup>Based on independent testing of AMSOIL Signature Series 5W-30 in the Sequence IIIH Engine Test (ASTM D8111), required by the ILSAC GF-6 and API SP specifications.

## Signature Series Synthetic Motor Oil

Engineered for enthusiasts seeking maximum protection and performance. Precision-formulated with cutting-edge technology and a longstanding devotion to making the world's best motor oil. The result: engine protection that blows the doors off the highest industry standards. Guaranteed protection for up to 25,000 miles (40,200 km) or 1 year, whichever comes first.

### ● 0W-20

Use in vehicles that require API SP (Resource Conserving), SN-PLUS, SN... • ILSAC GF-6A, GF-5, 4... • GM dexos1 Gen 3 (supersedes dexos1 Gen 2, 6094M) • ACEA A1/B1 • Chrysler MS-6395 • Ford WSS-M2C947-A, WSS-M2C947-B1, WSS-M2C962-A1

STOCK#	UNITS	PKG./SIZE	U.S. P.C.	CAN. P.C.
ASMQT	EA	1 Quart	11.89	15.29
ASMQT	CA	12 Quarts	134.75	173.45
ASM1G	EA	1 Gallon	44.29	55.89
ASM1G	CA	4 Gallons	167.85	211.85

### ● 5W-20

Use in vehicles that require API SP (Resource Conserving), SN-PLUS, SN... • ILSAC GF-6A, GF-5, 4... • GM dexos1 Gen 3 (supersedes dexos1 Gen 2, LL-A-025, 6094M, 4718M) • ACEA A5/B5, A1/B1 • Chrysler MS-6395 • Ford WSS-M2C945-A, WSS-M2C945-B1, WSS-M2C960-A1

STOCK#	UNITS	PKG./SIZE	U.S. P.C.	CAN. P.C.
ALMQT	EA	1 Quart	11.89	15.29
ALMQT	CA	12 Quarts	134.75	173.45
ALM1G	EA	1 Gallon	44.29	55.89
ALM1G	CA	4 Gallons	167.85	211.85

### ● 0W-30

Use in vehicles that require API SP (Resource Conserving), SN-PLUS, SN... • ILSAC GF-6A, GF-5, 4... • GM dexos1 Gen 3 (supersedes dexos1 Gen 2, LL-A-025, 6094M, 4718M) • ACEA A5/B5, A1/B1 • Chrysler MS-6395 • Ford WSS-M2C963-A1

STOCK#	UNITS	PKG./SIZE	U.S. P.C.	CAN. P.C.
AZOQT	EA	1 Quart	11.89	15.29
AZOQT	CA	12 Quarts	134.75	173.45
AZO1G	EA	1 Gallon	44.29	—
AZO1G	CA	4 Gallons	167.85	—

### ● 5W-30

Use in vehicles that require API SP (Resource Conserving), SN-PLUS, SN... • ILSAC GF-6A, GF-5, 4... • GM dexos1 Gen 3 (supersedes dexos1 Gen 2, LL-A-025, 6094M, 4718M) • ACEA A5/B5, A1/B1 • Chrysler MS-6395 • Honda HTO-06 • Ford WSS-M2C946-A, WSS-M2C929-A, WSS-M2C946-B1, WSS-M2C961-A1

STOCK#	UNITS	PKG./SIZE	U.S. P.C.	CAN. P.C.
ASLQT	EA	1 Quart	11.89	15.29
ASLQT	CA	12 Quarts	134.75	173.45
ASL1G	EA	1 Gallon	44.29	55.89
ASL1G	CA	4 Gallons	167.85	211.85

### ● 10W-30

Use in vehicles that require API SP (Resource Conserving), SN-PLUS, SN... • ILSAC GF-6A, GF-5, 4... • ACEA A5/B5, A1/B1 • Chrysler MS-6395 • Ford WSS-M2C205-A • GM LL-A-025, 6094M, 4718M

STOCK#	UNITS	PKG./SIZE	U.S. P.C.	CAN. P.C.
ATMQT	EA	1 Quart	11.89	15.29
ATMQT	CA	12 Quarts	134.75	173.45
ATM1G	EA	1 Gallon	44.29	—
ATM1G	CA	4 Gallons	167.85	—

### ● 0W-40

Use in vehicles that require API SP, SN-PLUS, SN... • Chrysler MS-12633, MS-10725, MS-10850 • Nissan GT-R • GM dexos R

STOCK#	UNITS	PKG./SIZE	U.S. P.C.	CAN. P.C.
AZFQT	EA	1 Quart	11.89	15.29
AZFQT	CA	12 Quarts	134.75	173.45

### ○ 5W-50

Use in vehicles that require API SP, SN-PLUS, SN... • Ford WSS-M2C931-C (Mustang) • GM dexos R

STOCK#	UNITS	PKG./SIZE	U.S. P.C.	CAN. P.C.
AMRQT	EA	1 Quart	11.89	15.29
AMRQT	CA	12 Quarts	134.75	173.45



TO ORDER: 1-800-777-7094 MONDAY – FRIDAY 7 A.M. – 7 P.M. • AMSOIL.COM

Free shipping on all orders of \$100 (\$130 CAN.) or more.

Orders below \$100 (\$130 Can.) pay a flat shipping rate of \$9.99 (\$12.99 Can.).





### Extended-Life 100% Synthetic Motor Oil

Overbuilt for road warriors so you can confidently drive up to 20,000 miles (32,000 km) or one year, whichever comes first, between oil changes. A proprietary combination of advanced synthetic base oils and a boosted additive package promotes cleanliness and prolonged engine life. AMSOIL Extended-Life protection delivers peace of mind and convenience.

#### ● 0W-20

Use in vehicles that require API SP (Resource Conserving), SN-PLUS, SN... • ILSAC GF-6A, GF-5, GF-4... • GM dexos1<sup>™</sup> Gen 3 (supersedes dexos1 Gen 2 and 6094M) • ACEA A1/B1 • Chrysler MS-6395 • Ford WSS-M2C947-A, WSS-M2C947-B1, WSS-M2C962-A1

STOCK#	UNITS	PKG./SIZE	U.S. P.C.	CAN. P.C.
XLZQT	EA	1 Quart	9.89	13.09
XLZQT	CA	12 Quarts	112.25	148.15
XLZ1G	EA	1 Gallon	38.79	50.99
XLZ1G	CA	4 Gallons	146.95	193.10

#### ● 5W-20

Use in vehicles that require API SP (Resource Conserving), SN-PLUS, SN... • ILSAC GF-6A, GF-5, GF-4... • GM dexos1<sup>™</sup> Gen 3 (supersedes dexos1 Gen 2 and 6094M) • ACEA A1/B1 • Chrysler MS-6395 • Ford WSS-M2C930-A, WSS-M2C945-A, WSS-M2C945-B1, WSS-M2C960-A1

STOCK#	UNITS	PKG./SIZE	U.S. P.C.	CAN. P.C.
XLMQT	EA	1 Quart	9.89	13.09
XLMQT	CA	12 Quarts	112.25	148.15
XLM1G	EA	1 Gallon	38.79	50.99
XLM1G	CA	4 Gallons	146.95	193.10

#### ● 5W-30

Use in vehicles that require API SP (Resource Conserving), SN-PLUS, SN... • ILSAC GF-6A, GF-5, GF-4... • GM dexos1<sup>™</sup> Gen 3 (supersedes dexos1 Gen 2, 4718M, 6094M and LL-A-025) • ACEA A1/B1, A5/B5 • Chrysler MS-6395 • Ford WSS-M2C929-A, WSS-M2C946-A, WSS-M2C946-B1, WSS-M2C961-A1 • Honda HTO-06

STOCK#	UNITS	PKG./SIZE	U.S. P.C.	CAN. P.C.
XLFQT	EA	1 Quart	9.89	13.09
XLFQT	CA	12 Quarts	112.25	148.15
XLF1G	EA	1 Gallon	38.79	50.99
XLF1G	CA	4 Gallons	146.95	193.10

#### ● 10W-30

Use in vehicles that require API SP (Resource Conserving), SN-PLUS, SN... • ILSAC GF-6A, GF-5, GF-4... • ACEA A1/B1, A5/B5 • Chrysler MS-6395 • Ford WSS-M2C205-A • GM 4718M, 6094M

STOCK#	UNITS	PKG./SIZE	U.S. P.C.	CAN. P.C.
XLTQT	EA	1 Quart	9.89	13.09
XLTQT	CA	12 Quarts	112.25	148.15
XLT1G	EA	1 Gallon	38.79	—
XLT1G	CA	4 Gallons	146.95	—

#### ○ 10W-40

Use in vehicles that require API SP, SN-PLUS, SN... • ACEA A3/B3, A3/B4

STOCK#	UNITS	PKG./SIZE	U.S. P.C.
XLOQT	EA	1 Quart	9.89
XLOQT	CA	12 Quarts	112.25
XLO1G	EA	1 Gallon	38.79
XLO1G	CA	4 Gallons	146.95

### OE 100% Synthetic Motor Oil

Delivers 100% synthetic engine protection for advanced automotive technology, including turbos and direct injection. Specifically formulated for the longer drain intervals recommended by original equipment (OE) manufacturers.

#### ● 0W-16

Use in vehicles that require API SP (Resource Conserving), SN-PLUS, SN... • ILSAC GF-6B

STOCK#	UNITS	PKG./SIZE	U.S. P.C.	CAN. P.C.
OESQT	EA	1 Quart	7.49	9.99
OESQT	CA	12 Quarts	84.40	112.70

#### ● 0W-20

Use in vehicles that require API SP (Resource Conserving), SN-PLUS, SN... • ILSAC GF-6A, GF-5, 4... • GM dexos1 Gen 3 (supersedes dexos1 Gen 2, 6094M) • ACEA A1/B1 • Chrysler MS-6395 • Ford WSS-M2C947-A, WSS-M2C947-B1, WSS-M2C962-A1

STOCK#	UNITS	PKG./SIZE	U.S. P.C.	CAN. P.C.
OEZQT	EA	1 Quart	7.49	9.99
OEZQT	CA	12 Quarts	84.40	112.70
OEZ1G	EA	1 Gallon	29.39	38.59
OEZ1G	CA	4 Gallons	111.10	146.05

#### ● 5W-20

Use in vehicles that require API SP (Resource Conserving), SN-PLUS, SN... • ILSAC GF-6A, GF-5, 4... • GM dexos1 Gen 3 (supersedes dexos1 Gen 2, 6094M) • ACEA A1/B1 • Chrysler MS-6395 • Ford WSS-M2C945-A, WSS-M2C930-A, WSS-M2C945-B1, WSS-M2C960-A1

STOCK#	UNITS	PKG./SIZE	U.S. P.C.	CAN. P.C.
OEMQT	EA	1 Quart	7.49	9.99
OEMQT	CA	12 Quarts	84.40	112.70
OEM1G	EA	1 Gallon	29.39	38.59
OEM1G	CA	4 Gallons	111.10	146.05

#### ● 5W-30

Use in vehicles that require API SP (Resource Conserving), SN-PLUS, SN... • ILSAC GF-6A, GF-5, 4... • GM dexos1 Gen 3 (supersedes dexos1 Gen 2, LL-A-025, 6094M, 4718M) • ACEA A5/B5, A1/B1 • Chrysler MS-6395 • Honda HTO-06 • Ford WSS-M2C946-A, WSS-M2C929-A, WSS-M2C946-B1, WSS-M2C961-A1

STOCK#	UNITS	PKG./SIZE	U.S. P.C.	CAN. P.C.
OEFQT	EA	1 Quart	7.49	9.99
OEFQT	CA	12 Quarts	84.40	112.70
OEF1G	EA	1 Gallon	29.39	38.59
OEF1G	CA	4 Gallons	111.10	146.05

#### ● 10W-30

Use in vehicles that require API SP (Resource Conserving), SN-PLUS, SN... • ILSAC GF-6A, GF-5, 4... • ACEA A5/B5, A1/B1 • Chrysler MS-6395 • Ford WSS-M2C205-A • GM 6094M, 4718M

STOCK#	UNITS	PKG./SIZE	U.S. P.C.	CAN. P.C.
OETQT	EA	1 Quart	7.49	9.99
OETQT	CA	12 Quarts	84.40	112.70

### OE Protects Against Wear

OE provides **47 percent more** wear protection.<sup>6</sup>

<sup>6</sup>Based on independent testing of OE 0W-20 in the Peugeot TU3M Wear Test as required by the dexos1 Gen 2 specification.





### 100% Synthetic Hybrid Motor Oil

Custom formulation designed to combat the unique challenges posed by hybrid electric vehicles (HEV) and plug-in hybrid electric vehicles (PHEV), like frequent starts and stops and fuel dilution. It flows quickly to reach critical components when the engine engages. Provides up to 16% better low-temperature viscosity than Mobil 1,\* delivering better protection at startup.<sup>††</sup> Features a robust viscosity that protects against the harmful effects of fuel dilution. Protects for up to 15,000 miles (24,000 km) or 1 year, whichever comes first.

#### ● 0W-16

Use in vehicles that require API SP (Resource Conserving), SN-PLUS, SN... • ILSAC GF-6B

STOCK#	UNITS	PKG./SIZE	U.S. P.C.	CAN. P.C.
HE016QT	EA	1 Quart	8.99	12.09
HE016QT	CA	12 Quarts	102.05	136.75

#### ● 0W-20

Use in vehicles that require API SP (Resource Conserving), SN-PLUS, SN... • ILSAC GF-6A, GF-5, GF-4... • GM dexos1\* Gen 3 (supersedes dexos1 Gen 2 and 6094M) • Chrysler MS-6395 • Ford WSS-M2C962-A1

STOCK#	UNITS	PKG./SIZE	U.S. P.C.	CAN. P.C.
HE020QT	EA	1 Quart	8.99	12.09
HE020QT	CA	12 Quarts	102.05	136.75

### Oil Analyzers

AMSOIL offers oil analysis service options from Oil Analyzers Inc.® By analyzing used engine oil, a qualified lab can detect mechanical problems your equipment may have developed. For more information, visit [www.oaitesting.com](http://www.oaitesting.com).

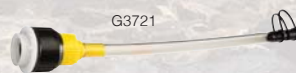
STOCK#	PKG./SIZE	U.S. P.C.	CAN. P.C.
KIT01	1 sample kit (includes two-way postage) - U.S.	29.95	-
KIT02	1 sample kit (includes UPS shipping) - U.S.	29.95	-
KIT06	1 sample kit - U.S.	21.65	-
KIT14	1 value sample kit - U.S.	16.60	-
KIT401	1 sample kit (includes UPS shipping) - CAN.	-	54.95
KIT402	1 sample kit - CAN.	-	34.25
G1206	Oil Suction Pump w/10-ft. hose	26.25	34.65
G1571	Replacement Hose 25-ft.	8.35	11.00

G1230

#### Tough-to-reach fill hole?

Order a flexible pour spout with your oil to make the job easier. Fits quarts and gallons.

PRODUCT	STOCK#	U.S. P.C.	CAN. P.C.
Flexible Pour Spout	G1230	0.80	1.05
FloTool Flexible Pour Spout	G3721	4.20	5.65



<sup>††</sup>Based on independent, third-party testing of AMSOIL 0W-20 100% Synthetic Hybrid Motor Oil and Mobil 1 0W-20 Hybrid Full Synthetic Motor Oil (batch code 10222M14A RN6613 326900 D340BUDE015 purchased April 17, 2023) in the industry-standard ASTM D5293 Cold Crank Simulator test as required by SAE J300.

### 100% Synthetic High-Mileage Motor Oil

Designed specifically for the unique demands of high-mileage engines, helping extend the life of vehicles. It features a unique formulation that delivers extra detergency and a robust viscosity to clean and protect high-mileage engines with 75,000+ miles (120,000+ km). It delivers purpose-built protection at a time in a vehicle's life where it could benefit from more-robust maintenance. AMSOIL High-Mileage Motor Oil cleans and protects engines with boosted detergency and an additive package that fights oil breakdown and oil leaks. Protects for up to 12,000 miles (19,000 km) or 1 year, whichever comes first.

#### ● 0W-20

Use in vehicles that require API SP, SN-PLUS, SN... • ILSAC GF-6A, GF-5, GF-4... • GM dexos1\* Gen 3 (supersedes dexos1 Gen 2 and 6094M) • Chrysler MS-6395 • Ford WSS-M2C947-A, WSS-M2C947-B1, WSS-M2C962-A1

STOCK#	UNITS	PKG./SIZE	U.S. P.C.	CAN. P.C.
HM020QT	EA	1 Quart	8.99	12.09
HM020QT	CA	12 Quarts	102.05	136.75

#### ● 5W-20

Use in vehicles that require API SP, SN-PLUS, SN... • ILSAC GF-6A, GF-5, GF-4... • GM dexos1\* Gen 3 (supersedes dexos1 Gen 2 and 6094M) • Chrysler MS-6395 • Ford WSS-M2C930-A, WSS-M2C945-A, WSS-M2C945-B1, WSS-M2C960-A1

STOCK#	UNITS	PKG./SIZE	U.S. P.C.	CAN. P.C.
HM520QT	EA	1 Quart	8.99	12.09
HM520QT	CA	12 Quarts	102.05	136.75

#### ● 5W-30

Use in vehicles that require API SP, SN-PLUS, SN... • ILSAC GF-6A, GF-5, GF-4... • GM dexos1\* Gen 3 (supersedes dexos1 Gen 2, GM 4718M, 6094M) • Chrysler MS-6395 • Ford WSS-M2C929-A, WSS-M2C946-A, WSS-M2C946-B1, WSS-M2C961-A1

STOCK#	UNITS	PKG./SIZE	U.S. P.C.	CAN. P.C.
HM530QT	EA	1 Quart	8.99	12.09
HM530QT	CA	12 Quarts	102.05	136.75

#### ● 10W-30

Use in vehicles that require API SP, SN-PLUS, SN... • ILSAC GF-6A, GF-5, GF-4... • GM 4718M, 6094M • Chrysler MS-6395 • Ford WSS-M2C205-A

STOCK#	UNITS	PKG./SIZE	U.S. P.C.	CAN. P.C.
HM1030QT	EA	1 Quart	8.99	12.09
HM1030QT	CA	12 Quarts	102.05	136.75

### AMSOIL Reduces Deposits

AMSOIL 100% Synthetic High-Mileage Motor Oil provides **up to 62% better deposit prevention.**<sup>www</sup>

<sup>www</sup>Based on independent testing of AMSOIL 0W-20 100% Synthetic High-Mileage Motor Oil, Valvoline® Full Synthetic High-Mileage with MaxLife® Technology 0W-20 Motor Oil (batch code J2622C5 purchased December 21, 2022) and Mobil 1® High-Mileage 0W-20 Full Synthetic Motor Oil (batch code 11022L21A 6606 purchased December 8, 2022) in the industry-standard TEOST 33C Test (ASTM D6335) as required by the ILSAC GF-6 specification.

**TO ORDER: 1-800-777-7094 MONDAY – FRIDAY 7 A.M. – 7 P.M. • AMSOIL.COM**

**Free shipping on all orders of \$100 (\$130 CAN.) or more.**

Orders below \$100 (\$130 Can.) pay a flat shipping rate of \$9.99 (\$12.99 Can.).



## Synthetic European Motor Oil



“My engine sounds better than it ever has. My BMW\* has 70,000+ miles and has never sounded this good or smooth. You can tell a lot about engines just from the sound and this baby is purring like I’ve never heard it purr. I am very pleased and glad I made the switch to AMSOIL.”

– Tom  
Atlanta, Ga.

## Synthetic European Motor Oil

Specially formulated for the lubrication needs of European gasoline and diesel cars and light trucks.

### ● 0W-20 LS-VW<sup>31</sup>

Use in vehicles that require API SN-PLUS, SN... • ACEA C5 • Porsche C20 • VW 508.00/509.00/TL52577

STOCK#	UNITS	PKG./SIZE	U.S. P.C.	CAN. P.C.
EZTQT	EA	1 Quart	11.59	15.49
EZTQT	CA	12 Quarts	131.15	175.35

### ● 0W-20 LS

Use in vehicles that require API SN-PLUS (Resource Conserving), SN, SM... • ILSAC GF-5, GF-4... • ACEA C5, A1/B1 • BMW LL-17FE+ • MB 229.71 • Ford WSS-M2C947-B1 • Opel/Vauxhall OV0401547 • Fiat 9.55535-GSX • Chrysler MS-12145 • Volvo VCC RBS0-2AE

STOCK#	UNITS	PKG./SIZE	U.S. P.C.	CAN. P.C.
AFEQT	EA	1 Quart	10.79	14.49
AFEQT	CA	12 Quarts	122.05	164.60

### ● 0W-30 MS

Use in vehicles that require API SP, SN-PLUS, SN... • ACEA C2, C3 • BMW LL-01FE • MB 229.31, 229.51, 229.52 • VW/Audi 504/507 • Porsche C30

STOCK#	UNITS	PKG./SIZE	U.S. P.C.	CAN. P.C.
EOTQT	EA	1 Quart	10.59	14.09
EOTQT	CA	12 Quarts	120.45	160.15

### ● 5W-30 LS

Use in vehicles that require API SN • ACEA C3 • GM dexos2 • Chrysler MS-11106 • MB 229.51 • BMW LL-04 • Porsche C30 • VW 504.00/507.00

STOCK#	UNITS	PKG./SIZE	U.S. P.C.	CAN. P.C.
AELQT	EA	1 Quart	12.59	16.09
AELQT	CA	12 Quarts	142.60	182.95
AEL1G	EA	1 Gallon	49.49	-
AEL1G	CA	4 Gallons	187.40	-

### ● 0W-40 FS<sup>13</sup>

Use in vehicles that require ACEA A3/B3, A3/B4 • API SN/SM... • BMW LL-01 • MB 229.1/229.3/229.5 • Porsche A40 • Renault 0710, 0700 • VW/Audi 502.00/505.00

STOCK#	UNITS	PKG./SIZE	U.S. P.C.	CAN. P.C.
EFOQT	EA	1 Quart	11.19	14.39
EFOQT	CA	12 Quarts	127.00	163.35

### ● 5W-40 MS<sup>13</sup>

Use in vehicles that require ACEA C3 • API SN/SM/CF... • BMW LL-04 • Chrysler MS-10850 (supersedes MS-10896) • Ford WSS-M2C917-A • GM dexos2 (supersedes LL-A-025 and LL-B-025) • Renault RN0700/RN0710 • VW/Audi 502.00/505.01 • MB 229.51 • Porsche A40

STOCK#	UNITS	PKG./SIZE	U.S. P.C.	CAN. P.C.
AFLQT	EA	1 Quart	11.89	15.29
AFLQT	CA	12 Quarts	134.55	173.45
AFL1G	EA	1 Gallon	46.69	59.19
AFL1G	CA	4 Gallons	176.90	224.30

### ● 5W-40 FS<sup>13</sup>

Use in vehicles that require ACEA A3/B3, A3/B4 • API SN/SM... • BMW LL-01 • Renault 0710, 0700 • MB 229.5 • Porsche A40 • VW/Audi 502.00/505.00

STOCK#	UNITS	PKG./SIZE	U.S. P.C.	CAN. P.C.
EFMQT	EA	1 Quart	8.89	11.89
EFMQT	CA	12 Quarts	100.95	134.85
EFM1G	EA	1 Gallon	35.09	46.09
EFM1G	CA	4 Gallons	132.90	174.50

### ○ 10W-60 FS<sup>13</sup>

Use in vehicles that require API SN • ACEA A3/B3, A3/B4

STOCK#	UNITS	PKG./SIZE	U.S. P.C.
ETSQT	EA	1 Quart	9.79
ETSQT	CA	12 Quarts	110.95

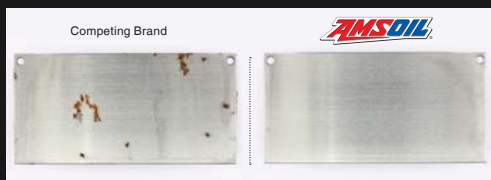
<sup>31,13</sup>See page 47 for Proposition 65 information for this product.



# Synthetic Classic/Collector Car Motor Oil

## AMSOIL Delivers Superior Rust Protection

In industry-standard testing, AMSOIL Z-ROD® completely prevented rust formation while a leading competitor did not.<sup>JJ</sup>



<sup>JJ</sup>Based upon in-house testing of AMSOIL Z-ROD 10W-40 and a leading competitor obtained on 7/25/2019 in ASTM D1748-10.





ZRT



### Z-ROD® Synthetic Motor Oil

High-zinc, high-phosphorus formulation engineered specifically for classic cars and performance vehicles.

● **10W-30**

Use in vehicles that require API SL, SJ...

STOCK#	UNITS	PKG./SIZE	U.S. P.C.	CAN. P.C.
ZRTQT	EA	1 Quart	11.59	14.99
ZRTQT	CA	12 Quarts	131.70	169.65

ZRD



● **10W-40**

Use in vehicles that require API SL, SJ...

STOCK#	UNITS	PKG./SIZE	U.S. P.C.	CAN. P.C.
ZRDQT	EA	1 Quart	11.59	14.99
ZRDQT	CA	12 Quarts	131.70	169.65

ZRF



● **20W-50**

Use in vehicles that require API SL, SJ...

STOCK#	UNITS	PKG./SIZE	U.S. P.C.	CAN. P.C.
ZRFQT	EA	1 Quart	14.09	18.09
ZRFQT	CA	12 Quarts	159.25	205.10

EAL



### Assembly Lube<sup>17</sup>

Formulated to cling to engine parts and provide exceptional wear protection in newly built or rebuilt high-performance, racing and other four-stroke engines.

STOCK#	UNITS	PKG./SIZE	U.S. P.C.	CAN. P.C.
EALTB	EA	(1) 4-oz. Tube	8.59	10.89
EALTB	CA	(12) 4-oz. Tubes	96.95	123.45

BRK



### Break-In Oil<sup>17</sup>

Allows for quick and efficient piston ring seating in new and rebuilt high-performance and racing engines.

STOCK#	UNITS	PKG./SIZE	U.S. P.C.	CAN. P.C.
BRKQT	EA	1 Quart	8.89	11.69
BRKQT	CA	12 Quarts	100.95	132.95

AMO



### Premium Protection Synthetic Motor Oil

Ideal for gasoline engines and diesel applications not equipped with diesel particulate filters (DPF), where the extra protection of a high-zinc and TBN formula is desired.

● **10W-40<sup>13</sup>**

Use in vehicles that require API CI-4+/SL... • ISO-L-EMA • Caterpillar ECF-1 • JASO MA (Motorcycle) • MAN 271/3275 • MTU Type 2 • Cummins 20071/20072/20076/20077 • Volvo VDS-2, VDS • Mack EO-M+ • ACEA A3/B3/E3/E5 • MB 228.1, 228.3, 229.1 • Detroit Diesel 93K214

STOCK#	UNITS	PKG./SIZE	U.S. P.C.	CAN. P.C.
AMOQT	EA	1 Quart	11.79	15.39
AMOQT	CA	12 Quarts	133.60	174.75
AM01G	EA	1 Gallon	46.39	-
AM01G	CA	4 Gallons	175.60	-
AM0TP	EA	(1) 2.5 Gallon	114.70	-
AM0TP	CA	(2) 2.5 Gallons	217.40	-

ARO



● **20W-50<sup>13</sup>**

Use in vehicles that require API CI-4+/SL... • ISO-L-EMA • Caterpillar ECF-1 • JASO MA (Motorcycle) • MAN 271/3275 • MTU Type 2 • Cummins 20071/20072/20076/20077 • Volvo VDS-2, VDS • Mack EO-M+ • ACEA A3/B3/E3/E5 • MB 228.1, 228.3, 229.1 • Detroit Diesel 93K214

STOCK#	UNITS	PKG./SIZE	U.S. P.C.	CAN. P.C.
AROQT	EA	1 Quart	12.29	16.19
AROQT	CA	12 Quarts	139.50	183.60
AR01G	EA	1 Gallon	48.39	-
AR01G	CA	4 Gallons	183.45	-

<sup>17,13</sup>See page 47 for Proposition 65 information for this product.

**TO ORDER: 1-800-777-7094 MONDAY – FRIDAY 7 A.M. – 7 P.M. • AMSOIL.COM**

**Free shipping on all orders of \$100 (\$130 CAN.) or more.**

Orders below \$100 (\$130 Can.) pay a flat shipping rate of \$9.99 (\$12.99 Can.).



# Synthetic Racing Oil



“AMSOIL products are the best on the market and definitely give us an added performance factor.”

– **Bryce Menzies**  
Professional Off-Road Driver





## DOMINATOR® Synthetic Racing Oil

Superior performance and maximum protection in high-performance and racing applications.

### ● 5W-20<sup>17</sup>

STOCK#	UNITS	PKG./SIZE	U.S. P.C.	CAN. P.C.
RD20QT	EA	1 Quart	14.39	18.39
RD20QT	CA	12 Quarts	163.45	208.90

### ● 10W-30<sup>17</sup>

STOCK#	UNITS	PKG./SIZE	U.S. P.C.	CAN. P.C.
RD30QT	EA	1 Quart	13.79	17.79
RD30QT	CA	12 Quarts	156.85	201.95

### ● 10W-40<sup>17</sup>

STOCK#	UNITS	PKG./SIZE	U.S. P.C.
RD40QT	EA	1 Quart	13.79
RD40QT	CA	12 Quarts	156.85

### ● 15W-50<sup>17</sup>

STOCK#	UNITS	PKG./SIZE	U.S. P.C.	CAN. P.C.
RD50QT	EA	1 Quart	14.49	18.59
RD50QT	CA	12 Quarts	164.40	210.80
RD501G	EA	1 Gallon	57.19	-
RD501G	CA	4 Gallons	216.65	-

### ● SAE 60<sup>17</sup>

STOCK#	UNITS	PKG./SIZE	U.S. P.C.	CAN. P.C.
RD60QT	EA	1 Quart	14.99	19.09
RD60QT	CA	12 Quarts	169.70	217.15

### ● 20W-50 Synthetic Competition Diesel Oil<sup>13</sup>

STOCK#	UNITS	PKG./SIZE	U.S. P.C.
DCOQT	EA	1 Quart	12.99
DCOQT	CA	12 Quarts	146.95
DCO1G	EA	1 Gallon	50.99
DCO1G	CA	4 Gallons	193.35

### ● Briggs & Stratton Synthetic 4T Racing Oil<sup>17</sup>

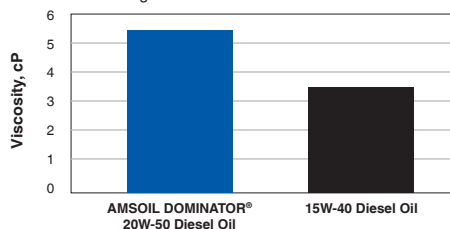
Formulated by AMSOIL specifically for stock and modified small-displacement air-cooled racing engines and recommended for any four-stroke air-cooled competition engine.

STOCK#	UNITS	PKG./SIZE	U.S. P.C.	CAN. P.C.
GBS2960	EA	1 Quart	11.25	14.95
GBS2960	CA	12 Quarts	134.90	179.40

## DOMINATOR® Protects Better

DOMINATOR Competition Diesel Oil delivers **50% more** film thickness<sup>9</sup> to withstand high cylinder pressures and protect against wear.

HIGH-TEMPERATURE/HIGH-SHEAR (HTHS) VISCOSITY  
Higher = Better Wear Protection



<sup>9</sup>Compared to the 3.5 cP PHTHS limit for SAE 15W-40.

<sup>17,13</sup>See page 47 for Proposition 65 information for this product.

# Synthetic Diesel Oil



## Keeps Turbos Clean

Signature Series Max-Duty Synthetic Diesel Oil provides protection boosted to the max, delivering up to **60% better turbo cleanliness<sup>d</sup>** and withstanding the extra demands you place on the turbo when pulling heavy loads or updating the tune for maximum horsepower.

<sup>d</sup>Based on specification standards of CAT C13 2nd Ring Top Land Carbon testing.

## AMSOIL Fights Wear

AMSOIL delivers **powerful engine protection**. How good is it? In independent testing compared to a leading brand, AMSOIL Signature Series Diesel Oil provided long-lasting wear protection, **keeping cylinder liners looking like new.**<sup>DD</sup>



<sup>DD</sup>Based on independent testing of AMSOIL 5W-30 Signature Series Max-Duty Synthetic Diesel Oil and a leading conventional 15W-40 diesel oil using the Detroit Diesel<sup>®</sup> DD13 Scuffing test for specification DFS 93K222.

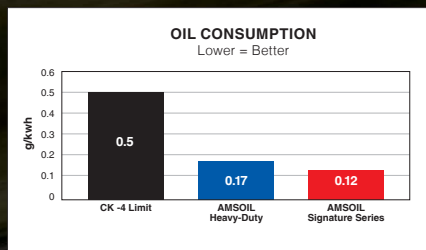
## Protects Against Rust

Signature Series Max-Duty Synthetic Diesel Oil provides up to **2X better rust protection.**<sup>K</sup>

<sup>K</sup>Based on industry standard testing using the NMMA FC-W Rust Test.

## Reduces Oil Consumption

Heavy-Duty Synthetic Diesel Oil provides up to **66% less** oil consumption, while Signature Series Max-Duty Synthetic Diesel Oil provides up to **76% less** oil consumption.<sup>L</sup>



<sup>L</sup>Than required by the API CK-4 standard in the Caterpillar-1N oil consumption test.

DHD



## Signature Series Max-Duty Synthetic Diesel Oil

The top tier of AMSOIL protection and performance for diesel engines. **Provides 6X more engine protection.<sup>1</sup>**

### ● 5W-30<sup>13</sup>

Use in vehicles that require API CK-4/SN, SN+, CJ-4... · ACEA E9, E7, E6 · Mack EOS-4.5, EO-O · DFS 93K222, DDC 93K218, 93K215, 93K214 · Caterpillar ECF-3, ECF-2, ECF-1-a · Cummins CES20086, CES20081 · Volvo VDS-4.5, VDS-4, VDS-3 · MB 228.51, 228.31 · MTU Type 3.1, 2.1, II, I · MAN 3677, 3575 · JASO DH-2 · Renault RLD-4, RLD-3 · Deutz DQC IV-10 LA, DQC III-10 LA · Scania LA-2 · Chrysler MS 10902 · Ford WSS-M2C214-B1

STOCK#	UNITS	PKG./SIZE	U.S. P.C.	CAN. P.C.
DHDQT	EA	1 Quart	11.19	14.79
DHDQT	CA	12 Quarts	126.90	167.75
DHD1G	EA	1 Gallon	43.99	57.69
DHD1G	CA	4 Gallons	166.70	218.60
DHDT	EA	(1) 2.5 Gallon	108.80	-
DHDT	CA	(2) 2.5 Gallons	206.25	-

DTT



### ● 10W-30<sup>13</sup>

Use in vehicles that require API CK-4/SN, CJ-4... · Volvo VDS4.5, VDS4, VDS3 · Mack EOS-4.5, EO-O · Renault RLD-4, RLD-3 · Cummins CES20086, CES20081 · Caterpillar ECF-2, ECF-3, ECF-1-a · DFS 93K222, DDC 93K218, 93K215, 93K214 · ACEA E9, E7 · MB 228.31 · MAN 3575 · MTU Type 2.1, II, I · JASO DH-2 · Deutz DQC III-10LA · Chrysler MS 10902 · Ford WSS-M2C171-F1

STOCK#	UNITS	PKG./SIZE	U.S. P.C.	CAN. P.C.
DTTQT	EA	1 Quart	11.19	14.79
DTTQT	CA	12 Quarts	126.90	167.75
DTT1G	EA	1 Gallon	43.99	57.69
DTT1G	CA	4 Gallons	166.70	218.60
DTTTP	EA	(1) 2.5 Gallon	108.80	-
DTTTP	CA	(2) 2.5 Gallons	206.25	-

DEO



### ● 5W-40<sup>13</sup>

Use in vehicles that require API CK-4/SN, CJ-4... · ACEA E9, E7 · Mack EOS-4.5, EO-O · DFS 93K222, DDC 93K218, 93K215, 93K214 · Caterpillar ECF-3, ECF-2, ECF-1-a · Cummins CES20086, CES20081 · Volvo VDS-4.5, VDS-4, VDS-3 · MB 228.31 · MTU Type 2.1, II, I · MAN 3575 · JASO DH-2 · Renault RLD-4, RLD-3 · Deutz DQC III-10 LA · Allison TES-439 · Scania LA-2 · Chrysler MS 10902 · Ford WSS-M2C171-F1

STOCK#	UNITS	PKG./SIZE	U.S. P.C.	CAN. P.C.
DEOQT	EA	1 Quart	11.19	14.79
DEOQT	CA	12 Quarts	126.90	167.75
DEO1G	EA	1 Gallon	43.99	57.69
DEO1G	CA	4 Gallons	166.70	218.60
DEOTP	EA	(1) 2.5 Gallon	108.80	142.45
DEOTP	CA	(2) 2.5 Gallons	206.25	270.00

DME



### ● 15W-40<sup>13</sup>

Use in vehicles that require API CK-4/SN, CJ-4... · ACEA E9, E7 · Mack EOS-4.5, EO-O · DFS 93K222, DDC 93K218, 93K215, 93K214 · Caterpillar ECF-3, ECF-2, ECF-1-a · Cummins CES20086, CES20081 · Volvo VDS-4.5, VDS-4, VDS-3 · MB 228.31 · MTU Type 2.1, II, I · MAN 3575 · JASO DH-2 · Renault RLD-4, RLD-3 · Deutz DQC III-10 LA · Allison TES-439 · Scania LA-2 · Chrysler MS 10902 · Ford WSS-M2C171-F1

STOCK#	UNITS	PKG./SIZE	U.S. P.C.	CAN. P.C.
DMEQT	EA	1 Quart	11.19	14.79
DMEQT	CA	12 Quarts	126.90	167.75
DME1G	EA	1 Gallon	43.99	57.69
DME1G	CA	4 Gallons	166.70	218.60
DMETP	EA	(1) 2.5 Gallon	108.80	142.45
DMETP	CA	(2) 2.5 Gallons	206.25	270.00

DZF



### ● 0W-40<sup>13</sup>

Delivers **4X better cold-temperature performance** when compared to SAE 15W-40 oil in ASTM D5293 Cold Cranking Viscosity test.

Use in vehicles that require API CK-4/SN, CJ-4... · ACEA E9, E7 · Mack EOS-4.5, EO-O · DDC 93K218, 93K215, 93K214 · Caterpillar ECF-3, ECF-2, ECF-1-a · Cummins CES20086, CES20081 · Volvo VDS-4.5, VDS-4, VDS-3 · MTU Type 2.1, II, I · MAN 3575 · JASO DH-2 · Renault RLD-4, RLD-3 · Deutz DQC III-10 LA · Chrysler MS 10902 · Ford WSS-M2C171-F1

STOCK#	UNITS	PKG./SIZE	U.S. P.C.	CAN. P.C.
DZFQT	EA	1 Quart	11.19	14.79
DZFQT	CA	12 Quarts	126.90	167.75
DZF1G	EA	1 Gallon	43.99	57.69
DZF1G	CA	4 Gallons	166.70	218.60

<sup>1</sup>than required by the Detroit Diesel DD13 Scuffing Test for Specification DFS 93K222 using 5W-30 as worst-case representation.

<sup>13</sup>See page 47 for Proposition 65 information for this product.





## Heavy-Duty Synthetic Diesel Oil

Outstanding protection and performance for customers seeking an upgrade over conventional, synthetic-blend and other synthetic diesel oils. **Provides 4X more engine protection.<sup>1</sup>**

### ● 10W-30<sup>13</sup>

Use in vehicles that require API CK-4, CJ-4... ACEA E9, E7 • Mack EOS-4.5, EO-O • DFS 93K222, DDC 93K218, 93K215, 93K214 • Caterpillar ECF-3, ECF-2, ECF-1-a • Cummins CES20086, CES20081 • Volvo VDS-4.5, VDS-4, VDS-3 • MB 228.31 • MTU Type 2.1, II, I • MAN 3575 • JASO DH-2 • Renault RLD-4, RLD-3 • Deutz DQC III-10 LA • Chrysler MS 10902 • Ford WSS-M2C171-F1

STOCK#	UNITS	PKG./SIZE	U.S. P.C.	CAN. P.C.
ADNQT	EA	1 Quart	7.79	9.89
ADNQT	CA	12 Quarts	88.05	112.05
ADN1G	EA	1 Gallon	28.99	—
ADN1G	CA	4 Gallons	109.80	—
ADNTP	EA	(1) 2.5 Gallon	71.30	93.60
ADNTP	CA	(2) 2.5 Gallons	135.15	177.35

### ● 5W-40<sup>13</sup>

Use in vehicles that require API CK-4, CJ-4... ACEA E9, E7 • Mack EOS-4.5, EO-O • DFS 93K222, DDC 93K218, 93K215, 93K214 • Caterpillar ECF-3, ECF-2, ECF-1-a • Cummins CES20086, CES20081 • Volvo VDS-4.5, VDS-4, VDS-3 • MB 228.31 • MTU Type 2.1, II, I • MAN 3575 • JASO DH-2 • Renault RLD-4, RLD-3 • Deutz DQC III-10 LA • Allison TES-439 • Chrysler MS 10902 • Ford WSS-M2C171-F1

STOCK#	UNITS	PKG./SIZE	U.S. P.C.	CAN. P.C.
ADOQT	EA	1 Quart	7.79	9.89
ADOQT	CA	12 Quarts	88.05	112.05
ADO1G	EA	1 Gallon	28.99	38.19
ADO1G	CA	4 Gallons	109.80	144.75
ADOTP	EA	(1) 2.5 Gallon	71.30	93.60
ADOTP	CA	(2) 2.5 Gallons	135.15	177.35

### ● 15W-40<sup>13</sup>

Use in vehicles that require API CK-4, CJ-4... ACEA E9, E7 • Mack EOS-4.5, EO-O • DFS 93K222, DDC 93K218, 93K215, 93K214 • Caterpillar ECF-3, ECF-2, ECF-1-a • Cummins CES20086, CES20081 • Volvo VDS-4.5, VDS-4, VDS-3 • MB 228.31 • MTU Type 2.1, II, I • MAN 3575 • JASO DH-2 • Renault RLD-4, RLD-3 • Deutz DQC III-10 LA • Allison TES-439 • Chrysler MS 10902 • Ford WSS-M2C171-F1

STOCK#	UNITS	PKG./SIZE	U.S. P.C.	CAN. P.C.
ADPQT	EA	1 Quart	7.79	9.89
ADPQT	CA	12 Quarts	88.05	112.05
ADP1G	EA	1 Gallon	28.99	38.19
ADP1G	CA	4 Gallons	109.80	144.75
ADPTP	EA	(1) 2.5 Gallon	71.30	93.60
ADPTP	CA	(2) 2.5 Gallons	135.15	177.35

## 100% Synthetic Diesel Oil

Provides outstanding protection, performance and fuel economy for smaller American diesel pickups, vans, cars and SUVs. **Delivers up to 6X better engine protection<sup>2</sup>** than required by a leading industry standard.<sup>2</sup>

### ● 0W-20

Use in vehicles that require GM dexosD

STOCK#	UNITS	PKG./SIZE	U.S. P.C.	CAN. P.C.
DP020QT	EA	1 Quart	10.59	14.39
DP020QT	CA	12 Quarts	120.35	162.70

### ● 5W-30

Use in vehicles that require GM dexosD, dexos2 • Chrysler MS-11106 • Ford WSSM2C214-B1 • ACEA C3

STOCK#	UNITS	PKG./SIZE	U.S. P.C.	CAN. P.C.
DP530QT	EA	1 Quart	10.09	13.59
DP530QT	CA	12 Quarts	114.70	154.50

## ● 15W-40 Synthetic Heavy Duty Diesel and Marine Oil<sup>13</sup>

Provides outstanding protection for on- and off-road diesel applications not equipped with diesel particulate filters (DPFs), where extra TBN is desired for long service intervals.

Use in vehicles that require API CI-4+/SL... • Global DHD-1 • ACEA A3/B3, E2, E3, E5, E7 • JASO DH-1 • Mack EO-M, EO-N • DDC 93K214 • Caterpillar ECF-1-a, ECF-2 • Cummins CES 20076, 20077, 20078 • Volvo VDS-3, VDS-2 • MB 228.1, 228.3, 229.1 • MAN 271, 3275 • MTU Type II

STOCK#	UNITS	PKG./SIZE	U.S. P.C.	CAN. P.C.
AMEQT	EA	1 Quart	11.79	15.49
AMEQT	CA	12 Quarts	133.10	176.00
AME1G	EA	1 Gallon	46.19	60.49
AME1G	CA	4 Gallons	174.90	229.15
AMETP	EA	(1) 2.5 Gallon	114.25	149.50
AMETP	CA	(2) 2.5 Gallons	216.50	283.40

Like Heavy Duty Diesel and Marine Oil? Try Signature Series Max-Duty 15W-40 for a serious upgrade. See page 25.

<sup>1</sup>than required by the Detroit Diesel DD13 Scuffing Test for Specification DFS 93K222 using 10W-30 as worst-case representation. <sup>2</sup>Based on third-party testing in the OM646LA cam wear test using 0W-20 as worst-case representation. <sup>13</sup>See page 47 for Proposition 65 information for this product.

# Synthetic Transmission Fluid



## Signature Series Synthetic ATF

Provides reserve protection in fleet vehicles, work trucks and other severe-service applications that quickly break down other lubricants.

### Multi-Vehicle<sup>37</sup>

Use in applications that require Allison C-4, TES-389 · BMW 7045E, 8072B, LA 2634, LT 71141 · Chrysler ATF+4, Mopar ASRC, 68089195AA, 68049954AA · Ford MERCON, MERCON V, ESP-M2C166-H, FNRS, M2C924-A, XL-12 · GM DEXRON II, DEXRON III, AutoTrak II · Honda/Acura ATF-Z1 · Hyundai/Kia SP-II, SP-III, Red-1 · IDEMITSU K17 · JASO 1A · JWS 3309, 3314, 3317 · MAN 339 Type V-1, 339 Type V-2, 339 Type Z-1, 339 Type Z-2, 339 Type Z-3, 339F · Mazda ATF-M III, ATF-MV, F-1 · Mercedes Benz 236.1, 236.2, 236.3, 236.5, 236.6, 236.7, 236.9, 236.10, 236.11, 236.81, 236.91 · Mitsubishi SP-II, SP-III, ATF-J2 · Nissan Matic-D, Matic-J, Matic-K, 402 · Saab 3309 · Shell 3403, LA 2634 · Subaru ATF, ATF-HP · Suzuki 3314, 3317 · Texaco ETL-7045E, ETL-8072B, N402 · Toyota Type T, T-II, T-III, T-IV · Voith 55.6335, 55.6336 · Volvo 97340, 97341 · VW/Audi G 052 162, G 052 990, G 055 025 · ZF TE-ML 03D, 04D, 05L, 09, 11A, 11B, 14A, 14B, 14C, 16L, 16M, 17C, 20B, 20C, 21L

STOCK#	UNITS	PKG./SIZE	U.S. P.C.	CAN. P.C.
ATFQT	EA	1 Quart	14.59	18.59
ATFQT	CA	12 Quarts	165.30	210.80
ATFPK	EA	1 Quart Easy-Pack	17.09	21.79
ATFPK	CA	12 Quart Easy-Packs	193.60	247.55
ATF1G	EA	1 Gallon	57.49	-
ATF1G	CA	4 Gallons	217.85	-
ATFTP	EA	(1) 2.5 Gallon	142.55	179.05
ATFTP	CA	(2) 2.5 Gallons	270.20	339.40

### Fuel-Efficient<sup>37</sup>

Provides the same benefits as AMSOIL Multi-Vehicle Synthetic Automatic Transmission Fluid in a fuel-efficient formulation engineered to exceed the requirements of original equipment manufacturers (OEMs) specifying low-viscosity oil.

Use in applications that require Aisin-Warner AW-1 · BMW 83 22 0 142 516, 83 22 2 152 426 · Chrysler Mopar 68157995AA, SP-IV, 68218925AB · DSIIH 6p805 · Ford MERCON LV, SP, ULV · GM DEXRON HP VI, ULV · Honda/Acura DW-1, Type 3.0 · Hyundai/Kia SP-IV, SPH-IV, SP-IV-RR, NWS-9638, SP4-M · JASO 1A-LV · JWS 3324 · Mercedes Benz 236.12, 236.14, 236.15, 236.41 · Mitsubishi SP-IV, ATF J3, ATF-PA · Nissan Matic-S, Matic-W · Saab 93 165 147 · Shell M-1375.4, M-1375.5, M-1375.6, M-L 12108 · Toyota WS · Volvo 31256774 · VW/Audi G 055 005, G 055 162, G 060 162 · ZF S671 090 255

STOCK#	UNITS	PKG./SIZE	U.S. P.C.	CAN. P.C.
ATLQT	EA	1 Quart	14.59	19.19
ATLQT	CA	12 Quarts	165.45	217.80
ATLPK	EA	1 Quart Easy-Pack	17.09	22.49
ATLPK	CA	12 Quart Easy-Packs	193.75	255.75
ATL1G	EA	1 Gallon	57.59	-
ATL1G	CA	4 Gallons	218.05	-
ATLTP	EA	(1) 2.5 Gallon	142.70	184.80
ATLTP	CA	(2) 2.5 Gallons	270.45	350.30

## OE Synthetic ATF

Resists wear and provides smooth shifts in passenger-car/light-truck automatic transmissions.

### Multi-Vehicle<sup>13</sup>

Use in applications that require Allison C-4, TES-389 · BMW 7045E, 8072B, LA 2634, LT 71141 · Chrysler ATF+4, Mopar ASRC, 68089195AA, 68049954AA · Ford MERCON, MERCON V, ESP-M2C166-H, FNRS, M2C924-A, XL-12 · GM DEXRON II, DEXRON III, AutoTrak II · Honda/Acura ATF-Z1 · Hyundai/Kia SP-II, SP-III, Red-1 · IDEMITSU K17 · JASO 1A · JWS 3309, 3314, 3317 · MAN 339 Type V-1, 339 Type V-2, 339 Type Z-1, 339 Type Z-2, 339F · Mazda ATF-M III, ATF-MV, F-1 · Mercedes Benz 236.1, 236.2, 236.3, 236.5, 236.6, 236.7, 236.9, 236.10, 236.11, 236.81, 236.91 · Mitsubishi SP-II, SP-III, ATF-J2 · Nissan Matic-D, Matic-J, Matic-K, 402 · Saab 3309 · Shell 3403, LA 2634 · Subaru ATF, ATF-HP · Suzuki 3314, 3317 · Texaco ETL-7045E, ETL-8072B, N402 · Toyota Type T, T-II, T-III, T-IV · Voith 55.6335, 55.6336 · Volvo 97340, 97341 · VW/Audi G 052 162, G 052 990, G 055 025 · ZF TE-ML 03D, 04D, 05L, 09, 11A, 11B, 14A, 14B, 16L, 17C, 20B, 21L

<sup>13</sup>AMSOIL warrants the use of this product for Chrysler ATF+4 applications above -38°F. Product does not meet the cold temperature requirement of ATF+4 at -40°F. For warranty information, visit [www.amsoil.com/warranty.aspx](http://www.amsoil.com/warranty.aspx).

STOCK#	UNITS	PKG./SIZE	U.S. P.C.	CAN. P.C.
OTFQT	EA	1 Quart	9.39	12.49
OTFQT	CA	12 Quarts	106.75	141.80
OTF1G	EA	1 Gallon	37.09	-
OTF1G	CA	4 Gallons	140.65	-
OTFTP	EA	(1) 2.5 Gallon	91.65	119.60
OTFTP	CA	(2) 2.5 Gallons	173.70	226.65

### Fuel-Efficient<sup>13</sup>

Provides the same benefits as AMSOIL OE Multi-Vehicle Synthetic Automatic Transmission Fluid in a fuel-efficient formulation engineered to exceed the requirements of original equipment manufacturers (OEMs) specifying low-viscosity oil.

Use in applications that require Aisin-Warner AW-1 · BMW 83 22 0 142 516, 83 22 2 152 426 · Chrysler Mopar 68157995AA, SP-IV, 68218925AB · DSIIH 6p805 · Ford MERCON LV · GM DEXRON VI · Honda/Acura DW-1, Type 3.0 · Hyundai/Kia SP-IV, SPH-IV, SP-IV-RR, NWS-9638, SP4-M · JASO 1A-LV · JWS 3324 · Mercedes Benz 236.12, 236.14, 236.15, 236.41 · Mitsubishi SP-IV, ATF J3, ATF-PA · Nissan Matic-S, Matic-W · Saab 93 165 147 · Shell M-1375.4, M-1375.5, M-1375.6, M-L12108 · Toyota WS · Volvo 31256774 · VW/Audi G 055 005, G 055 162, G 060 162 · ZF S671 090 255

STOCK#	UNITS	PKG./SIZE	U.S. P.C.	CAN. P.C.
OTLQT	EA	1 Quart	9.39	12.59
OTLQT	CA	12 Quarts	106.90	142.45
OTL1G	EA	1 Gallon	37.19	-
OTL1G	CA	4 Gallons	140.85	-
OTLTP	EA	(1) 2.5 Gallon	91.75	120.65
OTLTP	CA	(2) 2.5 Gallons	173.90	228.65

<sup>37,13</sup>See page 47 for Proposition 65 information for this product.

“Changed out the transmission fluid in my GMC\* 2500 with the AMSOIL OE. The difference is noticeable with how smooth the truck shifts. Great product.”

— Jimmy  
Upstate NY



**○ Synthetic CVT Fluid<sup>13</sup>**

Provides outstanding protection and performance for continuously variable transmissions (CVT) throughout original equipment manufacturer (OEM)-recommended drain intervals.

Use in belt- and chain-type CVTs that require BMW EZL 799A (8322 0 136 376 /8322 0 429 154) - Daihatsu Amix CVTF-DC, CVTF-DFE - FCA Mopar CVTF-4 (Mopar CVT 4) - Ford M2C928-A (CFT 23), WSS-M2C933-A (CFT 30, Motorcraft XT-7-OCFT), MERCON C - GM DEX-CVT, GM CVT (CVTF I/Green2) - Honda HMMF (08200-9006), HCF-2 - Hyundai/Kia SP-CVT 1 - Mazda CVTF 3320 - Mercedes Benz 236.20 (001 989 46 03) - Mitsubishi CVTF-J1, CVTF-J4 - Nissan NS-1, NS-2, NS-3 - Subaru e-CVT, i-CVT F, Lineartronic CV-30, Lineartronic CVTF/CVT-II (K0425Y0710), High Torque CVTF - Suzuki CVT Fluid Green 1, CVT Fluid Green 2 (NS-2), CVTF 3320 (TC) - Toyota/Lexus TC, FE - VW/Audi TL 52180 (G 052 180), TL 52516 (G 052 516)

STOCK#	UNITS	PKG./SIZE	U.S. P.C.	CAN. P.C.
CVTQT	EA	1 Quart	13.39	17.59
CVTQT	CA	12 Quarts	151.45	200.05
CVT1G	EA	1 Gallon	52.59	-
CVT1G	CA	4 Gallons	199.35	-

**● 100% Synthetic DCT Fluid**

Designed to protect high-tech dual-clutch transmissions during the most intense, high-heat operating conditions.

Use in applications that require BMW 83 22 2 148 578, 83 22 2 148 579, 83 22 0 440 214, 83 22 2 147 477, DCTF-1, MTF-LT-5 • Chrysler 68044345 • Citroen/Peugeot 9734.S2 • Ferrari/Shell TF DCTF-3 • Fiat BOT 341 • Ford WSS-M2C936-A, WSS-M2C200-D2, XT-11-QDC • Mercedes Benz 236.21, 236.25 • Mitsubishi Dia-Queen SSTF-1 • Nissan GT-R Transmission Oil R35 Special • Pentosin FFL-2, FFL-3, FFL-4 • Porsche 999.917.080.00, 043 207 29, 043 207 30, 000 430 20 • Renault BOT 450 • Volvo 1161838, 1161839 • VW/Audi G 052 182, G 052 529, TL 521 82

STOCK#	UNITS	PKG./SIZE	U.S. P.C.	CAN. P.C.
DCTQT	EA	1 Quart	20.79	27.79
DCTQT	CA	12 Quarts	236.30	315.90

**○ Synthetic Manual Transmission and Transaxle Gear Lube<sup>15</sup>**

Provides improved internal component protection. Formulated with extreme-pressure additives and advanced frictional qualities that provide smooth shifts while protecting gears, bearings and seals. Non-corrosive to yellow metals.

Use in applications that require API GL-4 • ZF TE-ML 02B, 17A, MB 235.5 & MAN 341-Z2 (formerly MAN 341 ML) • Synchronized manual transmissions and transaxes that require 75W-85, 75W-90 or 80W-90 API GL-4 Gear Lube • NV 4500 Transmissions • GM Part #12346190 • Chrysler Part #4874459 • Chrysler Spec MS-9070 • Certain Hyundai, Hino, Infiniti, Kia, Lexus, Mazda, Mitsubishi, Nissan, Suzuki, Toyota & Volkswagen models requiring GL-4

STOCK#	UNITS	PKG./SIZE	U.S. P.C.	CAN. P.C.
MTGQT	EA	1 Quart	17.49	22.39
MTGQT	CA	12 Quarts	198.45	254.50
MTGPK	EA	1 Quart Easy-Pack	19.09	24.49
MTGPK	CA	12 Quart Easy-Packs	217.10	278.55

**● Synthetic Synchronesh Transmission Fluid**

Specifically designed to deliver smooth shifts and superior wear protection in manual transmissions and transaxes with synchronizers.

Use in applications that require New Venture NV T350, NV1500, NV2500, NV3500, NV3550 & NV5600 • Tremec T4, T5, T16, T56, T176, TK0500, TK0600, TR3550 (GM Vehicles) & TR3450 • Honda Genuine MTF • GM Part #12345349, #12345577, #12377916 & #1052931 • Chrysler Part #4874464 & #4874465 • GM Specs #9985648, #9986105 & #9985535 • Chrysler Specs MS-9224 & MS-9417 • MTF-94 • Texaco MTK Fluids

STOCK#	UNITS	PKG./SIZE	U.S. P.C.	CAN. P.C.
MTFQT	EA	1 Quart	15.79	20.29
MTFQT	CA	12 Quarts	178.65	229.80

**○ Super Shift<sup>®</sup> Synthetic Racing Transmission Fluid<sup>17</sup>**

Formulated to prevent slippage and reduce heat in high-performance, high-horsepower vehicles.

Use in transmissions that require Allison C-4 • Ford Type F

STOCK#	UNITS	PKG./SIZE	U.S. P.C.	CAN. P.C.
ARTQT	EA	1 Quart	13.89	17.69
ARTQT	CA	12 Quarts	157.40	200.70

**● Torque-Drive<sup>®</sup> Synthetic Heavy-Duty ATF<sup>31</sup>**

Premium fluid designed for use in both on- and off-highway heavy-duty equipment.

Use in transmissions that require Allison C-4, TES-295, TES-389, TES-668; Ford MERCON® V; GM DEXRON® III; Isuzu SCS; JASO 1-A; MAN 339 Type V-1, 339 Type V-2, 339 Type Z-1, 339 Type Z-2, 339 Type Z-3, 339F; MB 236.91, 236.10; Voith 55.6335, 55.6336; Volvo 97340, 97341; ZF TE-ML 03D, TE-ML 04D, TE-ML 14A, TE-ML 14B, TE-ML 14C, TE-ML 17C, TE-ML 20B, TE-ML 20C

STOCK#	UNITS	PKG./SIZE	U.S. P.C.	CAN. P.C.
ATD1G	EA	1 Gallon	52.29	68.49
ATD1G	CA	4 Gallons	198.05	259.55
ATDTP	EA	(1) 2.5 Gallon	129.50	-
ATDTP	CA	(2) 2.5 Gallons	245.45	-

**● Synthetic Tractor Hydraulic/Transmission Oil<sup>13</sup>**

Formulated for combinations of transmissions, hydraulic systems, final drives, power take-off systems and wet brakes in heavy-duty farm and industrial equipment as well as commercial and residential lawn tractors.

Use in hydraulic systems that require SAE 5W-30

STOCK#	UNITS	PKG./SIZE	U.S. P.C.	CAN. P.C.
ATHQT	EA	1 Quart	11.39	14.49
ATHQT	CA	12 Quarts	129.50	164.60

<sup>13, 15, 17, 31</sup> See page 47 for Proposition 65 information for this product.

## Synthetic Gear Lube



“Whoever invented the easy-pack concept is a genius. Especially for servicing transfer cases and differentials. It lives up to its name. Not only an innovative oil, but innovative packaging as well.”

— **Joey**  
Calif.



### SEVERE GEAR® Synthetic Gear Lube

Specifically engineered for high-demand applications, including trailer towing, heavy hauling, 4x4 off-road driving, commercial use and racing. Flexible easy-pack helps you access tough-to-reach fill holes and eliminates the need for a pump.

#### ● 75W-90

Use in differentials that require API GL-5/MT-1 • MIL-PRF-2105E • MACK GO-J • Dana SHAES 234 (Eaton PS-037)

STOCK#	UNITS	PKG./SIZE	U.S. P.C.	CAN. P.C.
SVGQT	EA	1 Quart	17.29	21.99
SVGQT	CA	12 Quarts	196.45	250.05
SVGPK	EA	(1) Quart Easy-Pack	17.29	21.99
SVGPK	CA	(12) Quart Easy-Packs	196.45	250.05

#### ○ 80W-90<sup>13</sup>

Use in differentials that require API GL-5/MT-1 • MIL-PRF-2105E • MACK GO-J • Dana SHAES 234 (Eaton PS-037)

STOCK#	UNITS	PKG./SIZE	U.S. P.C.	CAN. P.C.
AGLQT	EA	1 Quart	13.09	16.59
AGLQT	CA	12 Quarts	148.20	188.65
AGLPK	EA	1 Quart Easy-Pack	14.69	18.69
AGLPK	CA	12 Quart Easy-Packs	166.65	212.10

#### ● 75W-110

Use in differentials that require API GL-5/MT-1 • MIL-PRF-2105E • MACK GO-J • Dana SHAES 234 (Eaton PS-037)

STOCK#	UNITS	PKG./SIZE	U.S. P.C.	CAN. P.C.
SVTQT	EA	1 Quart	17.49	22.29
SVTQT	CA	12 Quarts	198.30	253.20
SVTPK	EA	1 Quart Easy-Pack	19.19	24.49
SVTPK	CA	12 Quart Easy-Packs	217.85	278.55

#### ● 75W-140

Use in differentials that require API GL-5/MT-1 • MIL-PRF-2105E • MACK GO-J • Dana SHAES 234 (Eaton PS-037)

STOCK#	UNITS	PKG./SIZE	U.S. P.C.	CAN. P.C.
SVOQT	EA	1 Quart	18.99	24.79
SVOQT	CA	12 Quarts	216.00	281.70
SVOPK	EA	(1) Quart Easy-Pack	18.99	24.79
SVOPK	CA	(12) Quart Easy-Packs	216.00	281.70

### Easy Installation

PRODUCT	STOCK#	U.S. P.C.	CAN. P.C.
Hand Pump	G2039	10.50	13.65
Flexible Pour Spout	G1230	0.80	1.05
Nozzle Dispenser Caps (6)	G1242	1.05	1.60
FloTool Flexible Pour Spout	G3721	4.20	5.65



<sup>13,21,28</sup> See page 47 for Proposition 65 information for this product.

### ● Slip Lock® Differential Additive<sup>21</sup>

Designed to eliminate gear-housing chatter in cars, trucks and SUVs equipped with limited-slip differentials.

**Note:** AMSOIL synthetic gear lubes do not require the use of this additive. However, not all differentials respond the same and if chatter is noticed, the addition of AMSOIL Slip Lock will eliminate it.

STOCK#	UNITS	PKG./SIZE	U.S. P.C.	CAN. P.C.
ADATB	EA	(1) 4-oz. Tube	9.09	12.09
ADATB	CA	(12) 4-oz. Tubes	102.95	136.75

### SEVERE GEAR® EP Synthetic Racing Gear Lube

Engineered specifically for the demands of severe racing conditions, including off-road truck racing, rock racing, rock crawling, tractor pulling, funny car racing and dragster racing applications.

#### ● SAE 250<sup>28</sup>

Use in differentials that require API GL-5/MT-1

STOCK#	UNITS	PKG./SIZE	U.S. P.C.	CAN. P.C.
SRTQT	EA	1 Quart	18.19	23.29
SRTQT	CA	12 Quarts	206.05	264.60

### Long Life Synthetic Gear Lube

Specifically engineered for extended drain intervals up to 500,000 miles (804,672 km) as set by equipment manufacturers for over-the-road trucks and heavy equipment.

#### ● 75W-90<sup>13</sup>

Use in differentials that require API GL-5/MT-1 • MIL-PRF-2105E • MACK GO-J+ • Dana SHAES 256 (Eaton PS-163)

STOCK#	UNITS	PKG./SIZE	U.S. P.C.	CAN. P.C.
FGRQT	EA	1 Quart	14.19	17.49
FGRQT	CA	12 Quarts	160.95	198.80
FGR1G	EA	1 Gallon	56.09	—
FGR1G	CA	4 Gallons	212.50	—

# Fuel Additives



## Gasoline Stabilizer<sup>13</sup>

Helps prevent the formation of varnish and sludge in stored seasonal equipment such as snowmobiles, lawnmowers, motorcycles and boats.

STOCK#	UNITS	PKG./SIZE	U.S. P.C.	CAN. P.C.
ASTCN	EA	(1) 16-oz. Bottle	11.69	15.49
ASTCN	CA	(6) 16-oz. Bottles	66.30	87.70

## AMSOIL Fights Corrosion

AMSOIL Gasoline Stabilizer provides corrosion protection Sea Foam<sup>®</sup> Motor Treatment can't match, helping maintain power and performance and keeping metal looking like new even when subjected to salt water.\*



\*Based upon independent testing of AMSOIL Gasoline Stabilizer obtained Nov. 8, 2018 and Sea Foam Motor Treatment purchased Oct. 25, 2018 in a modified NACE TM0172 using synthetic sea water per ASTM D665 part B.

## Upper Cylinder Lubricant<sup>13</sup>

Lubricates fuel system and upper cylinders. Fights ethanol-related corrosion. Helps keep injectors clean. Bottle compatible with capless fuel systems. Use entire bottle at every fill-up.

STOCK#	UNITS	PKG./SIZE	U.S. P.C.	CAN. P.C.
UCLCN	EA	(1) 6-oz. Bottle	4.49	6.09
UCLCN	CA	(12) 6-oz. Bottles	50.45	69.00

## P.i.<sup>®</sup> Performance Improver<sup>13</sup>

Concentrated detergent aggressively cleans stubborn, power-robbing deposits from injectors, valves and the combustion chamber in passenger cars and light trucks. Bottle compatible with capless fuel systems.

STOCK#	UNITS	PKG./SIZE	U.S. P.C.	CAN. P.C.
APICN	EA	(1) 12-oz. Bottle	12.99	16.69
APICN	CA	(12) 12-oz. Bottles	147.75	189.30

<sup>13</sup>See page 47 for Proposition 65 information for this product.



### Quickshot®

Effectively addresses performance issues related to ethanol, water and dirty pump gas in two- and four-stroke gasoline-powered engines and powersports equipment fuel systems, restoring peak performance.

STOCK#	UNITS	PKG./SIZE	U.S. P.C.	CAN. P.C.
AQSCN	EA	(1) 8-oz. Bottle	9.19	12.19
AQSCN	CA	(6) 8-oz. Bottles	52.20	69.00

### DOMINATOR® Octane Boost<sup>21</sup>

Improves the performance of all two- and four-stroke gasoline-fueled engines.

STOCK#	UNITS	PKG./SIZE	U.S. P.C.	CAN. P.C.
AOBBE	EA	(1) 12-oz. Bottle	9.89	12.89
AOBBE	CA	(6) 12-oz. Bottles	55.75	72.80

### Diesel Recovery<sup>38</sup>

Emergency diesel fuel treatment that liquefies gelled diesel fuel and thaws frozen fuel filters. Keep a bottle on hand for emergencies.

STOCK#	UNITS	PKG./SIZE	U.S. P.C.	CAN. P.C.
DRCQT	EA	(1) 30-oz. Bottle	12.39	16.39
DRCQT	CA	(12) 30-oz. Bottles	140.85	185.50

### Diesel All-In-One<sup>38</sup>

Combines the superior deposit-removing properties of Diesel Injector Clean, the excellent anti-gelling properties of Diesel Cold Flow and the cetane-boosting benefits of Diesel Cetane Boost in one convenient package.

STOCK#	UNITS	PKG./SIZE	U.S. P.C.	CAN. P.C.
ADBPCN	EA	(1) 8-oz. Bottle	6.29	--
ADBPCN	CA	(6) 8-oz. Bottles	35.55	--
ADBCN	EA	(1) 16-oz. Bottle	10.59	14.19
ADBCN	CA	(12) 16-oz. Bottles	119.95	161.45
ADBHG	EA	(1) 64-oz. Bottle	37.59	--
ADBHG	CA	(6) 64-oz. Bottles	213.40	--

### Diesel Cold Flow<sup>38</sup>

Effectively modifies wax crystal formation at low temperatures to depress diesel fuel pour point and improve cold-flow filtration properties. Lowers cold filter-plugging point (CFPP) by up to 40°F (22°C) in ultra-low-sulfur diesel (ULSD).

STOCK#	UNITS	PKG./SIZE	U.S. P.C.
ADDCN	EA	(1) 16-oz. Bottle	8.89
ADDCN	CA	(12) 16-oz. Bottles	100.75

### Diesel Cetane Boost

Raises the cetane number of diesel fuel up to eight points for maximum horsepower, increased fuel economy and easier starts in all diesel engines. Diesel engines operate best on fuel with cetane values of 50 or higher. Most diesel fuel sold in North America has a cetane value of 40-45.

STOCK#	UNITS	PKG./SIZE	U.S. P.C.	CAN. P.C.
ACBCN	EA	(1) 16-oz. Bottle	9.29	12.49
ACBCN	CA	(12) 16-oz. Bottles	105.65	141.80
ACBHG	EA	(1) 64-oz. Bottle	31.59	--
ACBHG	CA	(6) 64-oz. Bottles	179.60	--

### Diesel Injector Clean<sup>19</sup>

Targets traditional nozzle deposits, combustion chamber deposits and internal diesel injector deposits found in HPCR injectors. Lubricates to reduce fuel pump and injector wear. Concentrated for rapid results, maximum horsepower and up to 8 percent increased fuel economy in engines with accumulated deposits.

STOCK#	UNITS	PKG./SIZE	U.S. P.C.	CAN. P.C.
ADFCN	EA	(1) 8-oz. Bottle	4.99	--
ADFCN	CA	(6) 8-oz. Bottles	28.25	--
ADFCN	EA	(1) 16-oz. Bottle	8.29	11.19
ADFCN	CA	(12) 16-oz. Bottles	93.70	126.60
ADFHG	EA	(1) 64-oz. Bottle	28.39	--
ADFHG	CA	(6) 64-oz. Bottles	160.95	--

### Diesel Injector Clean + Cetane Boost<sup>21</sup>

Combines the superior deposit-removing properties of Diesel Injector Clean with the cetane-boosting benefits of Diesel Cetane Boost in one convenient package.

STOCK#	UNITS	PKG./SIZE	U.S. P.C.	CAN. P.C.
ADSPCN	EA	(1) 8-oz. Bottle	5.39	--
ADSPCN	CA	(6) 8-oz. Bottles	30.15	--
ADSCN	EA	(1) 16-oz. Bottle	12.49	16.59
ADSCN	CA	(12) 16-oz. Bottles	141.30	188.05
ADSHG	EA	(1) 64-oz. Bottle	42.09	--
ADSHG	CA	(6) 64-oz. Bottles	239.40	--

<sup>21,38,19</sup> See page 47 for Proposition 65 information for this product.

TO ORDER: 1-800-777-7094 MONDAY – FRIDAY 7 A.M. – 7 P.M. • [AMSOIL.COM](http://AMSOIL.COM)

Free shipping on all orders of \$100 (\$130 CAN.) or more.

Orders below \$100 (\$130 Can.) pay a flat shipping rate of \$9.99 (\$12.99 Can.).



# Filters

## Extended Filter Life

- AMSOIL Oil Filters designated with product code EA15K are recommended for 15,000 miles (24,100 km) or one year, whichever comes first, in normal or severe service. NOTE: Change oil filter at every oil change.
- AMSOIL Oil Filters designated with product code EAO are recommended for 25,000 miles (40,200 km) or one year, whichever comes first, in normal service or 15,000 miles (24,100 km) or one year, whichever comes first, in severe service. NOTE: Change oil filter at every oil change.
- When AMSOIL Oil Filters are used with a motor oil other than AMSOIL motor oil, the filter should be changed according to the vehicle manufacturer's recommendation.

## Oil Filters

AMSOIL Oil Filters rank among the highest efficiency filters available to the auto/light-truck and powersports markets, providing a filtering efficiency of 99 percent at 20 microns. Featuring advanced full-synthetic technology, AMSOIL Oil Filters provide greater efficiency, capacity and durability than cellulose filters, extending engine and filter life and reducing engine wear. Easy-grip coating eases the job of tightening and loosening filters. Call 1-800-777-7094 (Monday-Friday, 7 a.m.- 7 p.m. Central Time) or look up your vehicle at [AMSOIL.com](http://AMSOIL.com) to determine the appropriate filter for each application. NOTE: Change oil filter at every oil change.



## Oil Filters

STOCK#	UNITS	U.S. P.C.	CAN. P.C.	STOCK#	UNITS	U.S. P.C.	CAN. P.C.
EA15K01	EA	19.70	26.15	EA15K32	EA	13.40	17.80
EA15K02	EA	14.05	18.65	EA034	EA	15.45	20.50
EA15K03	EA	12.95	17.15	EA15K35	EA	22.75	30.15
EA15K04	EA	15.30	20.35	EA15K37	EA	19.20	25.55
EA15K05	EA	9.45	12.55	EA15K38	EA	7.35	9.75
EA15K06	EA	22.15	29.35	EA15K39	EA	28.75	38.15
EA15K07	EA	8.75	11.65	EA042	EA	19.05	25.35
EA15K08	EA	23.45	31.10	EA15K43	EA	21.90	29.05
EA15K09	EA	9.85	13.10	EA15K49	EA	35.05	46.55
EA011	EA	18.05	23.95	EA15K50	EA	13.90	18.45
EA15K12	EA	17.40	23.10	EA15K51	EA	15.20	20.20
EA15K13	EA	10.35	13.75	EA052	EA	22.95	30.45
EA015	EA	19.10	25.40	EA15K53	EA	15.00	19.90
EA15K16	EA	22.60	29.95	EA15K54	EA	24.85	32.95
EA017	EA	14.80	19.65	EA055	EA	40.45	53.65
EA15K19	EA	19.25	25.55	EA059	EA	19.80	26.35
EA15K20	EA	12.80	17.00	EA064	EA	14.20	18.85
EA023	EA	14.95	19.85	EA080	EA	22.05	29.25
EA024	EA	23.25	30.85	EA15K88	EA	28.45	37.70
EA026	EA	25.70	34.10	EA098	EA	31.85	42.25
EA15K28	EA	23.60	31.30	EA099	EA	40.15	53.30
EA15K29	EA	13.40	17.80				

EAHD



## Heavy-Duty Extended-Life Oil Filters

Provide excellent 99 percent filtering efficiency at 20 microns and high contaminant capacity for heavy-duty on- and off-road diesel and gasoline applications. Provide extended service intervals that coincide with the maximum drain intervals of AMSOIL synthetic engine oils.

See [AMSOIL.com](http://AMSOIL.com) or call (715) 399-8324 (TECH) (Monday-Friday, 8 a.m. - 5 p.m. Central Time) for application information.

EABP



## Bypass Filters

High-efficiency bypass filters effectively remove minute dirt particles and soot by working in conjunction with the engine's full-flow filter and capturing contaminants that full-flow filter can't remove.

See [AMSOIL.com](http://AMSOIL.com) or call (715) 399-8324 (TECH) (Monday-Friday, 8 a.m. - 5 p.m. Central Time) for application information.



# Grease



## Synthetic Polymeric Off-Road Grease

Extreme-pressure, moly-fortified grease that provides outstanding protection for heavy-load-bearing applications, including steering knuckles, spring shackles, heavy equipment pivot joints and other components operating in high-load, low-speed conditions.

### ● Synthetic Polymeric Off-Road Grease<sup>36</sup>

Use in applications that require NLGI No. 1, 5% Moly

STOCK#	UNITS	PKG./SIZE	U.S. P.C.	CAN. P.C.
GPOR1CR	EA	(1) 15-oz. Cartridge	10.59	13.69
GPOR1CR	CA	(10) 15-oz. Cartridges	104.50	135.60

### ● Synthetic Polymeric Off-Road Grease<sup>36</sup>

Use in applications that require NLGI No. 2, 5% Moly

STOCK#	UNITS	PKG./SIZE	U.S. P.C.	CAN. P.C.
GPOR2CR	EA	(1) 15-oz. Cartridge	11.09	14.49
GPOR2CR	CA	(10) 15-oz. Cartridges	109.20	140.85

## Synthetic Polymeric Truck, Chassis/Equipment Grease

Delivers excellent wear protection and performance in severe-service, extreme-pressure environments such as axle assemblies, U-joints, pivot pins, fifth-wheel plates, steering linkages, kingpins, water pump bearings, ball joints and other greasable bearings and chassis components.

### ● Synthetic Polymeric Truck, Chassis/Equipment Grease<sup>35</sup>

Use in applications that require NLGI No. 1

STOCK#	UNITS	PKG./SIZE	U.S. P.C.	CAN. P.C.
GPTR1CR	EA	(1) 14-oz. Cartridge	8.99	11.99
GPTR1CR	CA	(10) 14-oz. Cartridges	89.10	118.70

### ● Synthetic Polymeric Truck, Chassis/Equipment Grease<sup>35</sup>

Use in applications that require NLGI No. 2

STOCK#	UNITS	PKG./SIZE	U.S. P.C.	CAN. P.C.
GPTR2CR	EA	(1) 14-oz. Cartridge	9.69	12.89
GPTR2CR	CA	(10) 14-oz. Cartridges	95.75	127.15

## DOMINATOR® Synthetic Racing Grease<sup>21</sup>

High-performance bearing and chassis lubrication for all race applications on snow, dirt, water and track. Designed for bearings that operate under high-speed, high-heat and low-temperature conditions.

Use in applications that require NLGI No. 2, GC/LB

STOCK#	UNITS	PKG./SIZE	U.S. P.C.	CAN. P.C.
GRGCR	EA	(1) 14-oz. Cartridge	13.79	17.39
GRGCR	CA	(10) 14-oz. Cartridges	134.60	169.35

## Synthetic Multi-Purpose Grease

Delivers premium wear protection for bearings, bushings, chassis lubrication and other applications.

Use in applications that require NLGI No. 2 • GC/LB

STOCK#	UNITS	PKG./SIZE	U.S. P.C.	CAN. P.C.
GLCCR	EA	(1) 14-oz. Cartridge	9.09	12.09
GLCCR	CA	(10) 14-oz. Cartridges	87.70	116.60

## Synthetic Water-Resistant Grease

Provides outstanding water-washout and spray-off resistance for applications frequently exposed to water, mud, snow or ice.

Use in applications that require NLGI No. 2 • GC/LB

STOCK#	UNITS	PKG./SIZE	U.S. P.C.	CAN. P.C.
GWRRCR	EA	(1) 14-oz. Cartridge	8.89	11.69
GWRRCR	CA	(10) 14-oz. Cartridges	85.30	112.90

## Spray Grease

Applies quickly and evenly and is ideal for greasing hard-to-reach equipment, including hinges, springs, industrial chains, latches, slides, winches and other common applications.

STOCK#	UNITS	PKG./SIZE	U.S. P.C.
GSPSC	EA	(1) 10-oz. Spray Can	9.29
GSPSC	CA	(12) 10-oz. Spray Cans	104.90

<sup>36,35,21</sup>See page 47 for Proposition 65 information for this product.

# Synthetic ATV/UTV Oil



Formulated to deliver premium protection and performance for hard-working and performance ATVs and UTVs.



### Synthetic ATV/UTV Motor Oil

Formulated to provide upgraded performance and protection for hard-working and performance ATVs and UTVs.

● 10W-30 <sup>13</sup>				
STOCK#	UNITS	PKG./SIZE	U.S. P.C.	CAN. P.C.
AUV30QT	EA	1 Quart	11.19	—
AUV30QT	CA	12 Quarts	126.45	—
● 5W-40 <sup>13</sup>				
STOCK#	UNITS	PKG./SIZE	U.S. P.C.	CAN. P.C.
AUV54QT	EA	1 Quart	12.29	16.19
AUV54QT	CA	12 Quarts	139.15	184.20
● 10W-40				
STOCK#	UNITS	PKG./SIZE	U.S. P.C.	CAN. P.C.
AUV40QT	EA	1 Quart	12.29	16.19
AUV40QT	CA	12 Quarts	139.45	184.25
○ 0W-50				
STOCK#	UNITS	PKG./SIZE	U.S. P.C.	CAN. P.C.
AUV05QT	EA	1 Quart	14.49	—
AUV05QT	CA	12 Quarts	164.75	—
● 5W-50				
STOCK#	UNITS	PKG./SIZE	U.S. P.C.	CAN. P.C.
AUV50QT	EA	1 Quart	12.59	16.09
AUV50QT	CA	12 Quarts	142.25	182.35

### ● Synthetic ATV/UTV Transmission & Differential Fluid<sup>18</sup>

Use in ATV and UTV transmissions and differentials, including those made by Polaris\*, Honda\*, Yamaha\*, Kawasaki\*, Can Am\* and Suzuki\*.

STOCK#	UNITS	PKG./SIZE	U.S. P.C.	CAN. P.C.
AUDTQT	EA	1 Quart	13.99	18.09
AUDTQT	CA	12 Quarts	159.05	205.75
AUDTPK	EA	1 Quart Easy-Pack	15.69	20.39
AUDTPK	CA	12 Quart Easy-Packs	178.45	231.05

### ● Synthetic ATV/UTV Powertrain Fluid<sup>13</sup>

Purpose-built for transmission/differentials and front drives in Polaris\* ATVs and UTVs, offering the perfect combination of protection and convenience.

STOCK#	UNITS	PKG./SIZE	U.S. P.C.	CAN. P.C.
AUPTPK	EA	1 Quart Easy-Pack	14.39	18.99
AUPTPK	CA	12 Quart Easy-Packs	163.55	215.90

### ATV/UTV Oil Change Kits for Polaris\* Vehicles

**FITMENT INFO:**  
**PK1:** ACE\* 900, GENERAL\* 1000, 2013+ RANGER\* 900 & 1000, 2013+ RZR\* 900 & 1000  
**PK2:** ATP\* 330, 500, Hawkeye\* 300, 400, Magnum\* 325, 330, 500, RANGER 400, Model years 2016 and previous - RANGER 500, Scrambler 500, 850, 1000, Sportsman\* 300, 400, 450, 500, 550, 570, 850, 1000, Trail Blazer\* 330, Trail Boss\* 325, 330, Xplorer\* 500  
**PK3:** ACE 500, 570, 2017+ RANGER 500, RANGER 570, 700, 800, RZR 570, 800, Sportsman 600, 700, 800  
**PK4:** RZR Turbo\* 1000

Contains everything needed to perform an oil change on most Polaris ATVs and UTVs using AMSOIL Synthetic 5W-50 ATV/UTV Motor Oil. See AMSOIL.com or call (715) 399-8324 (TECH) (Monday-Friday, 8 a.m. - 5 p.m. Central Time) for application information.

STOCK#	UNITS	PKG./SIZE	U.S. P.C.	CAN. P.C.
PK1	EA	1 kit	39.60	52.70
PK2	EA	1 kit	35.10	46.65
PK3	EA	1 kit	32.95	43.95
PK4	EA	1 kit	48.35	64.15

### ATV/UTV Oil Change Kits for Can-Am\* Vehicles

**FITMENT INFO:**  
**CK3:** Rotax\* 450cc (Defender,\* Outlander\*)  
**CK4:** Rotax 900 ACE\* (Maverick\* X3, DS650)  
**CK5:** Rotax V-Twin 500cc to 1,000cc (Outlander, Renegade,\* Commander,\* Defender, Maverick)  
**CK6:** Rotax 450cc (Defender, Outlander)

Contains everything needed to perform an oil change on most Can-Am ATVs and UTVs using AMSOIL Formula 4-Stroke® Powersports Synthetic Motor Oil or Synthetic 5W-40 ATV/UTV Motor Oil. See AMSOIL.com or call (715) 399-8324 (TECH) (Monday-Friday, 8 a.m. - 5 p.m. Central Time) for application information.

STOCK#	UNITS	PKG./SIZE	U.S. P.C.	CAN. P.C.
CK3	EA	1 kit	60.55	80.55
CK4	EA	1 kit	62.45	83.05
CK5	EA	1 kit	48.40	64.60
CK6	EA	1 kit	60.55	—



See p. 41 for Synthetic Chaincase & Gear Oil.  
<sup>13,18</sup>See page 47 for Proposition 65 information for this product.

**TO ORDER: 1-800-777-7094 MONDAY – FRIDAY 7 A.M. – 7 P.M. • AMSOIL.COM**  
**Free shipping on all orders of \$100 (\$130 CAN.) or more.**  
 Orders below \$100 (\$130 Can.) pay a flat shipping rate of \$9.99 (\$12.99 Can.).



# Synthetic Motorcycle Oil



# STURGIS™

The

BROWN MOTORCYCLE A

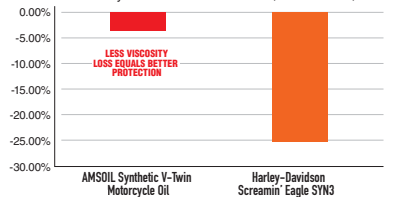


### AMSOIL Resists Viscosity Breakdown

AMSOIL V-Twin Motorcycle Oil resists viscosity breakdown **6X better** than Harley-Davidson\* SYN3\* for **improved protection** against compensator and transmission gear wear.<sup>BB</sup>

### Viscosity Breakdown

% viscosity loss in the CEC L45-KRL, ASTM D445, test



<sup>BB</sup>Based on testing of AMSOIL 20W-50 Synthetic V-Twin Motorcycle Oil purchased on 3/19/19 and Harley-Davidson Screamin' Eagle SYN3 purchased on 3/19/19 in the CEC L45-KRL, ASTM D445 test. All trademarked names and images are the property of their respective owners and may be registered marks in some countries. No affiliation or endorsement claim, express or implied, is made by their use.



## Synthetic V-Twin Motorcycle Oil

### ● 20W-50

Superior synthetic formulation provides long service life and maximum protection against engine wear in Harley-Davidson\*, Buell\* and other motorcycle engines, primaries and transmissions.

Use in bikes that require API SG, SL/CF, CG-4 • JASO MA/MA2 • ISO-L-EMA2

STOCK#	UNITS	PKG./SIZE	U.S. P.C.	CAN. P.C.
MCVQT	EA	1 Quart	12.29	16.09
MCVQT	CA	12 Quarts	139.00	182.95
MCV1G	EA	1 Gallon	48.29	63.29
MCV1G	CA	4 Gallons	182.80	239.95

### ● SAE 60

Superior synthetic formulation provides long service life and maximum protection against engine wear in big-bore, air-cooled motorcycle engines, including Harley-Davidson Panhead, Shovelhead and Knucklehead.

Use in bikes that require API SG, SL/CF, GL-1 • JASO MA/MA2 • ISO-L-EMA2

STOCK#	UNITS	PKG./SIZE	U.S. P.C.	CAN. P.C.
MCSQT	EA	1 Quart	11.79	15.19
MCSQT	CA	12 Quarts	134.10	172.20

### ● 20W-40

Superior synthetic formulation provides long service life and maximum protection against engine wear in Indian\* and Victory\* motorcycles.

Use in bikes that require API SM • JASO MA • ILSAC GF-4

STOCK#	UNITS	PKG./SIZE	U.S. P.C.	CAN. P.C.
MVIQT	EA	1 Quart	12.79	16.89
MVIQT	CA	12 Quarts	145.50	191.80

### ● 15W-60

Superior synthetic formulation provides long service life and maximum protection against engine wear in Indian and Victory motorcycles.

Use in bikes that require API SM • JASO MA • ILSAC GF-4

STOCK#	UNITS	PKG./SIZE	U.S. P.C.	CAN. P.C.
MSVQT	EA	1 Quart	14.79	19.39
MSVQT	CA	12 Quarts	167.25	219.70

## ● Synthetic V-Twin Transmission Fluid

Helps quiet V-twin transmission noise and enable smooth shifts.

STOCK#	UNITS	PKG./SIZE	U.S. P.C.	CAN. P.C.
MVTQT	EA	1 Quart	15.09	19.69
MVTQT	CA	12 Quarts	171.75	223.45

## ● Synthetic V-Twin Primary Fluid

Delivers consistent clutch feel and helps riders easily find neutral.

STOCK#	UNITS	PKG./SIZE	U.S. P.C.	CAN. P.C.
MVPQT	EA	1 Quart	12.69	16.49
MVPQT	CA	12 Quarts	144.40	186.75

## Motorcycle Octane Boost<sup>21</sup>

Increases octane up to three numbers for maximum power and efficiency in motorcycles.

STOCK#	UNITS	PKG./SIZE	U.S. P.C.	CAN. P.C.
MOBCN	EA	(1) 4-oz. Bottle	4.79	6.49
MOBCN	CA	(12) 4-oz. Bottles	54.15	73.45

## V-Twin Oil Change Kits

### FITMENT INFO:

**HDCK, HDBK:** most 1999-2016 Harley-Davidson\* motorcycles (HDCK includes chrome filter; HDBK includes black filter).

**HDMC, HDMB:** most 2017-present Harley-Davidson motorcycles (HDMC includes chrome filter; HDMB includes black filter).

Contains everything needed to perform an oil change on most Harley-Davidson motorcycles, including 20W-50 Synthetic V-Twin Motorcycle Oil, AMSOIL Motorcycle Oil Filter and O-ring.

STOCK#	UNITS	PKG./SIZE	U.S. P.C.	CAN. P.C.
HDCK	EA	1 kit	64.45	85.20
HDBK	EA	1 kit	60.75	80.80
HDMC	EA	1 kit	75.85	100.70
HDMB	EA	1 kit	72.00	95.65

## Synthetic Metric Motorcycle Oil

### ● 10W-40

Superior synthetic formulation provides long service life, smooth shifts and maximum protection against engine wear in Can-Am\*, Honda\*, Yamaha\*, Kawasaki\*, Triumph\*, Suzuki\*, BMW\* and other motorcycle engines.

Use in bikes that require API SM, SG, SL, CF • JASO MA/MA2 • ISO-L-EMA2

STOCK#	UNITS	PKG./SIZE	U.S. P.C.	CAN. P.C.
MCFQT	EA	1 Quart	12.19	16.09
MCFQT	CA	12 Quarts	138.70	182.35
MCF1G	EA	1 Gallon	48.19	62.49
MCF1G	CA	4 Gallons	182.40	236.75

### ● 10W-30

Superior synthetic formulation provides long service life, smooth shifts and maximum protection against engine wear in Honda, Yamaha, Suzuki and Kawasaki motorcycles.

Use in bikes that require API SH, SG, CF • JASO MA/MA2 • ISO-L-EMA2

STOCK#	UNITS	PKG./SIZE	U.S. P.C.	CAN. P.C.
MCTQT	EA	1 Quart	13.09	17.39
MCTQT	CA	12 Quarts	148.45	196.90

### ● 15W-50

Superior synthetic formulation provides long service life, smooth shifts and maximum protection against engine wear in Ducati\*, BMW, KTM\*, Yamaha, Triumph and Royal Enfield\* motorcycles.

Use in bikes that require API SM • JASO MA/MA2

STOCK#	UNITS	PKG./SIZE	U.S. P.C.	CAN. P.C.
MFFQT	EA	1 Quart	14.49	19.39
MFFQT	CA	12 Quarts	164.80	220.30

## Motorcycle Oil Filters

Most efficient filters available for the motorcycle and powersports market. Provide excellent 99 percent filtering efficiency at 20 microns. Available in black or chrome (as available).

See AMSOIL.com or call (715) 399-8324 (TECH) (Monday-Friday, 8 a.m. - 5 p.m. Central Time) for application information.

<sup>21</sup>See page 47 for Proposition 65 information for this product.

# Synthetic Dirt Bike Oil



## Synthetic Dirt Bike Oil

Delivers confident clutch feel, maximum horsepower and superior wear protection in all types of four-stroke dirt bikes.

### ● 10W-40

Use in bikes that require JASO MA • API SG, SJ, SH, SL

STOCK#	UNITS	PKG./SIZE	U.S. P.C.	CAN. P.C.
DB40QT	EA	1 Quart	12.69	16.69
DB40QT	CA	12 Quarts	143.60	189.30

### ● 10W-50

Use in bikes that require JASO MA • API SG, SJ, SH, SL

STOCK#	UNITS	PKG./SIZE	U.S. P.C.	CAN. P.C.
DB50QT	EA	1 Quart	14.19	18.69
DB50QT	CA	12 Quarts	161.15	212.70

### ● 10W-60

Use in bikes that require JASO MA • API SG, SJ, SH, SL

STOCK#	UNITS	PKG./SIZE	U.S. P.C.	CAN. P.C.
DB60QT	EA	1 Quart	14.69	19.39
DB60QT	CA	12 Quarts	167.00	219.70

## ○ Synthetic Dirt Bike Transmission Fluid

Use in two-stroke dirt bike transmissions and the Honda CRF

STOCK#	UNITS	PKG./SIZE	U.S. P.C.	CAN. P.C.
DBTFQT	EA	1 Quart	11.29	15.09
DBTFQT	CA	12 Quarts	128.10	170.95

## ● Shock Therapy® Suspension Fluid

Controls friction, heat, wear, foaming and scuffing in suspension components.

### ● Shock Therapy Suspension Fluid<sup>13</sup>

Lightweight #5

STOCK#	UNITS	PKG./SIZE	U.S. P.C.	CAN. P.C.
STLQT	EA	1 Quart	15.09	19.49
STLQT	CA	12 Quarts	171.65	220.95

### ● Shock Therapy Suspension Fluid<sup>13</sup>

Medium #10

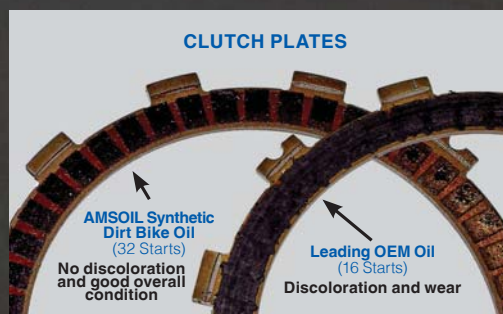
STOCK#	UNITS	PKG./SIZE	U.S. P.C.	CAN. P.C.
STMQT	EA	1 Quart	15.19	19.59
STMQT	CA	12 Quarts	172.20	222.20

“Love AMSOIL products. Something I can count on always working even when racing is unpredictable.”

– CAJO  
Alpine, Utah

## AMSOIL delivers confident clutch feel.

AMSOIL provides excellent clutch protection. How good is it? In extreme simulated-start testing, AMSOIL Dirt Bike Oil provided superior wear protection and kept clutch plates looking new.



<sup>13</sup>Based on dyno testing of a Honda CRF450 dirt bike using AMSOIL 10W-40 Synthetic Dirt Bike Oil and a leading original equipment manufacturer 10W-40 conventional dirt bike oil.

<sup>13</sup>See page 47 for Proposition 65 information for this product.

# Synthetic 4-Stroke Oil



## ● Formula 4-Stroke® Powersports Synthetic Motor Oil

Specially formulated for four-stroke recreational motors, including ATVs and snowmobiles.

Use in ATVs and snowmobiles that require API SG, SJ, SL/CF • JASO MA/MA2 • ISO-L-EMA2

STOCK#	UNITS	PKG./SIZE	U.S. P.C.	CAN. P.C.
AFFQT	EA	1 Quart	13.29	17.49
AFFQT	CA	12 Quarts	150.80	198.80

## Synthetic Small-Engine Oil

Helps preserve engine power, reduce oil consumption and reduce maintenance in small engines used in severe service.

Use in equipment that requires API SL, SJ, SH, SG • API CF, CD • JASO MA/MA2



### ○ 5W-30

STOCK#	UNITS	PKG./SIZE	U.S. P.C.	CAN. P.C.
AESQT	EA	1 Quart	9.49	12.49
AESQT	CA	12 Quarts	107.15	141.80

### ● 10W-30

STOCK#	UNITS	PKG./SIZE	U.S. P.C.	CAN. P.C.
ASEQT	EA	1 Quart	9.49	12.49
ASEQT	CA	12 Quarts	107.15	141.80
ASE1G	EA	1 Gallon	37.09	—
ASE1G	CA	4 Gallons	140.35	—

### ● 10W-40

STOCK#	UNITS	PKG./SIZE	U.S. P.C.	CAN. P.C.
ASFQT	EA	1 Quart	9.99	13.79
ASFQT	CA	12 Quarts	113.60	156.40
ASF1G	EA	1 Gallon	39.29	—
ASF1G	CA	4 Gallons	148.90	—

### ● 15W-50

STOCK#	UNITS	PKG./SIZE	U.S. P.C.	CAN. P.C.
SEFQT	EA	1 Quart	8.99	11.79
SEFQT	CA	12 Quarts	101.30	133.60

## ● 20W-50 Zero-Turn Synthetic Hydrostatic Transmission Fluid<sup>13</sup>

Fights wear to deliver smooth control and responsive power in zero-turn hydrostatic mowers.

Use in hydrostatic transmissions that require 15W-50 or 20W-50 oil recommended for API SM, SL, SJ, SH or SG.

STOCK#	UNITS	PKG./SIZE	U.S. P.C.	CAN. P.C.
AHFQT	EA	1 Quart	11.99	16.39
AHFQT	CA	12 Quarts	135.45	185.50
AHF1G	EA	1 Gallon	46.99	—
AHF1G	CA	4 Gallons	178.10	—

## ● Formula 4-Stroke® Synthetic Scooter Oil<sup>13</sup>

Formulated specifically to meet the special needs of today's high-tech air- and water-cooled four-stroke motorized scooters.

Use in scooters that require API SG, SL/CF • JASO MA/MA2 • ISO-L-EMA2

STOCK#	UNITS	PKG./SIZE	U.S. P.C.
ASOQT	EA	1 Quart	10.89
ASOQT	CA	12 Quarts	123.55

## ● Semi-Synthetic Bar and Chain Oil<sup>17</sup>

Delivers excellent lubrication and protection, helping extend the life of bar and chain applications.

STOCK#	UNITS	PKG./SIZE	U.S. P.C.	CAN. P.C.
ABCQT	EA	1 Quart	6.59	8.69
ABCQT	CA	12 Quarts	74.10	98.75
ABC1G	EA	1 Gallon	25.59	—
ABC1G	CA	4 Gallons	96.70	—



<sup>13,17</sup>See page 47 for Proposition 65 information for this product.

## Commercial-Grade Synthetic Oil for Small Engines

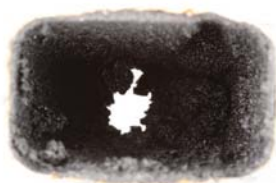
AMSOIL Synthetic Small-Engine Oil provides excellent all-season protection and performance in a large variety of small engines:

- Zero-Turn Mowers
- Riding and Push Lawnmowers
- Snowblowers
- Generators
- Pumps
- Welders
- Skid-Steers
- Compressors
- And More

# Synthetic 2-Stroke Oil



**SABER Professional Fights Carbon**  
Equipment using SABER Professional was **96% carbon-free<sup>N</sup>**.



Leading OEM oil after 300 hours



AMSOIL SABER Professional after 300 hours

<sup>N</sup>Based on spark-arrestor testing.



## Runs On Freedom™ Limited Snowmobile Warranty

Use AMSOIL INTERCEPTOR® Synthetic 2-Stroke Oil exclusively in your current-model-year or newer sled and we'll cover engine repairs in the unlikely event of any engine breakdown for up to two years/5,000 miles/8,000 km.\*

\*To get details and register, visit [AMSOIL.com/rof warranty](http://AMSOIL.com/rof warranty).





AIO



### ● Synthetic 2-Stroke Injector Oil<sup>13</sup>

High-quality, cost-effective oil for the severe operating conditions of two-stroke snowmobiles and outboard motors. Ideal for vintage sleds.

Use in snowmobiles and boat motors that require TC-W3 • API TC

STOCK#	UNITS	PKG./SIZE	U.S. P.C.	CAN. P.C.
AIOQT	EA	1 Quart	9.79	12.89
AIOQT	CA	12 Quarts	110.65	146.25
AIO1G	EA	1 Gallon	38.49	49.89
AIO1G	CA	4 Gallons	145.85	189.10

AIT



### ● INTERCEPTOR<sup>®</sup> Synthetic 2-Stroke Oil<sup>13</sup>

Purpose-built, best-in-class performance for piston protection, cold-temperature pumpability and exhaust power valve cleanliness. Use in snowmobiles, including those made by Ski-Doo<sup>®</sup>, Polaris<sup>®</sup> and Arctic Cat<sup>®</sup>.

Use in snowmobiles that require API TC

STOCK#	UNITS	PKG./SIZE	U.S. P.C.	CAN. P.C.
AITQT	EA	1 Quart	12.39	16.39
AITQT	CA	12 Quarts	140.80	185.50
AIT1G	EA	1 Gallon	48.89	63.19
AIT1G	CA	4 Gallons	185.20	239.50

TDR



### ● DOMINATOR<sup>®</sup> Synthetic 2-Stroke Racing Oil<sup>13</sup>

Delivers outstanding wear protection in high-horsepower and modified racing applications, including snowmobiles, motorcycles, ATVs, personal watercraft, go-carts and outboard motors.

Use in snowmobiles that require API TC

STOCK#	UNITS	PKG./SIZE	U.S. P.C.	CAN. P.C.
TDRQT	EA	1 Quart	13.39	17.59
TDRQT	CA	12 Quarts	151.30	199.40
TDR1G	EA	1 Gallon	52.59	67.79
TDR1G	CA	4 Gallons	199.20	257.00

ATP



### ● SABER<sup>®</sup> Professional Synthetic 2-Stroke Oil<sup>13</sup>

Provides superior protection for handheld two-stroke equipment at any mix ratio up to 100:1, offering the ultimate in convenience.

Use in power equipment that requires ISO-L-EGD • API TC • JASO FD

STOCK#	UNITS	PKG./SIZE	U.S. P.C.	CAN. P.C.
ATPPK	EA	(1) 1.5-oz. Pillow Pack	1.39	-
ATPPK	CA	(48) 1.5-oz. Pillow Packs	59.95	-
ATPTS	EA	(1) 2.6-oz. Bottle	2.29	-
ATPTS	CA	(12) 2.6-oz. Bottles	25.20	-
ATPBA	EA	(1) 3.5-oz. Bottle	2.49	-
ATPBA	CA	(12) 3.5-oz. Bottles	27.85	-
ATPSF	EA	(1) 6.4-oz. Bottle	3.89	5.49
ATPSF	CA	(12) 6.4-oz. Bottles	44.35	61.45
ATPBC	EA	(1) 8-oz. Bottle	4.79	6.09
ATPBC	CA	(12) 8-oz. Bottles	54.35	68.40
ATPTE	EA	(1) 12.8-oz. Bottle	7.49	-
ATPTE	CA	(12) 12.8-oz. Bottles	84.80	-
ATPQT	EA	1 Quart	13.29	16.89
ATPQT	CA	12 Quarts	150.15	191.20
ATP1G	EA	1 Gallon	52.19	-
ATP1G	CA	4 Gallons	197.65	-

TCC



### ○ Synthetic Chaincase & Gear Oil

Superior protection for enclosed chains and gears found in snowmobiles, ATVs, UTVs and general equipment.

STOCK#	UNITS	PKG./SIZE	U.S. P.C.	CAN. P.C.
TCCCN	EA	(1) 16-oz. Bottle	10.59	13.89
TCCCN	CA	(6) 16-oz. Bottles	60.05	78.85

<sup>13</sup>See page 47 for Proposition 65 information for this product.

TO ORDER: 1-800-777-7094 MONDAY – FRIDAY 7 A.M. – 7 P.M. • [AMSOIL.COM](http://AMSOIL.COM)

Free shipping on all orders of \$100 (\$130 CAN.) or more.

Orders below \$100 (\$130 Can.) pay a flat shipping rate of \$9.99 (\$12.99 Can.).



SPRING 2024 | 41

# Synthetic Marine Oil



“Switched my marine big block over to AMSOIL 25W-40 and have seen better oil pressure and increased performance over 30W oil. I’ll definitely use this oil again.”

— **Runky**  
Portsmouth, RI



WCT



WCF



WCM



HPM



ATO



AGM



## Synthetic Marine Engine Oil

Formulated specifically for use in four-stroke gasoline-fueled engines used in marine applications.

### 10W-30<sup>13</sup>

Use in boat motors that require API SM • NMMA FC-W Catalyst Compatible (Registration #FC-00833T) • JASO MA

STOCK#	UNITS	PKG./SIZE	U.S. P.C.	CAN. P.C.
WCTQT	EA	1 Quart	11.39	14.99
WCTQT	CA	12 Quarts	128.90	170.30

### 10W-40<sup>13</sup>

Use in boat motors that require API SM • NMMA FC-W Catalyst Compatible (Registration #FC-00850T) • JASO MA

STOCK#	UNITS	PKG./SIZE	U.S. P.C.	CAN. P.C.
WCFQT	EA	1 Quart	12.39	16.39
WCFQT	CA	12 Quarts	140.05	185.50

### 25W-40 (Synthetic Blend)<sup>23</sup>

Use in boat motors that require API SM • NMMA FC-W Catalyst Compatible (Registration #FC-11825T) • JASO MA

STOCK#	UNITS	PKG./SIZE	U.S. P.C.	CAN. P.C.
WCMQT	EA	1 Quart	9.59	12.99
WCMQT	CA	12 Quarts	109.10	147.50

## HP Marine® Synthetic 2-Stroke Oil<sup>13</sup>

Prevents piston skirt scuffing, cylinder bore scuffing and ring sticking in all two-stroke outboard motors, personal watercraft and anywhere NMMA TC-W3 and API-TC oils are specified.

Use in boat motors that require TC-W3

STOCK#	UNITS	PKG./SIZE	U.S. P.C.	CAN. P.C.
HPMQT	EA	1 Quart	10.69	13.99
HPMQT	CA	12 Quarts	120.75	158.90
HPM1G	EA	1 Gallon	41.89	53.89
HPM1G	CA	4 Gallons	158.50	204.25

## Outboard 100:1 Pre-Mix Synthetic 2-Stroke Oil<sup>13</sup>

Contains a heavy dose of low-temperature dispersant additives that excel at reducing varnish and carbon deposit formation in water-cooled outboard motors.

Use in boat motors that require TC-W3

STOCK#	UNITS	PKG./SIZE	U.S. P.C.
ATOBC	EA	(1) 8-oz. Bottle	5.09
ATOBC	CA	(12) 8-oz. Bottles	57.50
ATOQT	EA	1 Quart	14.79
ATOQT	CA	12 Quarts	168.05

## Universal Synthetic Marine Gear Lube<sup>13</sup>

Resists foam and retains extreme-pressure qualities in outboard lower units, stern drives, V-drives, bow and tunnel thrusters and marine transmissions. Delivers advanced outboard protection against power loss and gear wear, even with up to 15 percent water contamination.<sup>v</sup> Choose the easy-pack for fast, easy installation.

Use in applications that require GL-5, GL-4

STOCK#	UNITS	PKG./SIZE	U.S. P.C.	CAN. P.C.
AGMTB	EA	(1) 10-oz. Tube	7.39	9.69
AGMTB	CA	(6) 10-oz. Tubes	41.55	54.80
AGMQT	EA	1 Quart	13.39	17.69
AGMQT	CA	12 Quarts	152.40	201.30
AGMPK	EA	1 Quart Easy-Pack	15.09	19.99
AGMPK	CA	12 Quart Easy-Packs	171.65	226.65

## Marine Gear Lube Pump<sup>27</sup>

Specifically designed to ease installation and reduce mess when servicing lower units. Eliminate the need for a pump, save money and reduce the mess by choosing the easy-pack.

STOCK#	U.S. P.C.	CAN. P.C.
G3456	10.10	13.40

<sup>13,23,27</sup> See page 47 for Proposition 65 information for this product.

<sup>v</sup> Based upon AMSOIL testing of AMSOIL Synthetic Marine Gear Lube 75W-90 in ASTM 3233 and ASTM D892.

# Cleaners and Protectants



Protection and Dependability  
for Generations



## Chain Lube

Provides outstanding protection against wear and corrosion. Helps extend chain life. Does not attract dirt and does not fling off. Fast-drying.

STOCK#	UNITS	PKG./SIZE	U.S. P.C.
ACL4SC	EA	(1) 4.5-oz. Spray Can	6.29
ACL4SC	CA	(12) 4.5-oz. Spray Cans	71.35
ACLSC	EA	(1) 11-oz. Spray Can	11.89
ACLSC	CA	(6) 11-oz. Spray Cans	67.30

## Engine Fogging Oil<sup>13</sup>

Helps prevent corrosion and dry starts to internal engine components found in outboard motors, lawn and garden equipment, motorcycles, snowmobiles, ATVs, motor homes and generators during storage or long periods of inactivity.

STOCK#	UNITS	PKG./SIZE	U.S. P.C.
FOGSC	EA	(1) 12-oz. Aerosol Can	9.69
FOGSC	CA	(12) 12-oz. Aerosol Cans	109.65

## Power Foam<sup>21</sup>

Improves starting and performance by cleaning dirty intake systems and spark plugs; freeing sticky valves and removing gum, varnish and carbon deposits.

STOCK#	UNITS	PKG./SIZE	U.S. P.C.
APFSC	EA	(1) 18-oz. Spray Can	9.79
APFSC	CA	(12) 18-oz. Spray Cans	111.45

## Heavy-Duty Degreaser

Formulated with powerful and fast-acting solvents, attacking petroleum-based grime on a molecular level to loosen its hold on metal, concrete and other surfaces.

STOCK#	UNITS	PKG./SIZE	U.S. P.C.
ADGSC	EA	(1) 15-oz. Spray Can	12.69
ADGSC	CA	(12) 15-oz. Spray Cans	144.35

## Silicone Spray<sup>13</sup>

Perfect for lubricating or protecting rubber, nylon, plastics, upholstery, vinyl, wood, cardboard or fiberglass. Also excellent for waterproofing leather products. Hundreds of household uses.

STOCK#	UNITS	PKG./SIZE	U.S. P.C.
ALSSP	EA	(1) 10-oz. Spray Can	9.19
ALSSP	CA	(12) 10-oz. Spray Cans	104.00

<sup>13,21</sup>See page 47 for Proposition 65 information for this product.



### Mudslinger®

Provides a protective layer of armor against the accumulation of mud, dirt and snow on ATVs, UTVs and dirt bikes, easing clean-up. Restores color and luster.

STOCK#	UNITS	PKG./SIZE	U.S. P.C.
AMSSC	EA	(1) 12-oz. Spray Can	9.89
AMSSC	CA	(12) 12-oz. Spray Cans	111.50

### Engine Degreaser

Effectively cleans engine surfaces by cutting through grease, oil and grime.

STOCK#	UNITS	PKG./SIZE	U.S. P.C.
AEDSC	EA	(1) 15-oz. Spray Can	8.19
AEDSC	CA	(12) 15-oz. Spray Cans	92.75

### Glass Cleaner

Cuts through grease and grime faster than other leading glass cleaners, stays where you spray it and leaves no streaks.

STOCK#	UNITS	PKG./SIZE	U.S. P.C.
AGCSC	EA	(1) 19-oz. Spray Can	4.69
AGCSC	CA	(12) 19-oz. Spray Cans	52.40

### Metal Protector

Displaces water, lubricates, penetrates and protects metal surfaces from corrosion, including hinges, squeaky mechanical objects, electrical systems and more.

STOCK#	UNITS	PKG./SIZE	U.S. P.C.	CAN. P.C.
AMP4SC	EA	(1) 4-oz. Spray Can	6.29	—
AMP4SC	CA	(12) 4-oz. Spray Cans	71.15	—
AMPSC	EA	(1) 8.75-oz. Spray Can	8.19	8.49
AMPSC	CA	(12) 8.75-oz. Spray Cans	92.75	95.60

### Heavy-Duty Metal Protector<sup>13</sup>

Penetrates and adheres to metal surfaces, leaving a long-lasting coating that protects against the damaging effects of salt, moisture or chemical corrosion.

STOCK#	UNITS	PKG./SIZE	U.S. P.C.
AMHSC	EA	(1) 15-oz. Spray Can	11.69
AMHSC	CA	(12) 15-oz. Spray Cans	132.65

<sup>13</sup>See page 47 for Proposition 65 information for this product.

### Engine and Transmission Flush

Helps restore operating efficiency, increase fuel economy and reduce emissions in gasoline and diesel engines and automatic transmissions.

STOCK#	UNITS	PKG./SIZE	U.S. P.C.	CAN. P.C.
FLSHCN	EA	(1) 16-oz. Bottle	11.29	14.69
FLSHCN	CA	(12) 16-oz. Bottles	128.05	167.15

### Miracle Wash® Waterless Wash & Wax

Unique dry car wash and polish delivers outstanding performance and quick, easy and economical spray application. No water required.

STOCK#	UNITS	PKG./SIZE	U.S. P.C.
AMWSC	EA	(1) 13-oz. Spray Can	10.29
AMWSC	CA	(12) 13-oz. Spray Cans	116.20

### Synthetic Firearm Lubricant and Protectant

Effectively lubricates and protects firearms, helping extend life and prevent blockage, jams and wear. Outstanding protection and performance in both hot and cold climates. Specifically formulated for firearms, offering superior performance over multi-purpose products.

STOCK#	UNITS	PKG./SIZE	U.S. P.C.	CAN. P.C.
FLPBA	EA	(1) 4-oz. Bottle	8.99	12.09
FLPBA	CA	(12) 4-oz. Bottles	101.75	137.40
FLPSC	EA	(1) 5-oz. Spray Can	11.09	—
FLPSC	CA	(12) 5-oz. Spray Cans	125.55	—

### Firearm Cleaner and Protectant

Penetrates deep into hard-to-reach components, effectively cleaning fouling and powder residue from all firearm surfaces, safely protecting them for storage, reducing jamming and increasing reliability. Protects against corrosion, allowing for safe storage and preserving performance, reliability and value.

STOCK#	UNITS	PKG./SIZE	U.S. P.C.
FCPSC	EA	(1) 5-oz. Spray Can	7.59
FCPSC	CA	(12) 5-oz. Spray Cans	86.35
FCPCN	EA	(1) 8-oz. Bottle	10.19
FCPCN	CA	(12) 8-oz. Bottles	114.95



## ● Heavy-Duty Antifreeze & Coolant<sup>29</sup>

Provides superior heat transfer and excellent protection against corrosion, cylinder-liner cavitation, freezing and boilover. Protection up to 1,000,000 miles (1,609,344 km), 20,000 hours or 8 years, whichever comes first. Pre-mixed formula.

Use in applications requiring any of the following specifications: STM D3306, D6210, D7583, D7820 • TMC RP329B, TMC RP338 • AS/INZS 2108.2004 Type A

Suitable for use with the following: Case New Holland • Cummins 14603 • Cummins 3666132 • DDC 7SE 298, 93K217 • Freightliner 48-22880 • GM Heavy Truck • International Truck and Engine / Navistar CEMS B-1 Type III-A • JIS K2234 • MAN 324 NF • MB DBL 7700 • MTU MTL 5048 • Kenworth RO26-170-97 • Mack 014GS17004, 014GS17009 • PACCAR CS0185 • DAF MAT 74002 • Peterbilt 8502.002 • Scania TB1451 • Volvo Heavy Truck

STOCK#	UNITS	PKG./SIZE	U.S. P.C.	CAN. P.C.
ANTHD1G	EA	1 Gallon	20.59	26.79
ANTHD1G	CA	4 Gallons	77.90	101.50

## ○ Propylene Glycol Antifreeze & Coolant

All-Climate protection for up to 150,000 miles (241,400 km) or 5 years, whichever comes first, in passenger cars and light trucks. Protection up to 1,000,000 miles (1,609,344 km), 20,000 hours or 8 years, whichever comes first, in heavy-duty applications. Concentrated formula.

Use in applications requiring any of the following specifications: ASTM D3306, D6210, D7583, D7820 • TMC RP329B, TMC RP338 • AS/INZS 2108.2004 Type A

Suitable for use with the following: Case New Holland • Cummins 14603 • Cummins 3666132 • DDC 7SE 298, 93K217 • Freightliner 48-22880 • GM Heavy Truck • International Truck and Engine / Navistar CEMS B-1 Type III-A • JIS K2234 • MAN 324 NF • MB DBL 7700 • MTU MTL 5048 • Kenworth RO26-170-97 • Mack 014GS17004, 014GS17009 • PACCAR CS0185 • DAF MAT 74002 • Peterbilt 8502.002 • Scania TB1451 • Volvo Heavy Truck

STOCK#	UNITS	PKG./SIZE	U.S. P.C.	CAN. P.C.
ANT1G	EA	1 Gallon	44.99	59.09
ANT1G	CA	4 Gallons	170.50	223.90

## ● Passenger Car/Light Truck Antifreeze & Coolant<sup>29</sup>

Engineered to exceed original equipment manufacturer (OEM) requirements for up to 150,000 miles (241,400 km) or 5 years, whichever comes first, in passenger cars and light trucks. Pre-mixed formula.

STOCK#	UNITS	PKG./SIZE	U.S. P.C.	CAN. P.C.
ANTPC1G	EA	1 Gallon	19.29	25.09
ANTPC1G	CA	4 Gallons	73.05	94.95

## Fluid Extraction Pump

STOCK#	U.S. P.C.	CAN. P.C.
G2576	15.75	21.00

Aids in the removal of old fluids when servicing vehicles.



<sup>29</sup>15.13 See page 47 for Proposition 65 information for this product.



## ● Powersports Antifreeze & Coolant<sup>15</sup>

Advanced design helps control operating temperature in hot-running, high-revving powersports applications. Extended-life formula provides all-season protection for up to five years.

STOCK#	UNITS	PKG./SIZE	U.S. P.C.	CAN. P.C.
PSAFQT	EA	1 Quart	7.59	10.19
PSAFQT	CA	12 Quarts	85.50	115.25

## ● DOMINATOR® Coolant Boost

Helps reduce engine temperatures, increase horsepower, promote faster engine warm-up times and reduce radiator and engine corrosion in racing and passenger vehicles.

Warm up your car 54% faster. See the Coolant Boost product page at [AMSOIL.com](http://AMSOIL.com) for details.

STOCK#	UNITS	PKG./SIZE	U.S. P.C.	CAN. P.C.
RDCBCN	EA	(1) 16-oz. Bottle	11.49	15.49
RDCBCN	CA	(6) 16-oz. Bottles	65.50	87.70

## ○ Synthetic Air Tool Oil<sup>13</sup>

Effectively lubricates rotary and piston-type air-tool bearings and motors, while managing moisture and conditioning rubber and plastic seals and O-rings.

STOCK#	UNITS	PKG./SIZE	U.S. P.C.	CAN. P.C.
AIRBA	EA	(1) 4-oz. Bottle	3.99	5.49
AIRBA	CA	(12) 4-oz. Bottles	45.45	62.05

## ● Multi-Vehicle Synthetic Power Steering Fluid<sup>13</sup>

Provides excellent wear protection, long component life and quiet operation in most passenger cars and light trucks.

Use in applications that require American Motor Corporation C 4124; 4634 • BMW 82 11 0 148 132; 83 29 0 429 576; 81 22 1 468 879 & 82 11 1 468 041 • Chrysler MS-1872; MS-5931, MS-9602 & MS-11655 • Ford M2C138-CJ; ESW-M2C128-C&D; M2C195-A; M2C204-A & M2C33-F • GM/Saginaw PSF 9985010; 9985835; 89021184 & 1050017 • Hyundai/Kia PSF-3; PSF-4 & PSF 00232-19017 • Mercedes Benz 236.3; 345.0; 001 989 24 03 10; 001 989 24 03 12 & Q 1 32 0001 • Mitsubishi Diamond SP III & PS Fluid • Navistar TMS 6810 • Nissan PSF-II • Porsche 000 043 206 56 • Saab 93160548; (45) 30 09 800 & 30 32 380 • Subaru K0209A0080 • Toyota PSF Type EH; P/N 008886-01 • Volvo 1161529 & 30741424 • VW/Audi TL-52146; G002000; G 004 000 M2; G 004 000 M7 & G 004 000 M8

STOCK#	UNITS	PKG./SIZE	U.S. P.C.	CAN. P.C.
PSFCN	EA	(1) 16-oz. Bottle	8.39	10.79
PSFCN	CA	(12) 16-oz. Bottles	94.70	122.20



### DOT 3 & 4 Synthetic Brake Fluid<sup>33</sup>

High-performance brake fluid specially designed as a multi-use product for passenger-car, light-truck and powersports applications.

Use in equipment requiring a DOT 3, 4 or 5.1 brake fluid.

STOCK#	UNITS	PKG./SIZE	U.S. P.C.
BFLVCN	EA	(1) 12-oz. Bottle	6.69
BFLVCN	CA	(12) 12-oz. Bottles	75.95

### DOMINATOR® DOT 4 Synthetic Racing Brake Fluid<sup>10</sup>

High boiling point brake fluid engineered to resist brake fade and vapor lock during intense racing applications.

Use in racing equipment requiring a DOT 4 brake fluid.

STOCK#	UNITS	PKG./SIZE	U.S. P.C.
BFRCN	EA	(1) 12-oz. Bottle	12.49
BFRCN	CA	(12) 12-oz. Bottles	141.25

### Brake & Parts Cleaner<sup>32</sup>

Professional-strength parts cleaner that quickly removes oil, grease, brake fluid and other contaminants from brake parts and other automotive components.

STOCK#	UNITS	PKG./SIZE	U.S. P.C.
BPCSC	EA	(1) 19-oz. Spray Can	6.09
BPCSC	CA	(12) 19-oz. Spray Cans	68.35

### Synthetic Compressor Oil

Superior protection for rotary screw, rotary vane, reciprocating and other compressor applications.

#### ● Synthetic Compressor Oil<sup>13</sup>

Use in compressors that require ISO 46 • SAE 20

STOCK#	UNITS	PKG./SIZE	U.S. P.C.	CAN. P.C.
PCIQT	EA	1 Quart	13.29	16.89
PCIQT	CA	12 Quarts	150.50	191.20

#### ● Synthetic Compressor Oil

Use in compressors that require ISO 100 • SAE 30/40

STOCK#	UNITS	PKG./SIZE	U.S. P.C.	CAN. P.C.
PCKQT	EA	1 Quart	14.29	18.09
PCKQT	CA	12 Quarts	161.95	205.75

<sup>33</sup>10.32.13 See page 47 for Proposition 65 information for this product.

## CALIFORNIA PROPOSITION 65 WARNING STATEMENTS

- <sup>10</sup> **⚠️ WARNING:** This product can expose you to 2,2'-Iminodiethanol, which is known to the State of California to cause cancer, and Ethanediol, which is known to the State of California to cause birth defects or other reproductive harm. For more information go to [www.P65Warnings.ca.gov](http://www.P65Warnings.ca.gov).
- <sup>13</sup> **⚠️ WARNING:** This product can expose you to Benzene, which is known to the State of California to cause cancer and birth defects or other reproductive harm. For more information go to [www.P65Warnings.ca.gov](http://www.P65Warnings.ca.gov).
- <sup>15</sup> **⚠️ WARNING:** This product can expose you to Ethanediol, which is known to the State of California to cause birth defects or other reproductive harm. For more information go to [www.P65Warnings.ca.gov](http://www.P65Warnings.ca.gov).
- <sup>17</sup> **⚠️ WARNING:** This product can expose you to Ethylbenzene, which is known to the State of California to cause cancer. For more information go to [www.P65Warnings.ca.gov](http://www.P65Warnings.ca.gov).
- <sup>18</sup> **⚠️ WARNING:** This product can expose you to Ethylene oxide, which is known to the State of California to cause cancer and birth defects or other reproductive harm. For more information go to [www.P65Warnings.ca.gov](http://www.P65Warnings.ca.gov).
- <sup>19</sup> **⚠️ WARNING:** This product can expose you to Naphthalene, which is known to the State of California to cause cancer, and Methanol which is known to the State of California to cause birth defects or other reproductive harm. For more information go to [www.P65Warnings.ca.gov](http://www.P65Warnings.ca.gov).
- <sup>21</sup> **⚠️ WARNING:** This product can expose you to Naphthalene, which is known to the State of California to cause cancer. For more information go to [www.P65Warnings.ca.gov](http://www.P65Warnings.ca.gov).
- <sup>23</sup> **⚠️ WARNING:** This product can expose you to Toluene, which is known to the State of California to cause birth defects or other reproductive harm. For more information go to [www.P65Warnings.ca.gov](http://www.P65Warnings.ca.gov).
- <sup>25</sup> **⚠️ WARNING:** This product can expose you to Ethylbenzene, which is known to the State of California to cause cancer, and Methanol which is known to the State of California to cause birth defects or other reproductive harm. For more information go to [www.P65Warnings.ca.gov](http://www.P65Warnings.ca.gov).
- <sup>26</sup> **⚠️ WARNING:** This product can expose you to n-Hexane, which is known to the State of California to cause birth defects or other reproductive harm. For more information go to [www.P65Warnings.ca.gov](http://www.P65Warnings.ca.gov).
- <sup>27</sup> **⚠️ WARNING:** This product can expose you to Di(2-ethylhexyl)phthalate (DEHP), which is known to the State of California to cause cancer and birth defects or other reproductive harm. For more information go to [www.P65Warnings.ca.gov](http://www.P65Warnings.ca.gov).
- <sup>28</sup> **⚠️ WARNING:** This product can expose you to Ethylbenzene, which is known to the State of California to cause cancer, and Toluene, which is known to the State of California to cause birth defects or other reproductive harm. For more information go to [www.P65Warnings.ca.gov](http://www.P65Warnings.ca.gov).
- <sup>29</sup> **⚠️ WARNING:** This product can expose you to Ethylene Glycol, which is known to the State of California to cause birth defects or other reproductive harm. For more information go to [www.P65Warnings.ca.gov](http://www.P65Warnings.ca.gov).
- <sup>31</sup> **⚠️ WARNING:** This product can expose you to Benzene and Lead, which are known to the State of California to cause cancer and birth defects or other reproductive harm. For more information go to [www.P65Warnings.ca.gov](http://www.P65Warnings.ca.gov).
- <sup>32</sup> **⚠️ WARNING:** This product can expose you to Tetrachloroethylene, which is known to the State of California to cause cancer. For more information go to [www.P65Warnings.ca.gov](http://www.P65Warnings.ca.gov).
- <sup>33</sup> **⚠️ WARNING:** This product can expose you to Diethanolamine, which is known to the State of California to cause cancer, and 2-Methoxyethanol, which is known to the State of California to cause birth defects or other reproductive harm. For more information go to [www.P65Warnings.ca.gov](http://www.P65Warnings.ca.gov).
- <sup>35</sup> **⚠️ WARNING:** This product can expose you to chemicals including Crystalline Quartz Silica, Naphthalene and Ethylbenzene, which are known to the State of California to cause cancer. For more information go to [www.P65Warnings.ca.gov](http://www.P65Warnings.ca.gov).
- <sup>36</sup> **⚠️ WARNING:** This product can expose you to chemicals including Crystalline Quartz Silica and Naphthalene, which are known to the State of California to cause cancer. For more information go to [www.P65Warnings.ca.gov](http://www.P65Warnings.ca.gov).
- <sup>37</sup> **⚠️ WARNING:** This product can expose you to chemicals such as lead, which is known to the State of California to cause cancer, birth defects or other reproductive harm. For more information go to [www.P65Warnings.ca.gov](http://www.P65Warnings.ca.gov).
- <sup>38</sup> **⚠️ WARNING:** This product can expose you to chemicals such as naphthalene, which is known to the State of California to cause cancer, and chemicals such as toluene, which is known to the State of California to cause birth defects or other reproductive harm. For more information go to [www.P65Warnings.ca.gov](http://www.P65Warnings.ca.gov).

TO ORDER: 1-800-777-7094 MONDAY – FRIDAY 7 A.M. – 7 P.M. • [AMSOIL.COM](http://AMSOIL.COM)

Free shipping on all orders of \$100 (\$130 CAN.) or more.

Orders below \$100 (\$130 Can.) pay a flat shipping rate of \$9.99 (\$12.99 Can.).





CHANGE SERVICE REQUESTED

Published 4 times annually

PRSR STD  
US POSTAGE  
PAID  
AMSOIL

ISO 9001/ISO 14001 REGISTERED



WE HONOR



(Discover in U.S. only)

Motorcycle season is right around the corner. Be sure your bike is protected and ready to go with AMSOIL synthetic motorcycle oils and V-Twin Oil Change Kits. AMSOIL.com



AMSOIL INC., 925 Tower Ave., Superior, WI 54880 • 715-392-7101 • Printed in the USA  
© 2024, AMSOIL INC. All rights reserved. The AMSOIL logo is a registered trademark of AMSOIL INC.

AMSOIL.com

Spring 2024

# SPECIALIZED LUBRICANTS ENGINEERED FOR WHAT YOU DRIVE AND HOW YOU DRIVE

V-twins, hybrids, lawn mowers, race cars – whatever you drive, no two engines function exactly the same way. Getting the best performance and longest life out of your vehicles and equipment requires specialized lubricants.

AMSOIL products are engineered to deliver targeted, application-specific benefits so you can extract maximum performance and life from your equipment.



ORDER AT  
**AMSOIL.com/AMSOIL.ca**